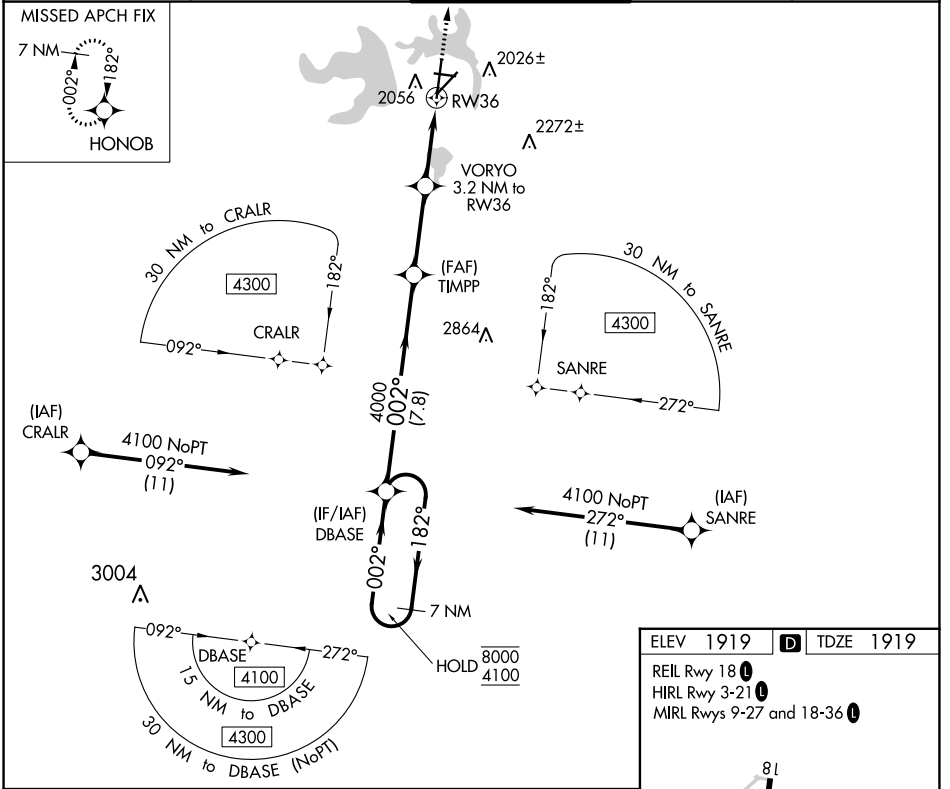


APP CRS	Rwy ldg	<b>7152</b>
<b>002°</b>	TDZE	<b>1919</b>
	Apt Elev	<b>1919</b>

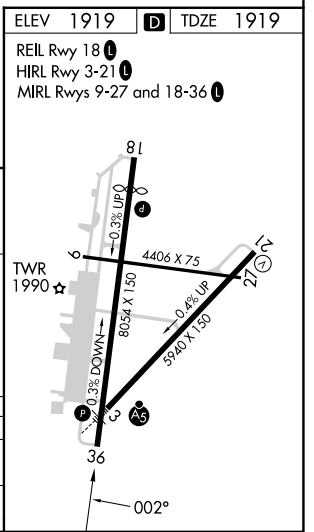
# RNAV (GPS) RWY 36

SAN ANGELO RGNL/MATHIS FLD (SJT)

RNP APCH - GPS.		MISSED APPROACH: Climb to 4100 direct HONOB and hold.				
<p><b>▼</b> Circling NA for Cat E west of Rwy 18-36.  <b>▲</b> Rwy 36 helicopter visibility reduction below 3/4 SM NA.</p>		<b>ATIS</b> <b>128.45 319.0</b>	<b>SAN ANGELO APP CON *</b> <b>125.35 354.1</b>	<b>MATHIS TOWER *</b> <b>118.3 (CTAF) 284.7</b>	<b>GND CON</b> <b>121.9 348.6</b>	<b>UNICOM</b> <b>122.95</b>



7 NM Holding Pattern	DBASE	TIMPP	VORYO	RW36	
	8000 ← 182°	4000	3.00° TCH 48	3.2 NM	2.1 NM
	4100 → 002°			1.1 NM	
CATEGORY	A	B	C	D	E
LNAV MDA	2320-1	401 (500-1)	2320-1 1/8	401 (500-1 1/8)	
<b>C</b> CIRCLING	2360-1 441 (500-1)	2380-1 461 (500-1)	2500-1 1/2 581 (600-1 1/2)	2700-2 1/2 781 (800-2 1/2)	2700-2 3/4 781 (800-2 3/4)



SC-3, 03 OCT 2024 to 31 OCT 2024

SC-3, 03 OCT 2024 to 31 OCT 2024