

(MARC'S, QERVO1) 25JAN24

QERVO ONE ARRIVAL (RNAV) Transition Routes

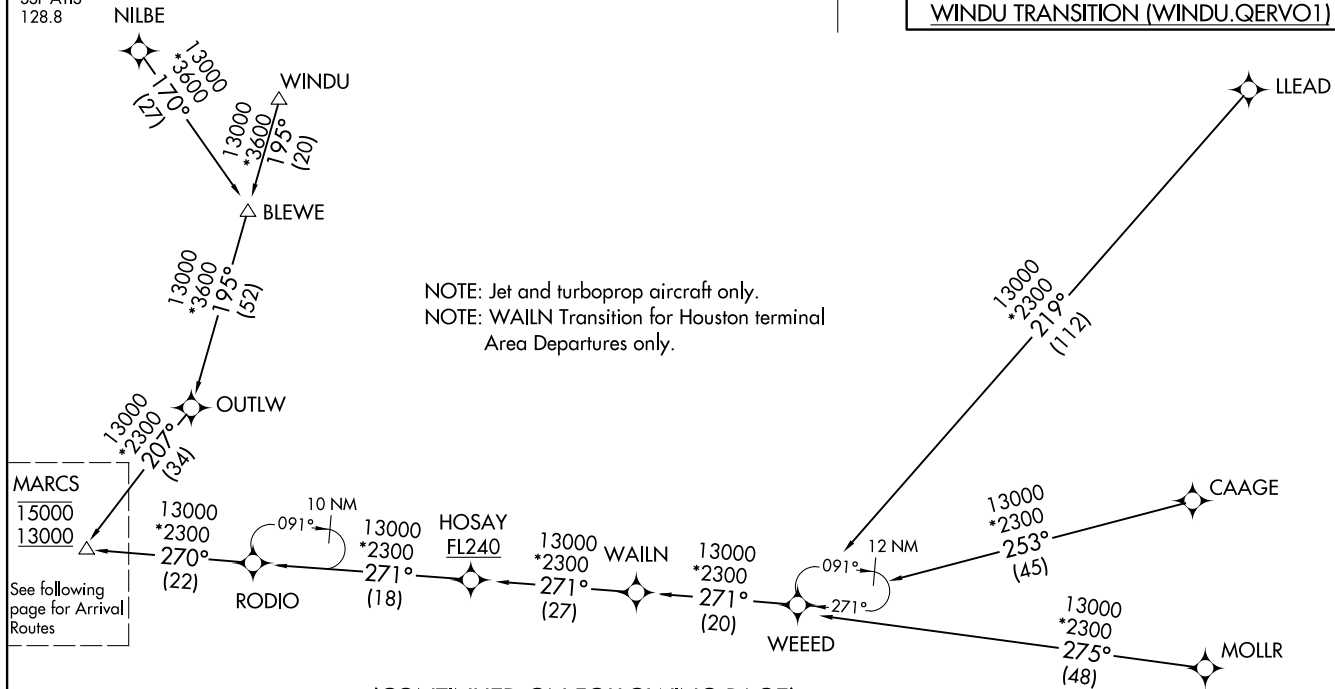
SAN ANTONIO, TEXAS

SAN ANTONIO APP CON  
 127.1 269.1  
 BAZ ATIS  
 119.325  
 KRND ATIS \*  
 290.525  
 KSKF ATIS  
 120.45 273.5  
 SAT D-ATIS  
 118.9  
 SSF ATIS  
 128.8

RNAV 1-DME/DME/IRU or GPS.  
 RADAR required.



BLEWE TRANSITION (BLEWE.QERVO1)  
 CAAGE TRANSITION (CAAGE.QERVO1)  
 LLEAD TRANSITION (LLEAD.QERVO1)  
 MOLLR TRANSITION (MOLLR.QERVO1)  
 NILBE TRANSITION (NILBE.QERVO1)  
 WAILN TRANSITION (WAILN.QERVO1)  
 WINDU TRANSITION (WINDU.QERVO1)



NOTE: Jet and turboprop aircraft only.  
 NOTE: WAILN Transition for Houston terminal  
 Area Departures only.

MARC'S  
 15000  
 13000  
 See following  
 page for Arrival  
 Routes

NOTE: Chart not to scale.

(CONTINUED ON FOLLOWING PAGE)

(MARC'S, QERVO1) 24025

AL-369 (FAA)  
 QERVO ONE ARRIVAL (RNAV) Transition Routes

SAN ANTONIO, TEXAS

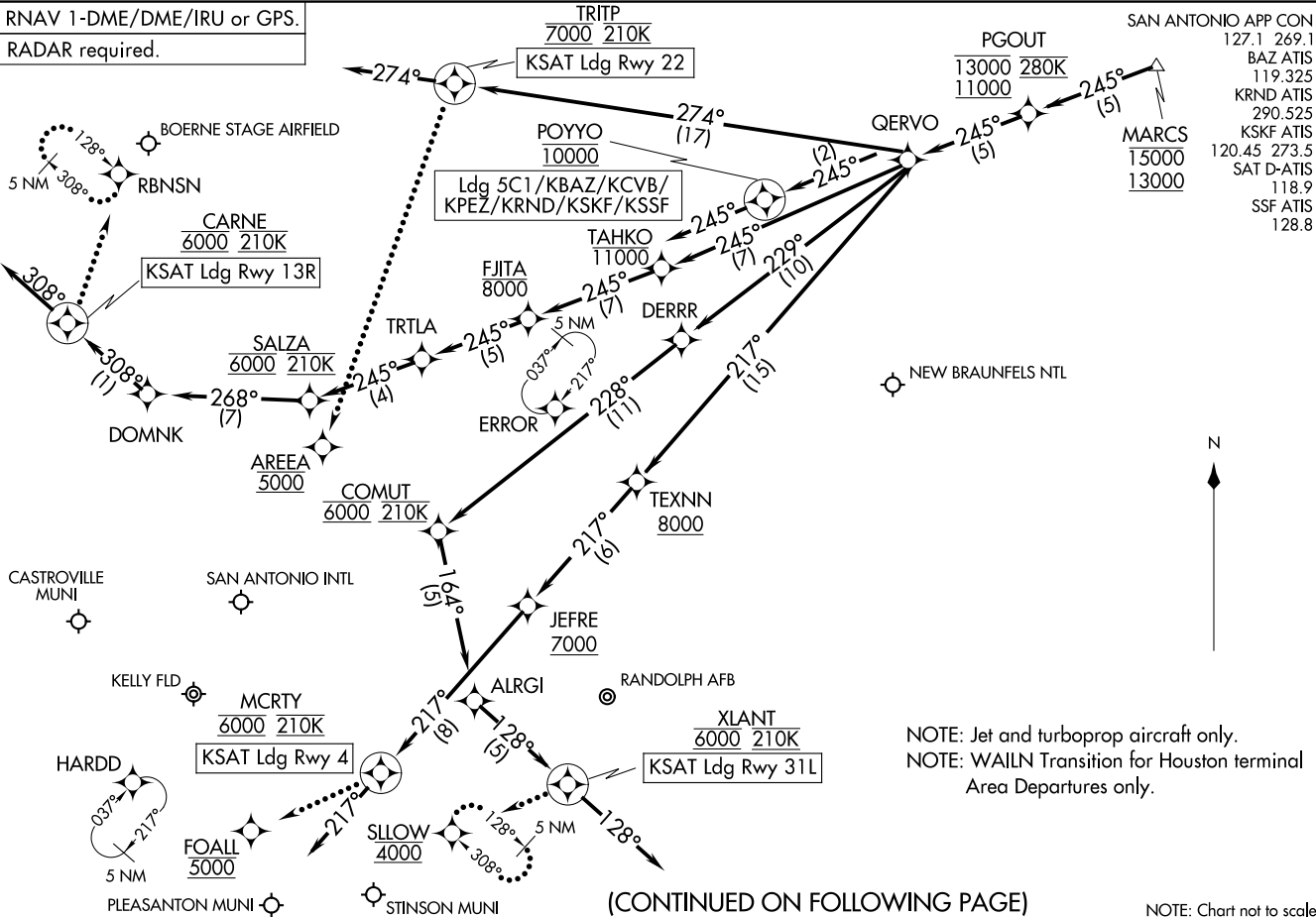
(MARCS, QERV01) 25JAN24

QERV0 ONE ARRIVAL (RNAV) Arrival Routes

SAN ANTONIO, TEXAS

RNAV 1-DME/DME/IRU or GPS.

**RADAR required.**



**SAN ANTONIO APP CON**  
127.1 269.1  
BAZ ATIS 119.325  
KRND ATIS 290.525  
KSKF ATIS 120.45 273.5  
SAT D-ATIS 118.9  
SSF ATIS 128.8

**MARCS**  
15000  
13000

NOTE: Jet and turboprop aircraft only.  
NOTE: WAILN Transition for Houston terminal Area Departures only.

NOTE: Chart not to scale.

(CONTINUED ON FOLLOWING PAGE)

(MARCS, QERV01) 24025  
AL-369 (FAA)

SAN ANTONIO, TEXAS

ARRIVAL ROUTE DESCRIPTION

SAN ANTONIO INTL (KSAT): From MARCS on track 245° to cross PGOUT between 11000 and 13000 and at 280K, then on track 245° to QERVO.

LANDING KSAT RUNWAY 4: From QERVO on track 217° to cross TEXNN at or above 8000, then on track 217° to cross JEFRE at or above 7000, then on track 217° to cross MCRTY at 6000 and at 210K, then on track 217°. Expect RADAR vectors to final approach course.

LANDING KSAT RUNWAY 13R: From QERVO on track 245° to cross TAHKO at or below 11000, then on track 245° to cross FJITA at or below 8000, then on track 245° to TRTLA, then on track 246° to cross SALZA at 6000 and at 210K, then on track 268° to DOMNK, then on track 308° to cross CARNE at 6000 and at 210K, then on track 308°. Expect RADAR vectors to final approach course.

LANDING KSAT RUNWAY 22: From QERVO on track 274° to cross TRITP at 7000 and at 210K, then on track 274°. Expect RADAR vectors to final approach course.

LANDING KSAT RUNWAY 31L: From QERVO on track 229° to DERRR, then on track 228° to cross COMUT at 6000 and at 210K, then on track 164° to ALRGI, then on track 128° to cross XLANT at 6000 and at 210K, then on track 128°. Expect RADAR vectors to final approach course.

LANDING KSKF/KBAZ/KCVB/KSSF/KPEZ/5C1/KRND: From MARCS on track 245° to cross PGOUT between 11000 and 13000 and at 280K, then on track 245° to QERVO, then on track 245° to cross POYYO at 10000, then on track 245°. Expect RADAR vectors to final approach course.

LOST COMMUNICATIONS:

KSAT RUNWAY 4: After MCRTY, proceed to FOALL at 5000, then on ILS or LOC RWY 4 or RNAV (GPS) Y RWY 4 approach.

KSAT RUNWAY 13R: After CARNE, proceed to RBNSN and hold.

KSAT RUNWAY 22: After TRITP proceed to AREEA at 5000, then on RNAV (GPS) Y RWY 22 approach.

KSAT RUNWAY 31L: After XLANT, proceed to SLOW at 4000 and hold.