

APP CRS	Rwy Idg	4198
064°	TDZE	178
	Apt Elev	179

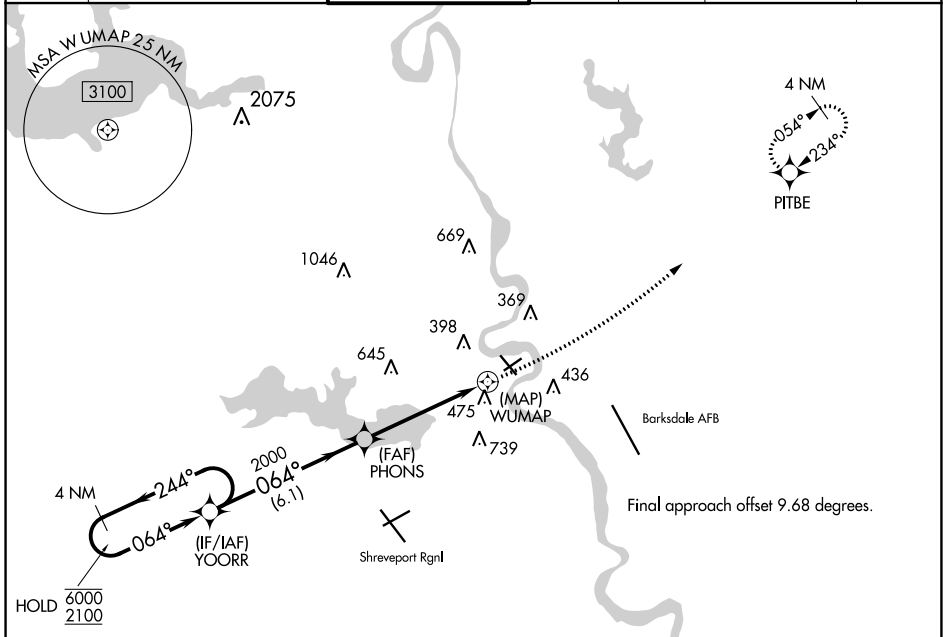
RNAV (GPS) RWY 5

SHREVEPORT DOWNTOWN (DTN)

RNP APCH.
 ▼ Circling Rwy 23, 32 NA at night. Rwy 5 helicopter visibility reduction below 1 SM NA. Straight-in minimums NA at night.
 ▲

MISSED APPROACH: Climbing left turn to 2000 direct PITBE and hold.

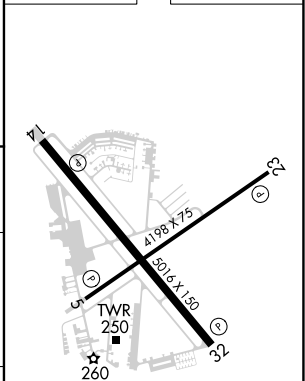
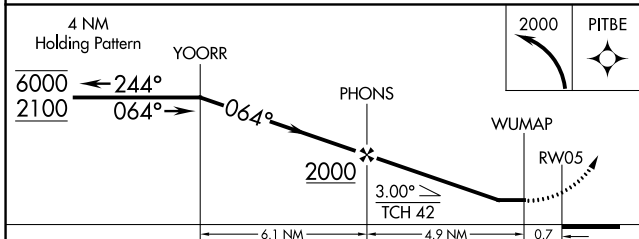
ASOS	SHREVEPORT APP CON	DOWNTOWN TOWER *	GND CON	CLNC DEL	CLNC DEL	UNICOM
118.525	119.9 335.55 (153°-319°)	120.225 (CTAF) 284.6	121.65	121.65	119.9 (When twr closed)	122.95
	123.75 360.725 (320°-152°)					



SC-4, 03 OCT 2024 to 31 OCT 2024

SC-4, 03 OCT 2024 to 31 OCT 2024

ELEV 179	TDZE 178
----------	----------



CATEGORY	A	B	C	D
LNVA MDA	720-1	542 (600-1)		NA
CIRCLING	800-1 621 (700-1)	920-1 741 (800-1)		NA

MIRL Rwy 5-23
 HIRL Rwy 14-32
 REIL Rws 5, 14, 23, and 32