

HI-TACAN RWY 13

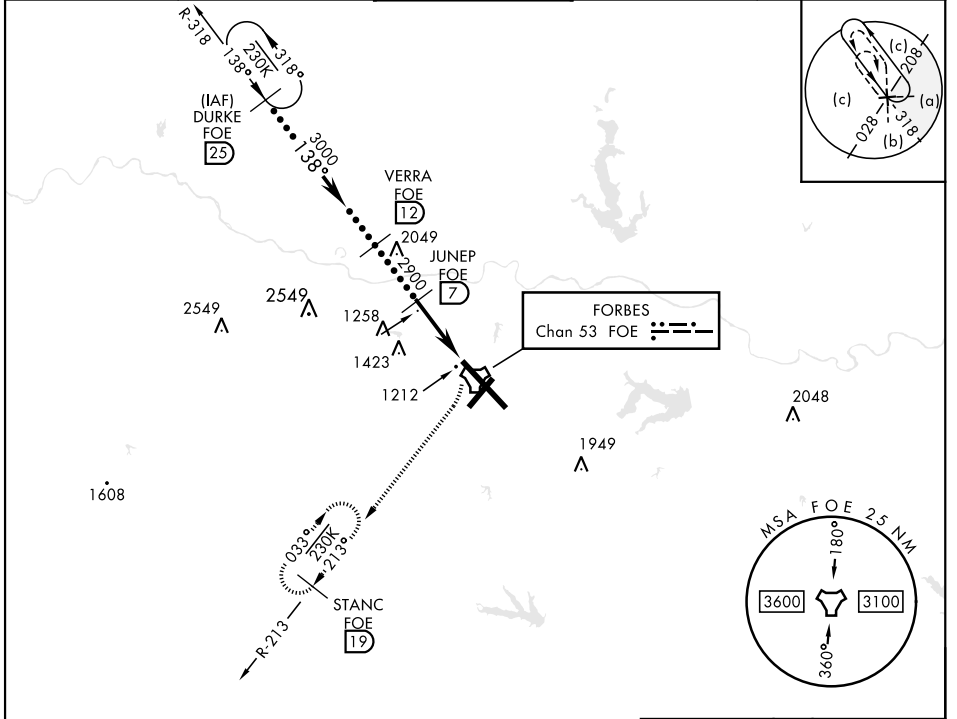
TACAN Chan 53	FOE	APCH CRS 138°	Rwy ldg 12,803 TDZE 1066 Arprt Elev 1078
----------------------	-----	----------------------	---

[USAF]

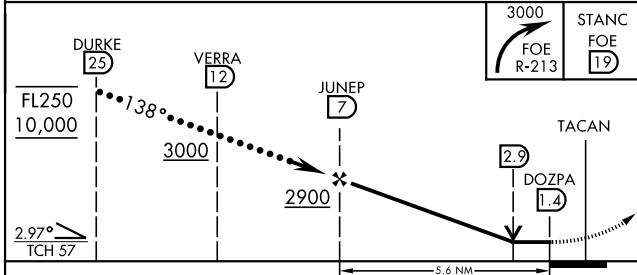
TOPEKA RGNL (KFOE)

V A NA	MALSF A4	MISSED APPROACH: Climbing right turn to 3000 via FOE TACAN R-213 to STANC/19 DME and hold.
-------------------------	---------------------------	--

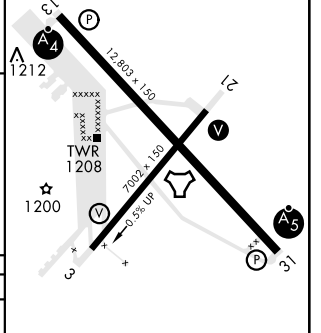
ATIS 128.25	KANSAS CITY CENTER 123.8 343.7	FORBES TOWER ★ 120.8 (CTAF) 340.2	GND CON 118.425 275.8	UNICOM 122.95
--------------------	---------------------------------------	--	------------------------------	----------------------



EMERG SAFE ALT 100 NM 3600



ELEV 1078	D	TDZE 1066
Rwy 3 ldg 7001'		
Rwy 21 ldg 7001'		



CATEGORY	C	D	E
S-13	1600-1½	534 (600-1½)	
C CIRCLING	1600-1½ 522 (600-1½)	1700-2 622 (700-2)	1720-2¼ 642 (700-2¼)

MRL Rwy 3-21
REIL Rwy 3, 13, and 21
HIRL Rwy 13-31

HI-TACAN RWY 13

NC-2, 03 OCT 2024 to 31 OCT 2024

NC-2, 03 OCT 2024 to 31 OCT 2024