

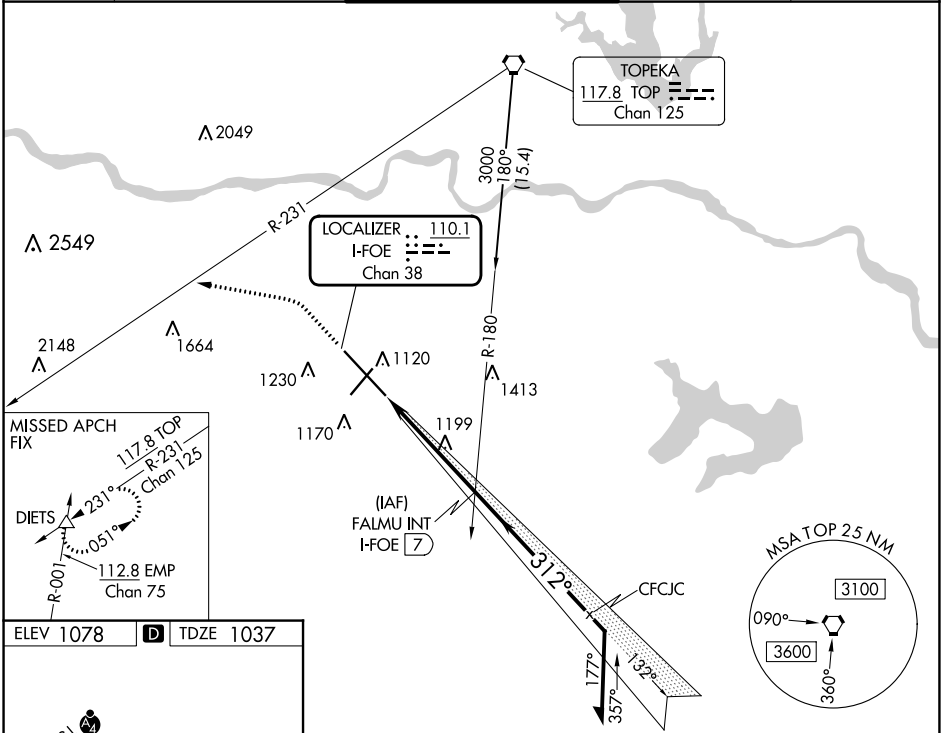
LOC/DME I-FOE 110.1 Chan 38	APP CRS 312°	Rwy Idg 12803 TDZE 1037 Apt Elev 1078
---	------------------------	--

ILS or LOC RWY 31

TOPEKA RGNL (FOE)

⚠ For inop ALS, increase S-ILS Cat E visibility to RVR 4000 and S-LOC Cat E visibility to 1 1/4 SM. ⚠ *RVR 1800 authorized with use of FD or AP or HUD to DA.		MALSR 	MISSED APPROACH: Climb to 1900 then climbing left turn to 3700 on heading 275° and on TOP VORTAC R-231 to DIETS INT and hold.
--	--	-----------	--

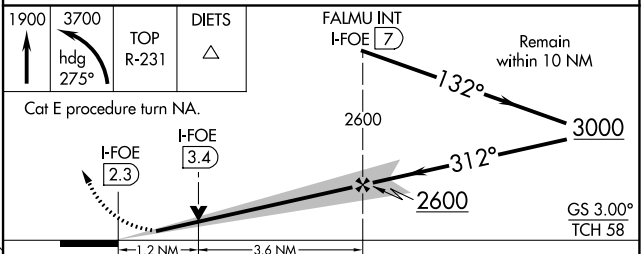
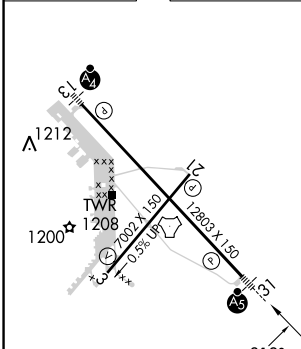
ATIS 128.25	KANSAS CITY CENTER 123.8 343.7	FORBES TOWER* 120.8 (CTAF) 0 340.2	GND CON 118.425 275.8	UNICOM 122.95
-----------------------	--	--	---------------------------------	-------------------------



NC-2, 03 OCT 2024 to 31 OCT 2024

NC-2, 03 OCT 2024 to 31 OCT 2024

ELEV 1078	D TDZE 1037
-----------	--------------------



REIL Rws 3, 13 and 21	MIRL Rwy 3-21	HIRL Rwy 13-31	FAF to MAP 4.7 NM		
Knots	60	90	120	150	180
Min:Sec	4:42	3:08	2:21	1:53	1:34
C CIRCLING	1520-1 442 (500-1)	1580-1 502 (600-1)	1580-1 1/2 502 (600-1 1/2)	1700-2 622 (700-2)	1720-2 1/4 642 (700-2 1/4)