

WAAS CH 50344 W36B	APP CRS 360°	Rwy Idg TDZE Apt Elev	5101 678 678
--	------------------------	-----------------------------	---

RNAV (GPS) RWY 36L

TULSA INTL (TUL)

RNP APCH - GPS.

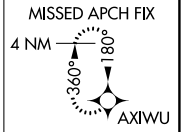
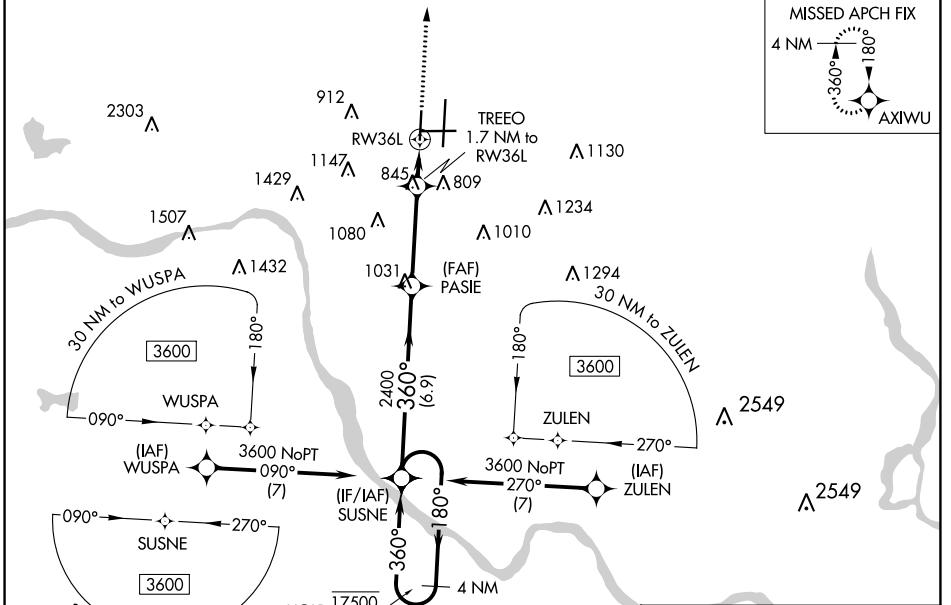
▼ Use of FD or AP required during simultaneous operations. For uncompensated Baro-VNAV systems, LNAV/VNAV NA below -14°C or above 54°C. Simultaneous approach authorized.

▲ LNAV procedure NA during simultaneous operations.

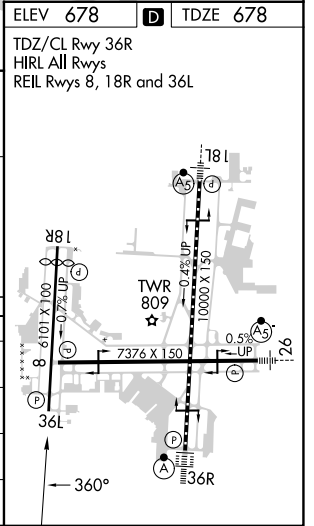
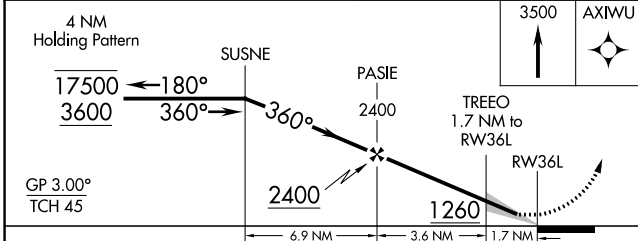
ASR

MISSED APPROACH:
Climb to 3500 direct
AXIWU and hold.

D-ATIS 124.9 377.2	TULSA APP CON 124.0 338.3	TULSA TOWER 121.2 310.8 (Rwys 18L-36R, 8-26) 118.7 257.8 (Rwy 18R-36L)	GND CON 121.9 348.6	CLNC DEL 134.05 284.7
------------------------------	-------------------------------------	--	-------------------------------	---------------------------------



ELEV 678	D TDZE 678
TDZ/CL Rwy 36R	
HIRL All Rwys	
REIL Rwys 8, 18R and 36L	



CATEGORY	A	B	C	D
LPV DA		928-3/4	250 (300-3/4)	
LNAV/VNAV DA		1088-1 1/8	410 (500-1 1/8)	
LNAV MDA	1120-1	442 (500-1)	1120-1 3/8	442 (500-1 3/8)
C CIRCLING	1120-1 442 (500-1)	1160-1 482 (500-1)	1500-2 1/2 822 (900-2 1/2)	1520-2 3/4 842 (900-2 3/4)

SC-1, 03 OCT 2024 to 31 OCT 2024

SC-1, 03 OCT 2024 to 31 OCT 2024