

APP CRS	Rwy Idg	N/A
078°	TDZE	N/A
	Apt Elev	4237

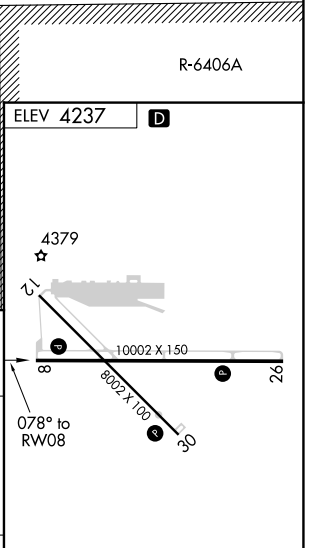
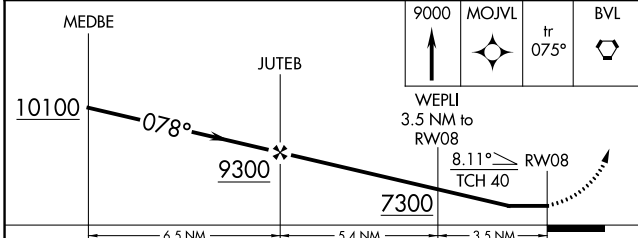
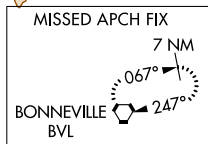
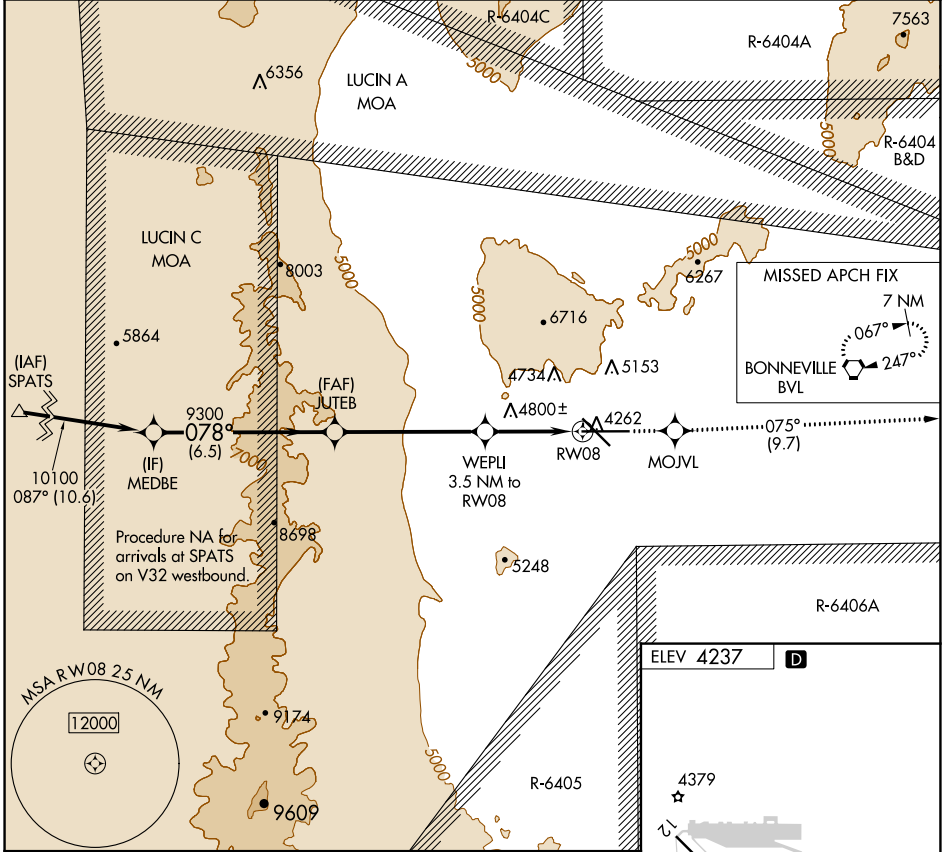
RNAV (GPS)-C

WENDOVER (ENV)

⚠ Circling NA north of Rwy 8-26. DME/DME RNP-0.3 NA.

⚠ MISSED APPROACH: Climb to 9000 direct MOJVL and on track 075° to BVL VORTAC and hold, continue climb-in-hold to 9000.

AWOS-3PT 120.55	SALT LAKE CENTER 128.55 269.175	UNICOM 122.8 (CTAF)
---------------------------	---	-------------------------------



CATEGORY	A	B	C	D	E
CIRCLING	6020-1¼ 1783 (1800-1¼)	6020-1½ 1783 (1800-1½)	6020-3	1783 (1800-3)	

REIL Rwy 8, 12, 26 and 30
MIRL Rwy 8-26 and 12-30

SW-4, 03 OCT 2024 to 31 OCT 2024

SW-4, 03 OCT 2024 to 31 OCT 2024