


WAAS CH <b>65815</b> <b>W01A</b>	APP CRS <b>015°</b>	Rwy Idg <b>7012</b> TDZE <b>76</b> Apt Elev <b>80</b>
--	------------------------	---

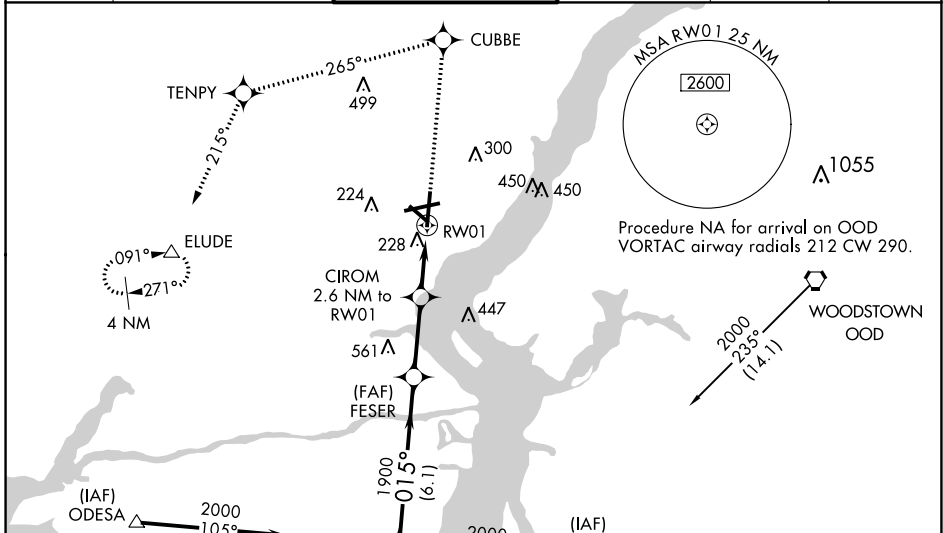
# RNAV (GPS) RWY 1

NEW CASTLE (ILG)

**⚠** Inoperative table does not apply to LPV all Cats and LNAV Cats A and B. Baro-VNAV NA when using Philadelphia Intl altimeter setting. For uncompensated Baro-VNAV systems, LNAV/VNAV NA below -15°C (5°F) or above 49°C (120°F). DME/DME RNP-0.3 NA. Visibility reduction by helicopters NA. When local altimeter setting not received, use Philadelphia Intl altimeter setting: increase LPV DA to 380, LNAV/VNAV DA to 579, and all MDAs 60 feet; increase LNAV/VNAV all Cats visibility to RVR 6000 and Circling Cat D visibility ¼ SM. For inoperative MALSR, increase LNAV Cats C and D visibility ¼ mile. For inoperative MALSR, when using Philadelphia Intl altimeter setting, increase LNAV visibility Cat C ¼ mile.

**MALSR**  
 MISSED APPROACH: Climb to 2000 direct CUBBE and left turn via track 265° to TENPY and via track 214° to ELUDE and hold.

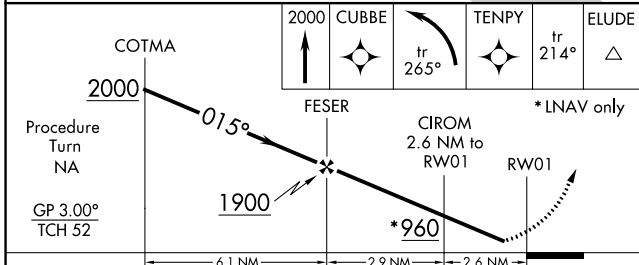
ATIS <b>123.95</b>	PHILADELPHIA APP CON <b>118.35 323.1</b>	WILMINGTON TOWER* <b>126.0</b> (CTAF) <b>352.05</b>	GND CON <b>121.7 275.8</b>	CLNC DEL <b>119.95</b>	UNICOM <b>122.95</b>
-----------------------	---	--	-------------------------------	---------------------------	-------------------------



NE-3, 03 OCT 2024 to 31 OCT 2024

NE-3, 03 OCT 2024 to 31 OCT 2024

ELEV <b>80</b>	<b>D</b> TDZE <b>76</b>
REIL Rwy 9, 19 and 27 <b>Ⓛ</b>	
HIRL Rwy 1-19 and 9-27 <b>Ⓛ</b>	
MIRL Rwy 14-32 <b>Ⓛ</b>	



61	7015 X 150	7012 X 150	4602 X 150	32	27	TWR 223
----	------------	------------	------------	----	----	---------

CATEGORY	A	B	C	D
LPV DA		326/50	250 (300-1)	
LNAV/VNAV DA		525/50	449 (500-1)	
LNAV MDA		480/50	404 (400-1)	
CIRCLING	540-1 460 (500-1)	560-1 480 (500-1)	600-1½ 520 (600-1½)	800-2¼ 720 (800-2¼)