

WAAS CH 49015 W09A	APP CRS 088°	Rwy Idg 7000 TDZE 80 Apt Elev 80
--	------------------------	---

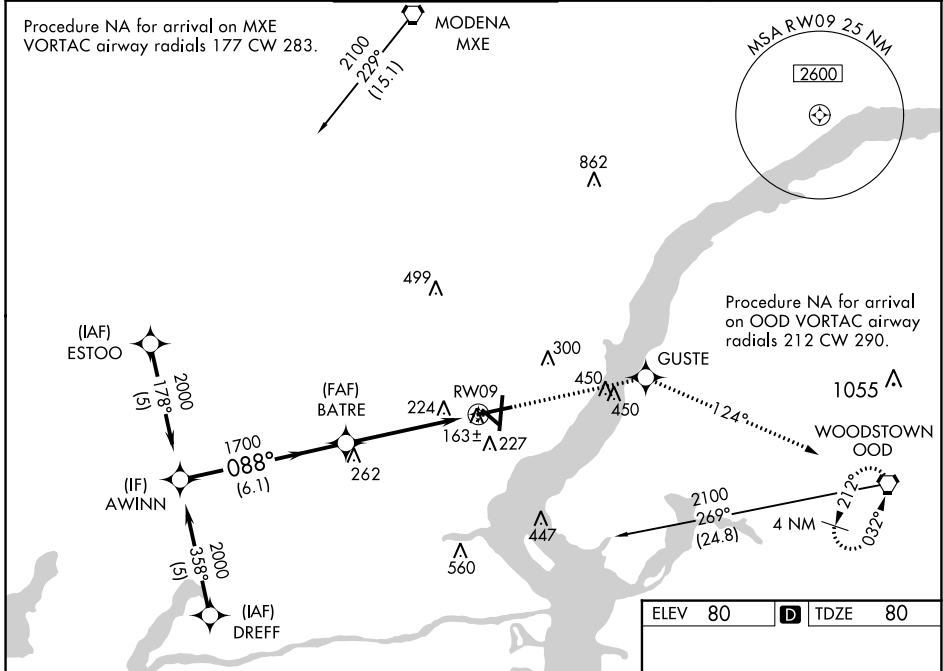
RNAV (GPS) RWY 9

NEW CASTLE (ILG)

⚠ For uncompensated Baro-VNAV systems, LNAV/VNAV NA below -15°C (5°F) or above 48°C (118°F). DME/DME RNP-0.3 NA. Helicopter visibility reduction below 3/4 mile NA. VDP and Baro-VNAV NA when using Philadelphia Intl altimeter setting. When local altimeter setting not received, use Philadelphia Intl altimeter setting: increase LPV DA to 448, LNAV/VNAV DA to 568, and all MDAs 60 feet; increase LPV all Cats and Circling Cat D visibility 1/4 SM and LNAV/VNAV all Cats visibility 1/2 SM.

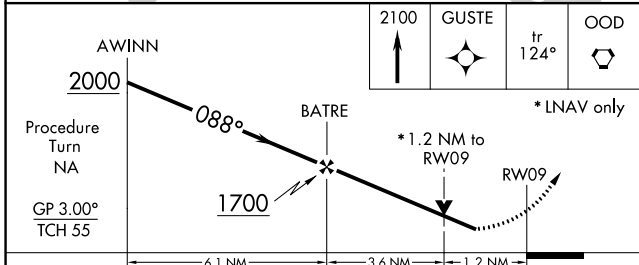
MISSED APPROACH:
Climb to 2100 direct GUSTE and via track 124° to OOD VORTAC and hold.

ATIS 123.95	PHILADELPHIA APP CON 118.35 323.1	WILMINGTON TOWER ★ 126.0 (CTAF) 352.05	GND CON 121.7 275.8	CLNC DEL 119.95	UNICOM 122.95
-----------------------	---	---	-------------------------------	---------------------------	-------------------------



NE-3, 03 OCT 2024 to 31 OCT 2024

NE-3, 03 OCT 2024 to 31 OCT 2024



ELEV 80	D TDZE 80
---------	------------------

CATEGORY	A	B	C	D
LPV DA	394-1 314 (400-1)			
LNAV/ VNAV	521-1½ 441 (500-1½)			
LNAV MDA	520-1 440 (500-1)		520-1¼ 440 (500-1½)	
CIRCLING	540-1 460 (500-1)	560-1 480 (500-1)	600-1½ 520 (600-1½)	800-2¼ 720 (800-2¼)

