

VORTAC DQO <b>114.0</b> Chan <b>87</b>	APP CRS <b>261°</b>	Rwy Idg <b>7000</b> TDZE <b>72</b> Apt Elev <b>80</b>
----------------------------------------------	------------------------	-------------------------------------------------------------

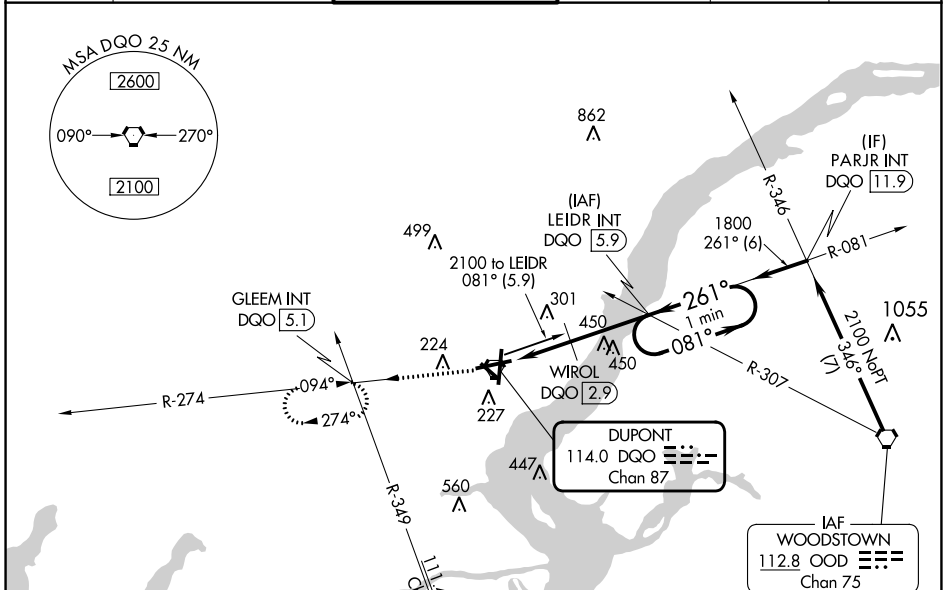
# VOR RWY 27

NEW CASTLE (ILG)

**⚠** Helicopter visibility reduction below 3/4 SM NA. When local altimeter setting not received, use Philadelphia Intl altimeter setting and increase all MDAs 60 feet; increase S-27 Cat B and Circling Cat C/D visibility 1/4 SM and S-27 Cat C/D visibility 1/2 SM; WIROL fix minimums S-27 increase Cat C/D and Circling Cat D visibility 1/4 SM.

MISSED APPROACH: Climb to 2000 on DQO VORTAC R-274 to GLEEM INT/DQO 5.1 DME and hold.

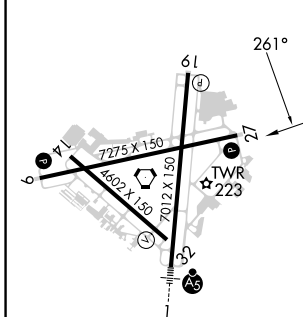
ATIS <b>123.95</b>	PHILADELPHIA APP CON <b>118.35 323.1</b>	WILMINGTON TOWER * <b>126.00 (CTAF) 352.05</b>	GND CON <b>121.7 275.8</b>	CLNC DEL <b>119.95</b>	UNICOM <b>122.95</b>
-----------------------	---------------------------------------------	---------------------------------------------------	-------------------------------	---------------------------	-------------------------



NE-3, 03 OCT 2024 to 31 OCT 2024

NE-3, 03 OCT 2024 to 31 OCT 2024

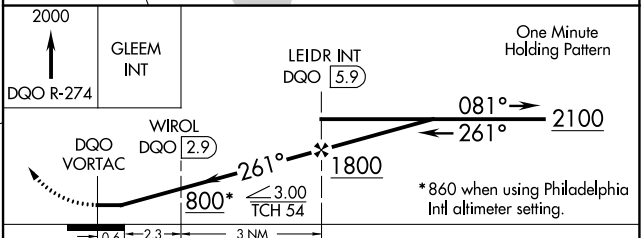
ELEV 80	<b>D</b>	TDZE 72
---------	----------	---------



REIL Rwy 9, 19 and 27 **Ⓛ**  
 HIRL Rwy 1-19 and 9-27 **Ⓛ**  
 MIRL Rwy 14-32 **Ⓛ**

FAF to MAP 5.9 NM

Knots	60	90	120	150	180
Min:Sec	5:54	3:56	2:57	2:22	1:58



CATEGORY	A	B	C	D
S-27	800-1 728 (800-1)		800-2 728 (800-2)	
CIRCLING	800-1 720 (800-1)		800-2 720 (800-2)	800-2 1/4 720 (800-2 1/4)
WIROL FIX MINIMUMS (DME REQUIRED)				
S-27	560-1 488 (500-1)		560-1 3/8 488 (500-1 3/8)	
CIRCLING	560-1 480 (500-1)		600-1 1/2 520 (600-1 1/2)	800-2 1/4 720 (800-2 1/4)

\* 860 when using Philadelphia Intl altimeter setting.