

LOC I-GMX <b>111.55</b>	APP CRS <b>238°</b>	Rwy Idg <b>8016</b> TDZE <b>26</b> Apt Elev <b>32</b>
----------------------------	------------------------	---

# ILS Y RWY 24 (SA CAT I & II)

WILMINGTON INTL (ILM)

<p><b>▼</b> ADF required. SA CAT I: Requires specific OPSPEC, MSPEC, or LOA approval and use of HUD to DH. SA CAT II: Reduced lighting: requires specific OPSPEC, MSPEC, or LOA approval and use of autoland or HUD to touchdown. Procedure NA when tower closed.</p>	<p>MALSR</p>	<p>MISSED APPROACH: Climb to 500 then climbing right turn to 1800 direct WILZE LOM and hold.</p>
---	--------------	--

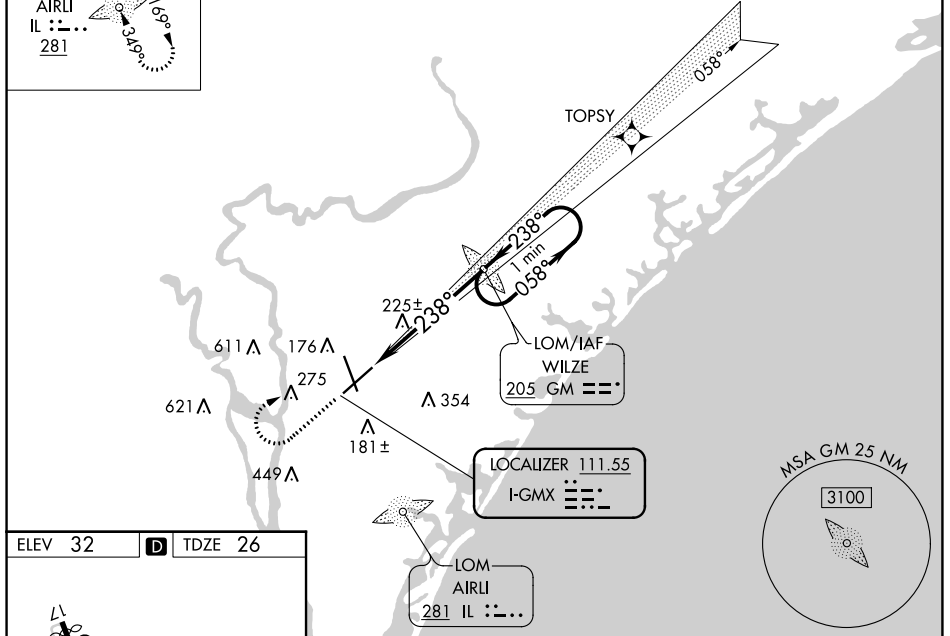
ATIS <b>124.975</b>	WILMINGTON APP CON ★ <b>118.25 284.65</b> (164°-343°) <b>135.75 317.425</b> (344°-163°)	WILMINGTON TOWER ★ <b>119.9</b> (CTAF) <b>239.3</b>	GND CON <b>121.9 348.6</b>	UNICOM <b>122.95</b>
------------------------	---	--	-------------------------------	-------------------------

ALTERNATE MISSED APCH FIX

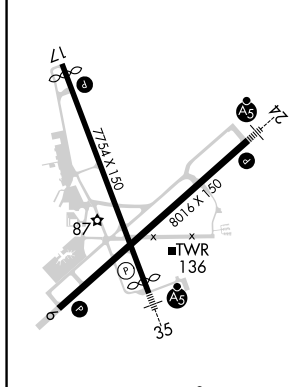
AIRLI  
IL : - . . .  
**281**

## RNAV 1-GPS or RADAR REQUIRED

1042 **△**



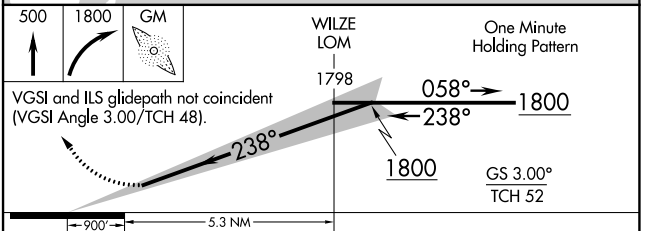
ELEV 32	<b>D</b>	TDZE 26
---------	----------	---------



HIRL Rwy 6-24 and 17-35 **①**  
REIL Rwy 6 and 17 **①**

FAF to MAP 5.3 NM

Knots	60	90	120	150	180
Min:Sec	5:18	3:32	2:39	2:07	1:46



CATEGORY	A	B	C	D
S-ILS 24	SA CAT I RA 151/14 150 DA 176			
S-ILS 24	SA CAT II RA 108/12 100 DA 126			

## SA CATEGORY I & II ILS SPECIAL AIRCREW & AIRCRAFT CERTIFICATION REQUIRED

SE-2, 03 OCT 2024 to 31 OCT 2024

SE-2, 03 OCT 2024 to 31 OCT 2024