

LOC I-GMX <b>111.55</b>	APP CRS <b>238°</b>	Rwy Idg <b>8016</b> TDZE <b>26</b> Apt Elev <b>32</b>
----------------------------	------------------------	---

# ILS Y or LOC RWY 24

WILMINGTON INTL (ILM)

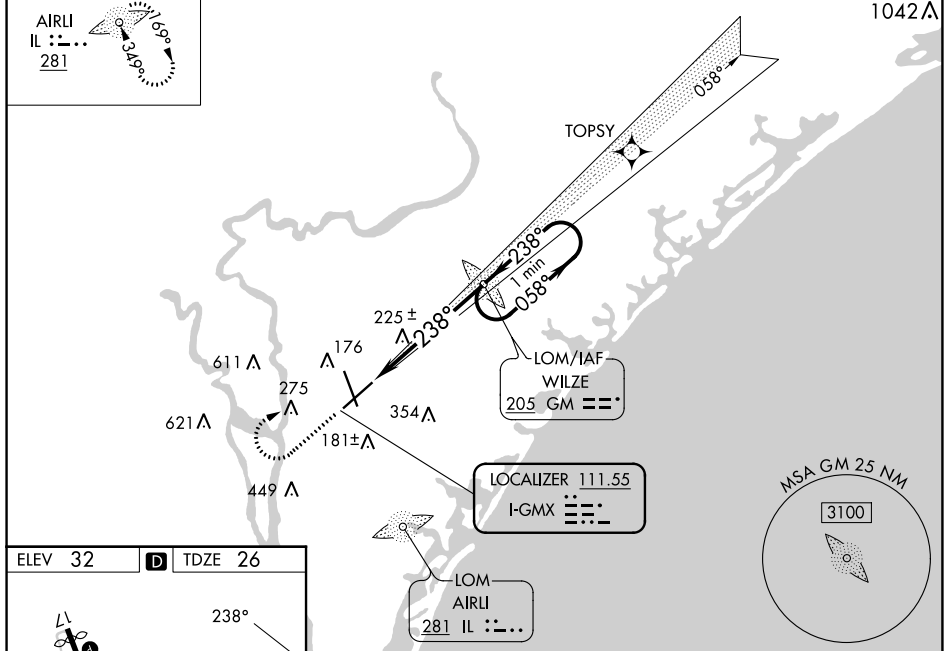
<p><b>**RVR 1800 authorized with use of FD or AP or HUD to DA. ADF required.</b></p>	<p>MALSR</p>	<p>MISSED APPROACH: Climb to 500 then climbing right turn to 1800 direct WILZE LOM and hold.</p>
--	--------------	--

<p>ATIS <b>124.975</b></p>	<p>WILMINGTON APP CON ★ <b>118.25 284.65</b> (164°-343°) <b>135.75 317.425</b> (344°-163°)</p>	<p>WILMINGTON TOWER ★ <b>119.9</b>(CTAF) <b>239.3</b></p>	<p>GND CON <b>121.9 348.6</b></p>	<p>UNICOM <b>122.95</b></p>
--------------------------------	--	---	---------------------------------------	---------------------------------

ALTERNATE MISSED APCH FIX

AIRLI  
IL :--..  
281

## RNAV 1-GPS or RADAR REQUIRED



ELEV 32	D	TDZE 26
---------	---	---------

HIRL Rwy 6-24 and 17-35

REIL Rwy 6 and 17

FAF to MAP 5.3 NM

Knots	60	90	120	150	180
Min:Sec	5:18	3:32	2:39	2:07	1:46

500	1800	GM
-----	------	----

WILZE LOM 1798

One Minute Holding Pattern

058° → 1800

← 238°

1800

GS 3.00° TCH 52

5.3 NM

VGSI and ILS glidepath not coincident (VGSI Angle 3.00/TCH 48).

CATEGORY	A	B	C	D
S-ILS 24**	226/24		200 (200-½)	
S-LOC 24	500/24	474 (500-½)	500/50	474 (500-1)
CIRCLING	560-1	528 (600-1)	720-2 688 (700-2)	920-3 888 (900-3)

SE-2, 03 OCT 2024 to 31 OCT 2024

SE-2, 03 OCT 2024 to 31 OCT 2024