

LOC/DME I-GNM <b>109.95</b> Chan <b>36 (Y)</b>	APP CRS <b>058°</b>	Rwy Idg <b>8016</b> TDZE <b>28</b> Apt Elev <b>32</b>
--	------------------------	---

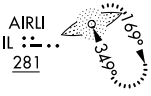
# ILS Y or LOC RWY 6

WILMINGTON INTL (ILM)

	ADF required. DME required.	MISSED APPROACH: Climb to 1800 direct WILZE LOM and hold.		
--	--------------------------------	--	--	--

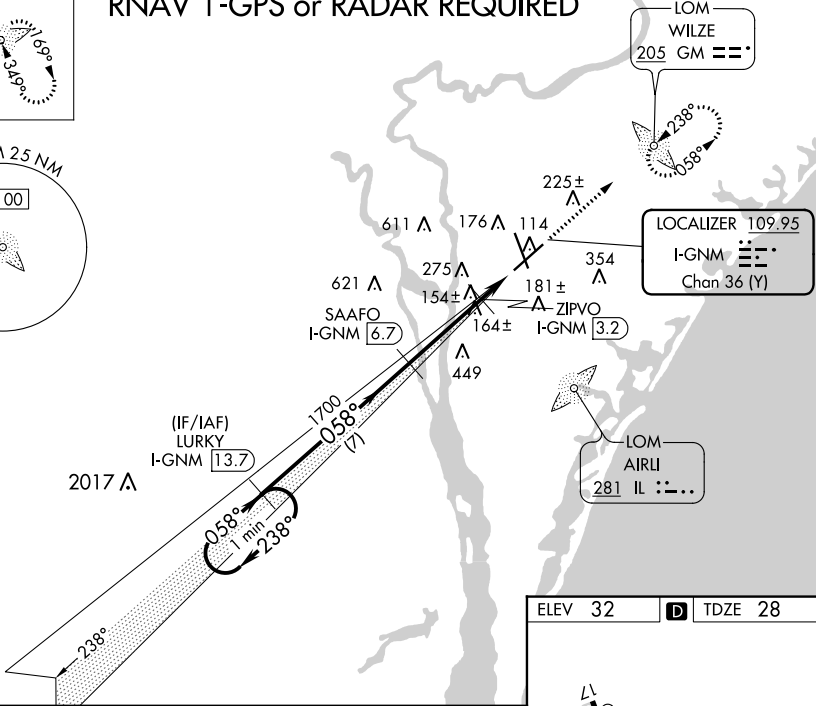
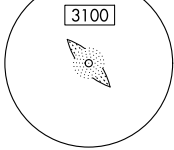
ATIS <b>124.975</b>	WILMINGTON APP CON ★ <b>118.25 284.65</b> (164°-343°) <b>135.75 317.425</b> (344°-163°)	WILMINGTON TOWER★ <b>119.9(CTAF) 239.3</b>	GND CON <b>121.9 348.6</b>	UNICOM <b>122.95</b>
------------------------	---	---	-------------------------------	-------------------------

ALTERNATE MISSED  
APCH FIX



## RNAV 1-GPS or RADAR REQUIRED

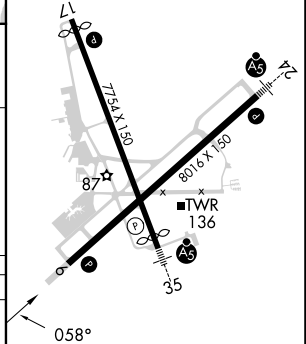
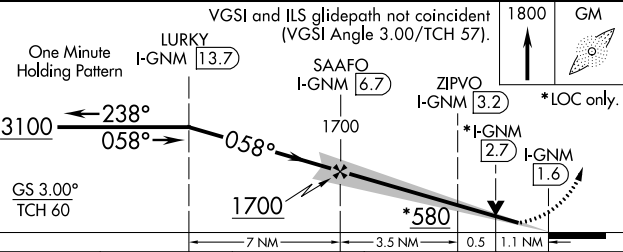
MSA GM 25 NM



SE-2, 03 OCT 2024 to 31 OCT 2024

SE-2, 03 OCT 2024 to 31 OCT 2024

ELEV 32		TDZE 28
---------	--	---------



CATEGORY	A	B	C	D
S-ILS 6	228/40		200 (200-¾)	
S-LOC 6	420/55 392 (400-1)		420/60 392 (400-1¼)	
CIRCLING	560-1 528 (600-1)		720-2 688 (700-2) 920-3 888 (900-3)	

HIRL Rwy 6-24 and 17-35  
REIL Rwy 6 and 17