

LOC/DME I-GNM <b>109.95</b> Chan 36 (Y)	APP CRS <b>058°</b>	Rwy Idg <b>8016</b> TDZE <b>28</b> Apt Elev <b>32</b>
---	------------------------	---

# ILS Z RWY 6

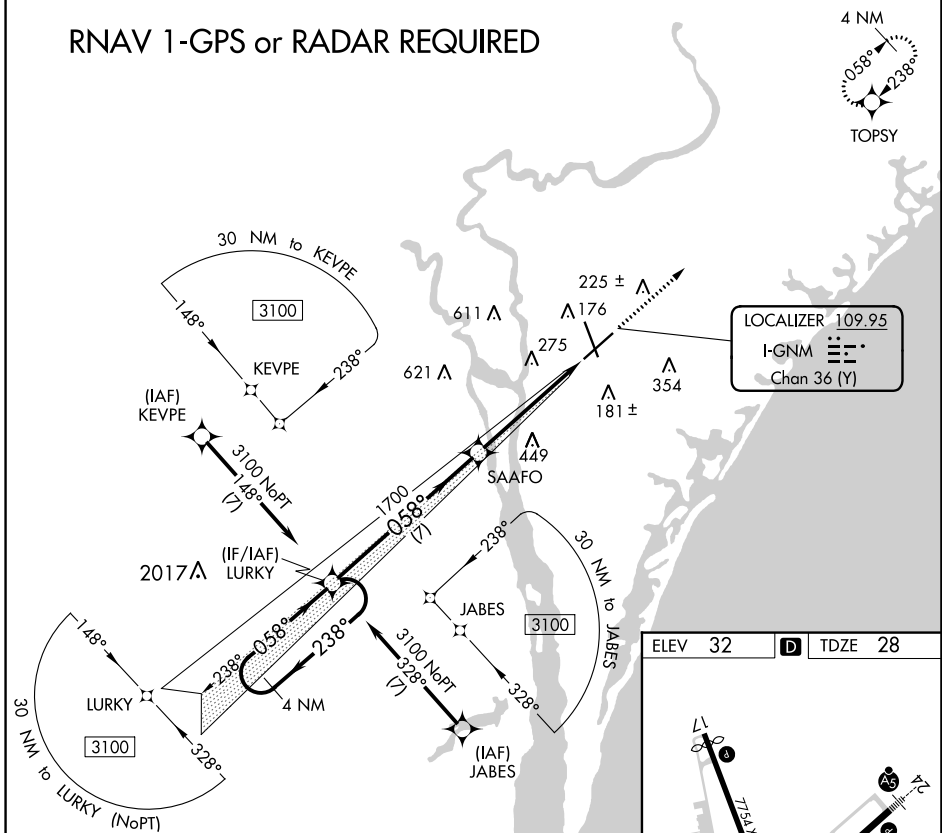
WILMINGTON INTL (ILM)

**RNAV 1-GPS required.**

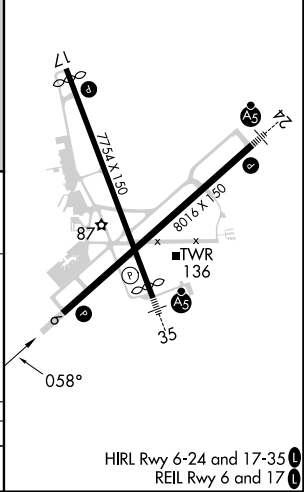
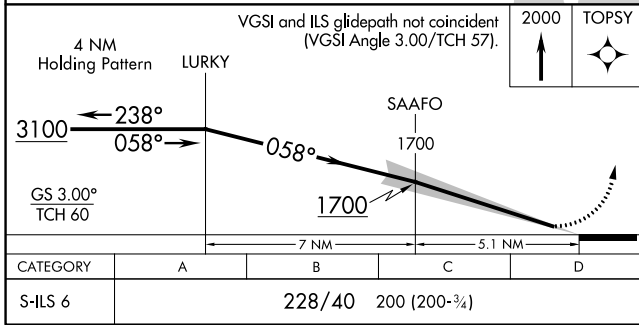
**MISSED APPROACH:** Climb to 2000 direct TOPSY and hold.

ATIS <b>124.975</b>	WILMINGTON APP CON * <b>118.25 284.65</b> (164°-343°) <b>135.75 317.425</b> (344°-163°)	WILMINGTON TOWER * <b>119.9</b> (CTAF) <b>239.3</b>	GND CON <b>121.9 348.6</b>	UNICOM <b>122.95</b>
------------------------	---	--	-------------------------------	-------------------------

## RNAV 1-GPS or RADAR REQUIRED



ELEV 32	D	TDZE 28
---------	---	---------



SE-2, 03 OCT 2024 to 31 OCT 2024

SE-2, 03 OCT 2024 to 31 OCT 2024