

WAAS CH 90499 W17A	APP CRS 169°	Rwy Idg 6604 TDZE 32 Apt Elev 32
--	------------------------	---

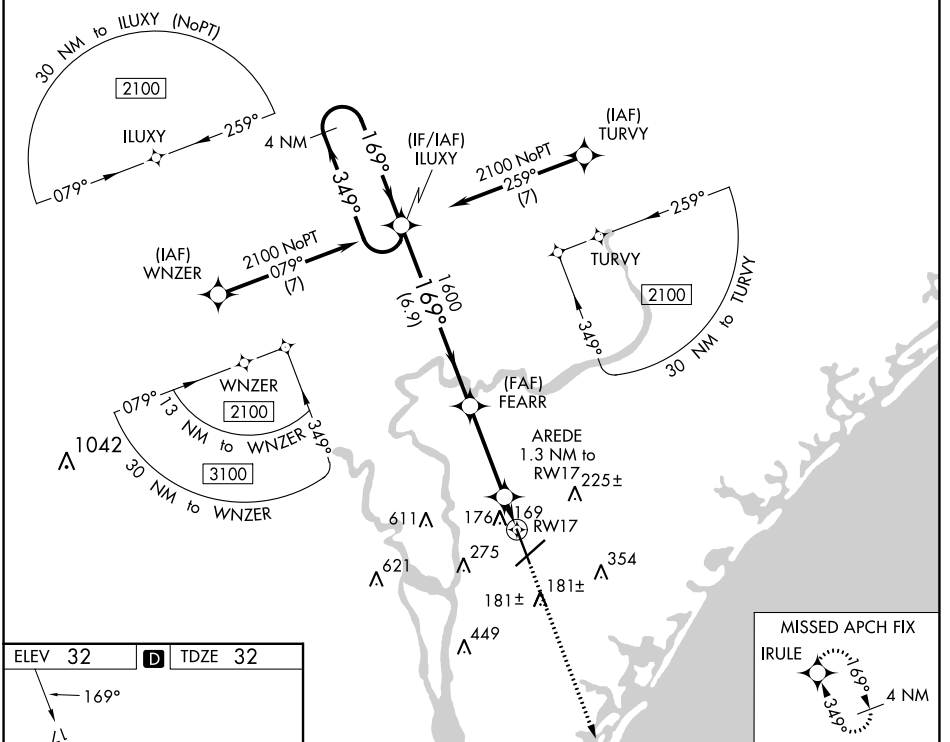
RNAV (GPS) RWY 17

WILMINGTON INTL (ILM)

⚠ For uncompensated Baro-VNAV systems, LNAV/VNAV NA below -7°C (20°F) or above 54°C (130°F). DME/DME RNP-0.3 NA. Rwy 17 helicopter visibility reduction below ¾ SM NA.

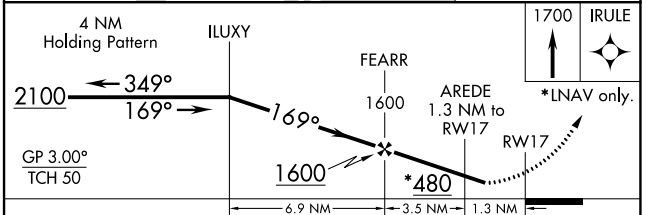
MISSED APPROACH: Climb to 1700 direct IRULE and hold.

ATIS 124.975	WILMINGTON APP CON * 118.25 284.65 (164°-343°) 135.75 317.425 (344°-163°)	WILMINGTON TOWER * 119.9 (CTAF) 0 239.3	GND CON 121.9 348.6	UNICOM 122.95
------------------------	---	--	-------------------------------	-------------------------



ELEV 32	D	TDZE 32
----------------	----------	----------------

The inset map shows the airport layout with Runway 17 highlighted. It includes the runway number 17, the elevation of 32 feet, and the TDZE of 32 feet. The map also shows the location of the tower (TWR) at 136 feet and other navigational aids.



CATEGORY	A	B	C	D
LPV DA		369-1/8	337 (400-1/8)	
LNAV/VNAV DA		405-1/4	373 (400-1/4)	
LNAV MDA	420-1	388 (400-1)	420-1/8	388 (400-1/8)
C CIRCLING	560-1	528 (600-1)	720-2 688 (700-2)	920-3 888 (900-3)

HIRL Rwy 6-24 and 17-35 **Ⓛ**
REIL Rwy 6 and 17 **Ⓛ**