

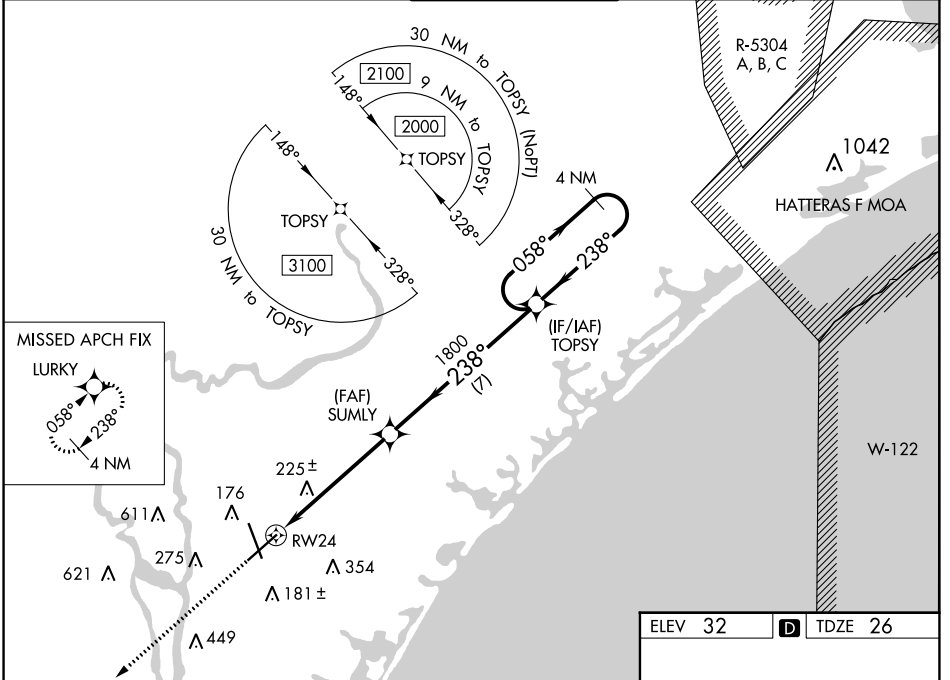
WAAS CH 45899 W24A	APP CRS 238°	Rwy Idg TDZE Apt Elev	8016 26 32
--	------------------------	-----------------------------	---------------------------------------

RNAV (GPS) RWY 24

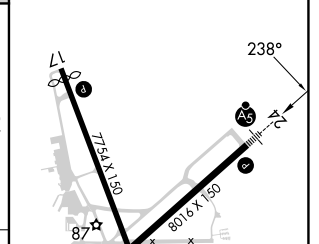
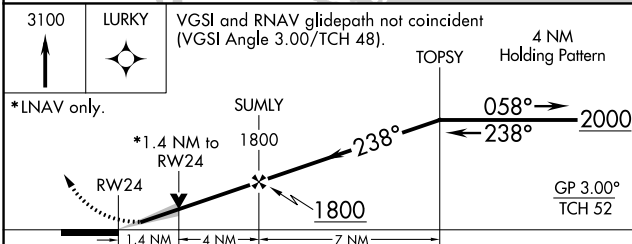
WILMINGTON INTL (ILM)

	For uncompensated Baro-VNAV systems, LNAV/VNAV NA below -7°C (20°F) or above 54°C (130°F). DME/DME RNP-0.3 NA. ** RVR 1800 authorized with use of FD or AP or HUD to DA.	MALSR		MISSED APPROACH: Climb to 3100 direct LURKY and hold.

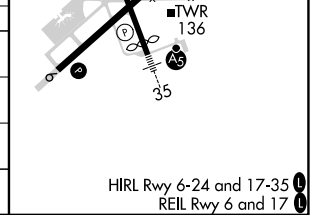
ATIS 124.975	WILMINGTON APP CON * 118.25 284.65 (164°-343°) 135.75 317.425 (344°-163°)	WILMINGTON TOWER * 119.9 (CTAF) 239.3	GND CON 121.9 348.6	UNICOM 122.95
------------------------	---	--	-------------------------------	-------------------------



ELEV 32	D TDZE 26
---------	------------------



CATEGORY	A	B	C	D
LPV DA **	226/24 200 (200-½)			
LNAV/VNAV DA	401/40 375 (400-¾)			
LNAV MDA	500/24 474 (500-½)		500/50 474 (500-1)	
C CIRCLING	560-1 528 (600-1)		720-2 688 (700-2)	920-3 888 (900-3)



SE-2, 03 OCT 2024 to 31 OCT 2024

SE-2, 03 OCT 2024 to 31 OCT 2024