

WAAS CH 86210 W05A	APP CRS 053°	Rwy Idg TDZE Apt Elev	5590 5498 5507
--	------------------------	-----------------------------	---

RNAV (GPS) RWY 5

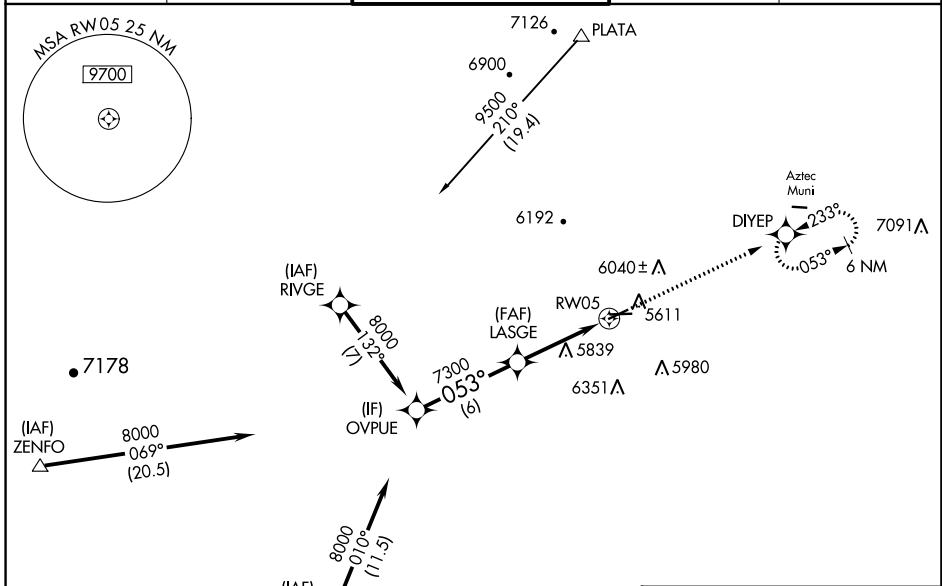
FOUR CORNERS RGNL (FMN)

RNP APCH-GPS.

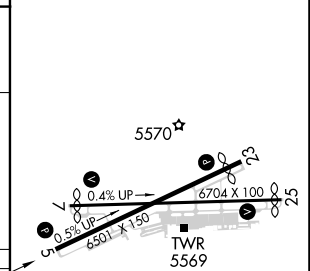
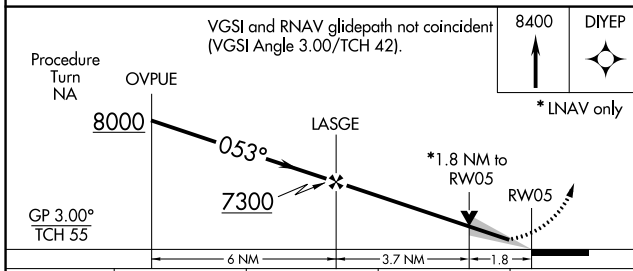
Baro-VNAV and VDP NA when using Durango altimeter setting. For uncompensated Baro-VNAV systems, LNAV/VNAV NA below -25°C or above 54°C. Circling NA for Cat D southeast of Rwy 5 and south of Rwy 25. When local altimeter setting not received, use Durango altimeter setting and increase LPV DA to 5993 feet and LNAV/VNAV DA to 6163 and all visibilities $\frac{1}{8}$ SM; increase all MDAs 260 feet and visibility LNAV Cat B/C/D and Circling Cat A/B/C $\frac{3}{4}$ SM.

MISSED APPROACH:
Climb to 8400 direct
DIYEP and hold.

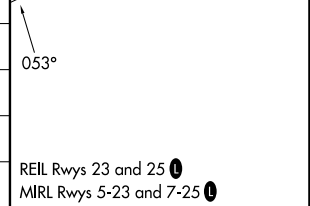
ATIS 127.15	DENVER CENTER 118.575 348.7	FARMINGTON TOWER* 118.9 (CTAF) 0 257.8	GND CON 121.7	UNICOM 122.95
-----------------------	---------------------------------------	--	-------------------------	-------------------------



ELEV 5507	TDZE 5498
-----------	-----------



CATEGORY	A	B	C	D
LPV DA		5750- $\frac{3}{4}$	252 (300- $\frac{3}{4}$)	
LNAV/ VNAV DA		5920-1 $\frac{1}{4}$	422 (500-1 $\frac{1}{4}$)	
LNAV MDA	6100-1	602 (600-1)	6100-1 $\frac{3}{4}$	602 (600-1 $\frac{3}{4}$)
CIRCLING	6100-1 593 (600-1)	6180-1 673 (700-1)	6380-2 $\frac{1}{2}$ 873 (900-2 $\frac{1}{2}$)	6460-3 953 (1000-3)



SW-1, 03 OCT 2024 to 31 OCT 2024

SW-1, 03 OCT 2024 to 31 OCT 2024