

WAAS CH <b>90110</b> <b>W07A</b>	APP CRS <b>076°</b>	Rwy Idg <b>6248</b> TDZE <b>5502</b> Apt Elev <b>5507</b>
-------------------------------------	---------------------	---

# RNAV (GPS) RWY 7

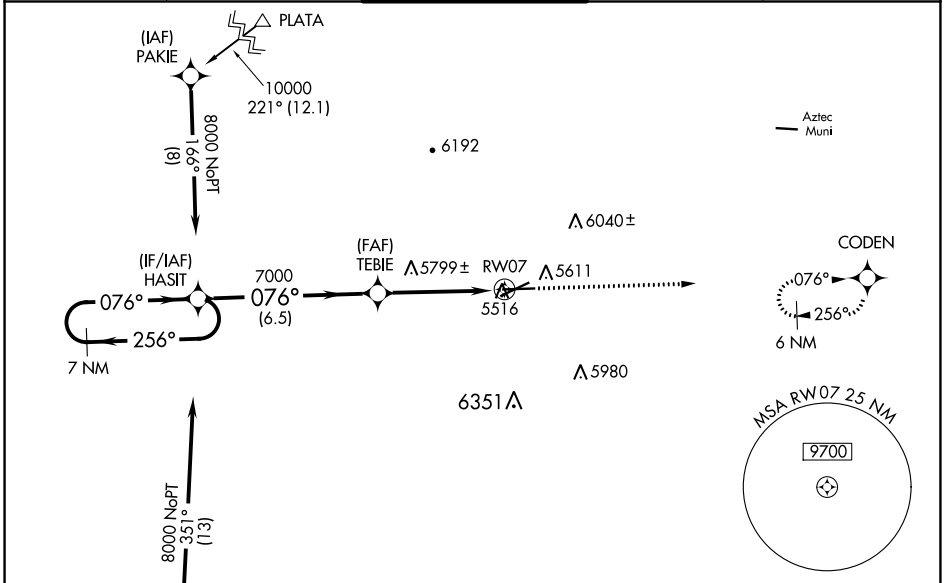
FOUR CORNERS RGNL (FMN)

RNP APCH-GPS.

**⚠** Baro-VNAV and VDP NA when using Durango altimeter setting. For uncompensated Baro-VNAV systems, LNAV/VNAV NA below -25°C or above 54°C. Circling NA for Cat D southeast of Rwy 5 and south of Rwy 25. When local altimeter setting not received, use Durango altimeter setting and increase LPV DA to 6003 feet and LNAV/VNAV DA to 6223 and all visibilities  $\frac{5}{8}$  SM; increase all MDAs 260 feet and visibility LNAV Cats B/C/D and Circling Cats A/B/C  $\frac{7}{8}$  SM.

MISSED APPROACH: Climb to 8300 direct CODEN and hold.

ATIS <b>127.15</b>	DENVER CENTER <b>118.575 348.7</b>	FARMINGTON TOWER* <b>118.9</b> (CTAF) <b>257.8</b>	GND CON <b>121.7</b>	UNICOM <b>122.95</b>
--------------------	------------------------------------	--	----------------------	----------------------

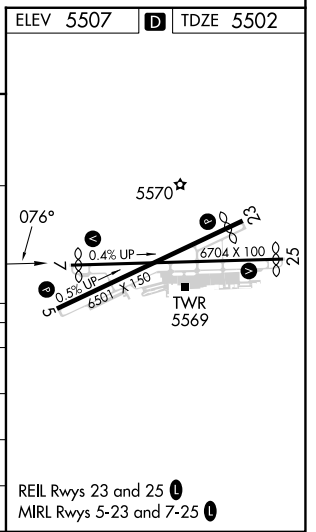
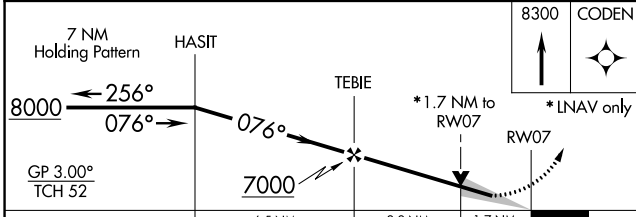


SW-1, 03 OCT 2024 to 31 OCT 2024

SW-1, 03 OCT 2024 to 31 OCT 2024

ELEV 5507 **D** TDZE 5502

Procedure NA for arrivals at DERMA via V95 southwest bound.



CATEGORY	A	B	C	D
LPV DA		5760- $\frac{3}{4}$	258 (300- $\frac{3}{4}$ )	
LNAV/VNAV DA		5980-1 $\frac{3}{8}$	478 (500-1 $\frac{3}{8}$ )	
LNAV MDA	6060-1	558 (600-1)	6060-1 $\frac{5}{8}$	558 (600-1 $\frac{5}{8}$ )
CIRCLING	6100-1 593 (600-1)	6180-1 673 (700-1)	6380-2 $\frac{1}{2}$ 873 (900-2 $\frac{1}{2}$ )	6460-3 953 (1000-3)