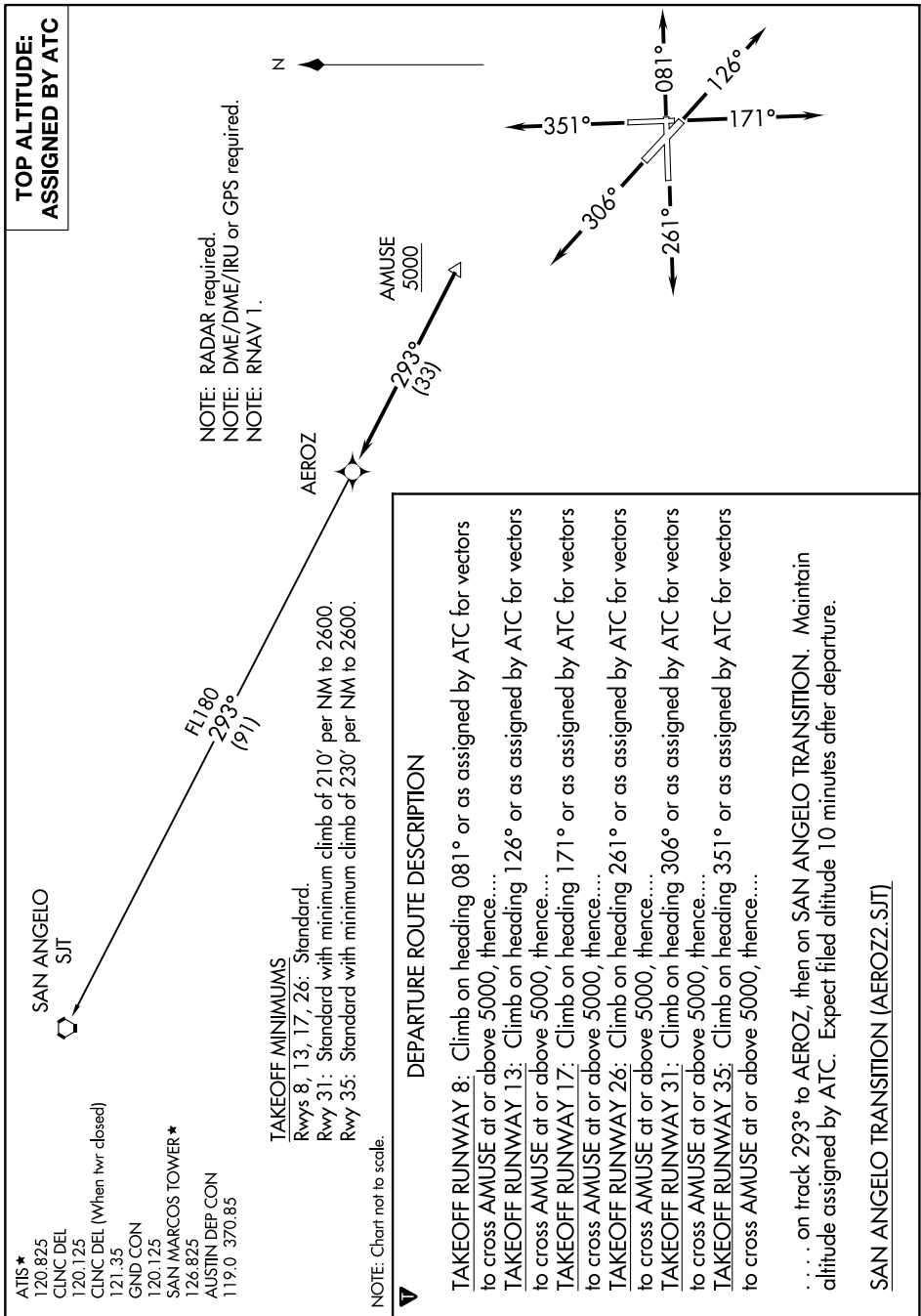


SC-3, 03 OCT 2024 to 31 OCT 2024



TOP ALTITUDE:  
ASSIGNED BY ATC

NOTE: RADAR required.  
NOTE: DME/DME/IRU or GPS required.  
NOTE: RNAV 1.

FL 180  
29.3°  
(19.1)

AMUSE  
5000  
293°  
(3.3)

SAN ANGELO  
SJT

AEROZ

ATIS \*  
120.825  
CLNC DEL  
120.125  
CLNC DEL (When hvr closed)  
121.35  
GND CON  
120.125  
SAN MARCOS TOWER \*  
126.825  
AUSTIN DEP CON  
119.0 370.85

TAKEOFF MINIMUMS  
Rwys 8, 13, 17, 26: Standard.  
Rwy 31: Standard with minimum climb of 210' per NM to 2600.  
Rwy 35: Standard with minimum climb of 230' per NM to 2600.

NOTE: Chart not to scale.

DEPARTURE ROUTE DESCRIPTION

TAKEOFF RUNWAY 8: Climb on heading 081° or as assigned by ATC for vectors to cross AMUSE at or above 5000, thence....  
 TAKEOFF RUNWAY 13: Climb on heading 126° or as assigned by ATC for vectors to cross AMUSE at or above 5000, thence....  
 TAKEOFF RUNWAY 17: Climb on heading 171° or as assigned by ATC for vectors to cross AMUSE at or above 5000, thence....  
 TAKEOFF RUNWAY 26: Climb on heading 261° or as assigned by ATC for vectors to cross AMUSE at or above 5000, thence....  
 TAKEOFF RUNWAY 31: Climb on heading 306° or as assigned by ATC for vectors to cross AMUSE at or above 5000, thence....  
 TAKEOFF RUNWAY 35: Climb on heading 351° or as assigned by ATC for vectors to cross AMUSE at or above 5000, thence....

... on track 293° to AEROZ, then on SAN ANGELO TRANSITION. Maintain altitude assigned by ATC. Expect filed altitude 10 minutes after departure.

SAN ANGELO TRANSITION (AEROZ2-SJT)

SC-3, 03 OCT 2024 to 31 OCT 2024