

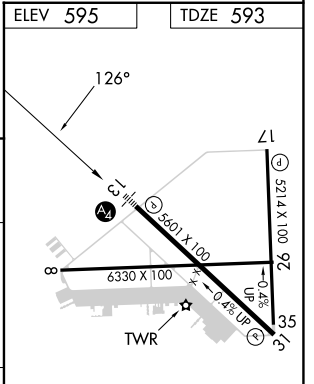
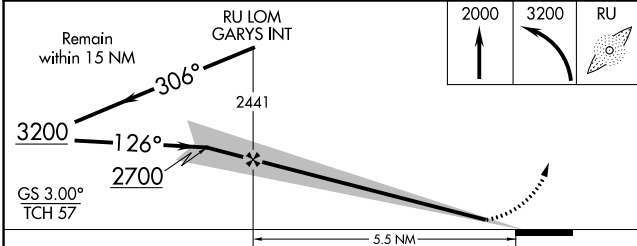
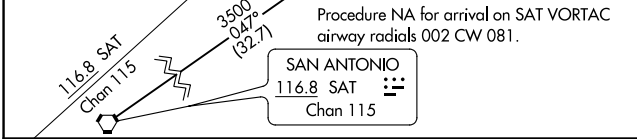
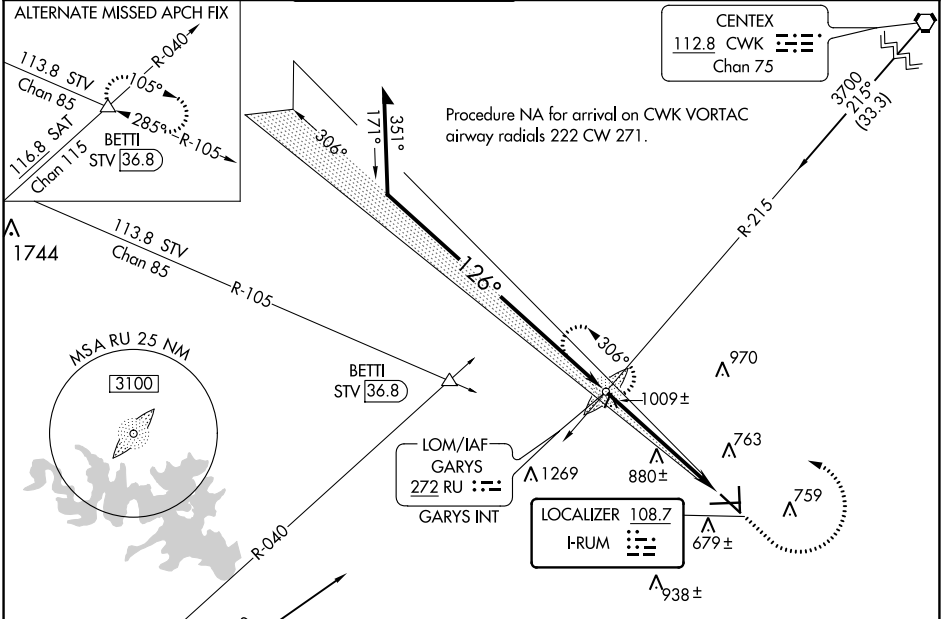
LOC I-RUM 108.7	APP CRS 126°	Rwy Idg TDZE Apt Elev	5601 593 595
---------------------------	------------------------	-----------------------------	---

ILS or LOC RWY 13

SAN MARCOS RGNL (HYI)

ADF required.	MALS 	MISSED APPROACH: Climb to 2000 then climbing left turn to 3200 direct GARYS LOM/INT and hold.
<p> Circling NA for Cat E southwest of Rwy 13-31. Inop table does not apply to S-ILS 13 all Cats. For inop ALS, increase S-LOC 13 Cat C/D/E visibility to 1/8 SM.</p>		

ATIS * 120.825	AUSTIN APP CON 119.0 370.85	SAN MARCOS TOWER * 126.825 (CTAF)	GND CON 120.125	CLNC DEL 120.125	CLNC DEL 121.35 (when twr closed)
--------------------------	---------------------------------------	---	---------------------------	----------------------------	--



CATEGORY	A	B	C	D	E
	S-ILS-13				
S-LOC-13	1260- ³ / ₄ 667 (700- ³ / ₄)		1260- ¹ / ₄ 667 (700- ¹ / ₄)		
CIRCLING	1260-1 665 (700-1)		1260- ¹ / ₈ 665 (700- ¹ / ₈)	1320- ² / ₄ 725 (800- ² / ₄)	1340- ² / ₄ 745 (800- ² / ₄)

MIRL Rwy 8-26, 13-31, and 17-35					
FAF to MAP 5.5 NM					
Knots	60	90	120	150	180
Min:Sec	5:30	3:40	2:45	2:12	1:50

SC-3, 03 OCT 2024 to 31 OCT 2024

SC-3, 03 OCT 2024 to 31 OCT 2024