

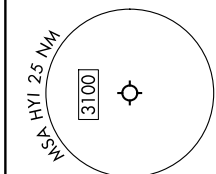
# ILEXY FOUR DEPARTURE (RNAV)

SC-3, 03 OCT 2024 to 31 OCT 2024

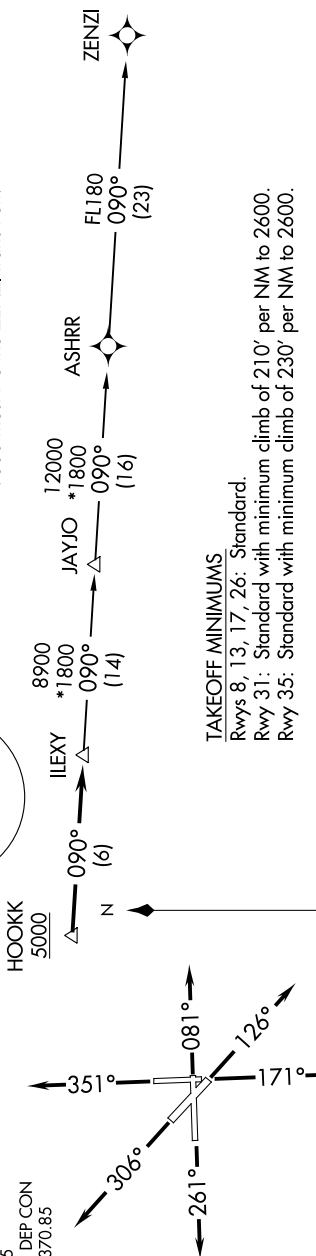
**TOP ALTITUDE:  
ASSIGNED BY ATC**

RNAV 1 - DME/DME/IRU or GPS.  
RADAR required.

NOTE: Houston terminal area arrivals expect routing from ILEXY.  
NOTE: JAYJO transition to join V306 only.  
NOTE: Aircraft not destined the Houston terminal area or joining V306 must file the ZENZI transition.



- ATIS \*
- 120.825
- CLNC DEL
- 120.125
- CLNC DEL (when hvr closed)
- 121.35
- GND CON
- 120.125
- SAN MARCOS TOWER \*
- 126.825
- AUSTIN DEP CON
- 119.0 370.85



### TAKEOFF MINIMUMS

Rwys 8, 13, 17, 26: Standard.  
Rwy 31: Standard with minimum climb of 210' per NM to 2600.  
Rwy 35: Standard with minimum climb of 230' per NM to 2600.

NOTE: Chart not to scale.

### DEPARTURE ROUTE DESCRIPTION

- TAKEOFF RUNWAY 8:** Climb on heading 081° or as assigned by ATC for vectors to cross HOOKK at or above 5000, thence. . . .
  - TAKEOFF RUNWAY 13:** Climb on heading 126° or as assigned by ATC for vectors to cross HOOKK at or above 5000, thence. . . .
  - TAKEOFF RUNWAY 17:** Climb on heading 171° or as assigned by ATC for vectors to cross HOOKK at or above 5000, thence. . . .
  - TAKEOFF RUNWAY 26:** Climb on heading 261° or as assigned by ATC for vectors to cross HOOKK at or above 5000, thence. . . .
  - TAKEOFF RUNWAY 31:** Climb on heading 306° or as assigned by ATC for vectors to cross HOOKK at or above 5000, thence. . . .
  - TAKEOFF RUNWAY 35:** Climb on heading 351° or as assigned by ATC for vectors to cross HOOKK at or above 5000, thence. . . .
- . . . . on track 090° to ILEXY, then on transition. Maintain altitude assigned by ATC. Expect filed altitude 10 minutes after departure.

JAYJO TRANSITION (ILEXY4.JAYJO)  
ZENZI TRANSITION (ILEXY4.ZENZI)

# ILEXY FOUR DEPARTURE (RNAV)

(ILEXY4.ILEXY) 15JUN23

SC-3, 03 OCT 2024 to 31 OCT 2024