

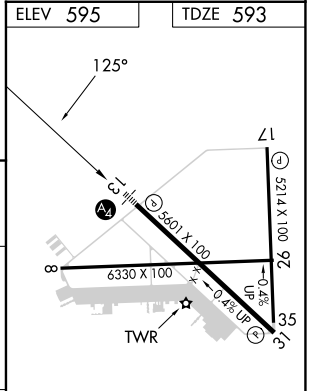
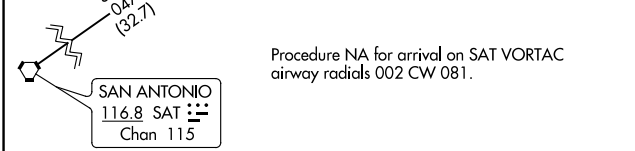
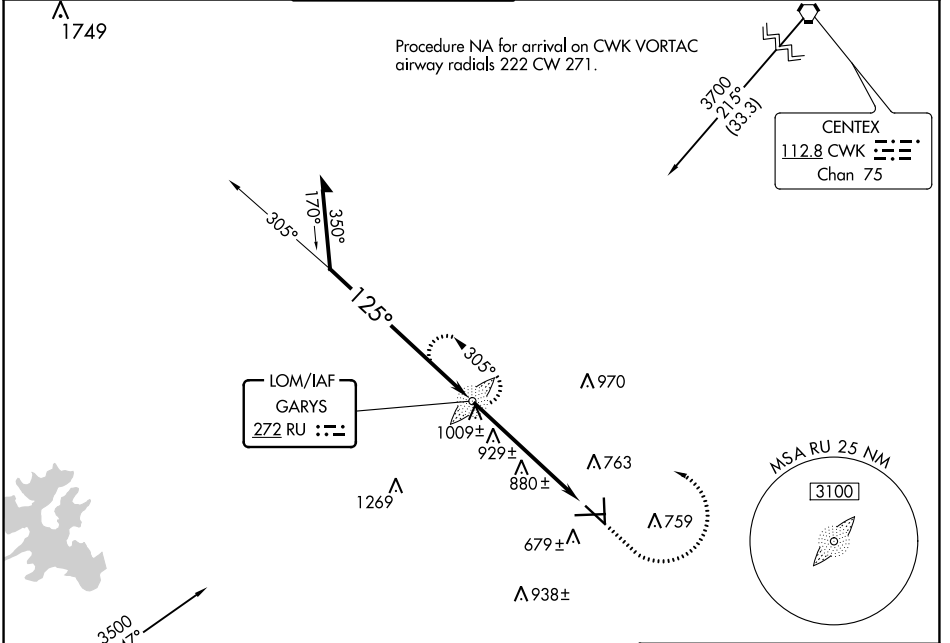
LOM RU	APP CRS	Rwy Idg	5601
<u>272</u>	<u>125°</u>	TDZE	593
		Apt Elev	595

NDB RWY 13

SAN MARCOS RGNL (HYI)

		MALS	MISSED APPROACH: Climb to 2000 then climbing left turn to 3200 direct GARYS LOM and hold.		
--	--	------	---	--	--

ATIS ★ 120.825	AUSTIN APP CON 119.0 370.85	SAN MARCOS TOWER★ 126.825 (CTAF)	GND CON 120.125	CLNC DEL 120.125	CLNC DEL 121.35 (when twr closed)
--------------------------	---------------------------------------	--	---------------------------	----------------------------	--



CATEGORY	A	B	C	D
S-13	1240-3/4 647 (700-3/4)		1240-1 5/8 647 (700-1)	
CIRCLING	1240-1 645 (700-1)		1240-1 7/8 645 (700-1 1/8)	1320-2 1/4 725 (800-2 1/4)

MIRL Rwy's 8-26, 13-31, and 17-35					
FAF to MAP 5.5 NM					
Knots	60	90	120	150	180
Min:Sec	5:30	3:40	2:45	2:12	1:50

SC-3, 03 OCT 2024 to 31 OCT 2024

SC-3, 03 OCT 2024 to 31 OCT 2024