

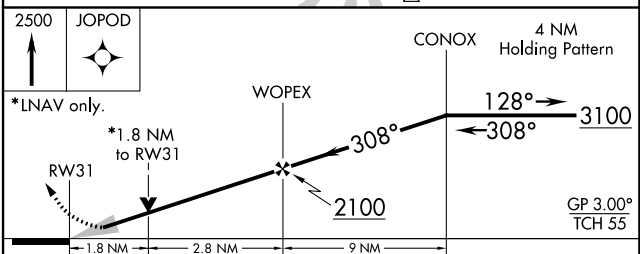
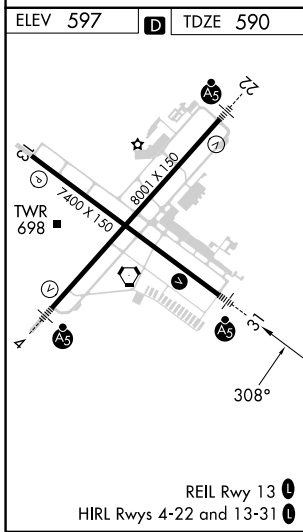
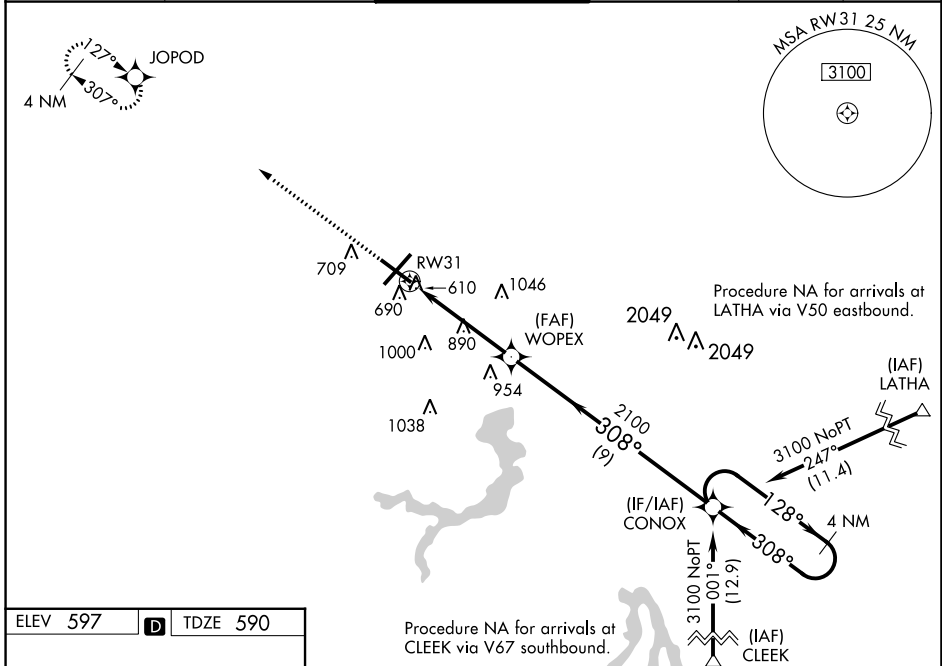
WAAS CH <b>90124</b> <b>W31A</b>	APP CRS <b>308°</b>	Rwy Idg TDZE <b>590</b> Apt Elev <b>597</b>	<b>7000</b>
--	------------------------	---	-------------

# RNAV (GPS) RWY 31

ABRAHAM LINCOLN CAPITAL (SPI)

<p><b>⚠</b> DME/DME RNP-0.3 NA. Baro-VNAV NA below -16°C (4°F). When local altimeter setting not received, use Lincoln altimeter setting: increase all DA 57 feet and MDA 60 feet, increase Circling Cat C and D visibility ¼ SM. VDP and ASR Baro-VNAV NA when using Logan County altimeter setting. For inoperative MALSR, increase LPV visibility to ¾ all Cats, increase LNAV/VNAV Cat D visibility to 1.</p>	<p>MALSR</p>	<p>MISSED APPROACH: Climb to 2500 direct JOPOD and hold.</p>
---	--------------	--

ATIS <b>127.65 270.1</b>	SAINT LOUIS APP CON * <b>126.15 323.0</b>	SPRINGFIELD TOWER * <b>121.3 (CTAF) 257.8</b>	GND CON <b>121.9 348.6</b>	CLNC DEL <b>121.7</b>	UNICOM <b>122.95</b>
-----------------------------	--	--	-------------------------------	--------------------------	-------------------------



CATEGORY	A	B	C	D
LPV DA	840-½ 250 (300-½)			
LNAV/VNAV DA	865-½ 275 (300-½)			865-¾ 275 (300-¾)
LNAV MDA	1200-½ 610 (700-½)	1200-1¼ 610 (700-1¼)		1200-1½ 610 (700-1½)
<b>C</b> CIRCLING	1200-1 603 (700-1)	1360-2¼ 762 (800-2¼)		1380-2½ 782 (800-2½)

EC-3, 03 OCT 2024 to 31 OCT 2024

EC-3, 03 OCT 2024 to 31 OCT 2024