

| | | | |
|--|------------------------|-----------------------------|---|
| WAAS CH 70309 W04A | APP CRS 043° | Rwy Idg TDZE Apt Elev | 7927 592 598 |
|--|------------------------|-----------------------------|---|

RNAV (GPS) RWY 4

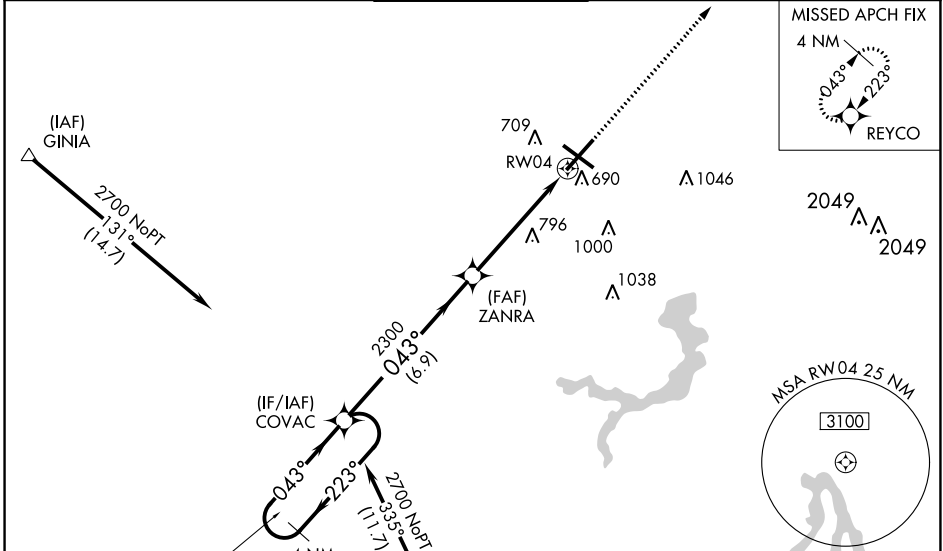
ABRAHAM LINCOLN CAPITAL (SPI)

RNP APCH - GPS.

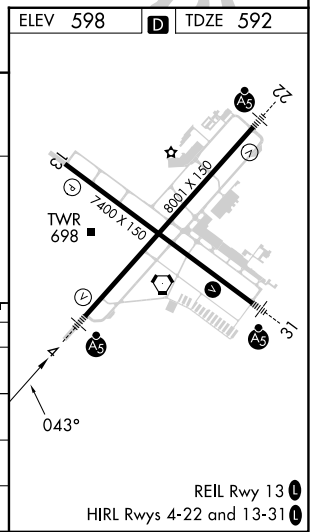
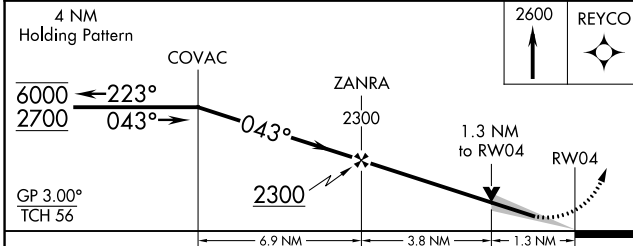
⚠ For uncompensated Baro-VNAV systems, LNAV/VNAV NA below -16°C or above 54°C. Baro-VNAV and VDP NA when using Lincoln altimeter setting. For inop ALS, increase LPV all Cats visibility to RVR 4500 and LNAV Cats C/D visibility to 1 3/8 SM. When local altimeter ASR setting not received, use Lincoln altimeter setting and increase LPV DA to 912 feet; increase LNAV/VNAV DA to 989 feet and all visibilities to RVR 3500; increase all MDAs 60 feet and LNAV visibility Cat C/D to RVR 5500 and Circling visibility Cat C/D 1/4 SM. For inop ALS when using Lincoln altimeter setting, increase LPV all Cats visibility to RVR 4500.

MALSR MISSED APPROACH: Climb to 2600 direct REYCO and hold.

| | | | | | |
|-----------------------------|--|--|-------------------------------|--------------------------|-------------------------|
| ATIS 127.65 270.1 | SAINT LOUIS APP CON * 126.15 323.0 | SPRINGFIELD TOWER * 121.3 (CTAF) 0 257.8 | GND CON 121.9 348.6 | CLNC DEL 121.7 | UNICOM 122.95 |
|-----------------------------|--|--|-------------------------------|--------------------------|-------------------------|



| | |
|----------|------------|
| ELEV 598 | D TDZE 592 |
|----------|------------|



| CATEGORY | A | B | C | D |
|--------------|-----------------------|-----------------------|-------------------------------|-------------------------------|
| LPV DA | | 854/24 | 262 (300-1/2) | |
| LNAV/VNAV DA | | 931/26 | 339 (400-1/2) | |
| LNAV MDA | 1060/24 | 468 (500-1/2) | 1060/50 | 468 (500-1) |
| CIRCLING | 1060-1 462 (500-1) | 1100-1 502 (600-1) | 1360-2 1/4 762 (800-2 1/4) | 1380-2 1/2 782 (800-2 1/2) |

EC-3, 03 OCT 2024 to 31 OCT 2024

EC-3, 03 OCT 2024 to 31 OCT 2024