

WAAS CH 65631 W13A	APP CRS 136°	Rwy Idg 4498 TDZE 2130 Apt Elev 2131
--	------------------------	---

RNAV (GPS) RWY 13

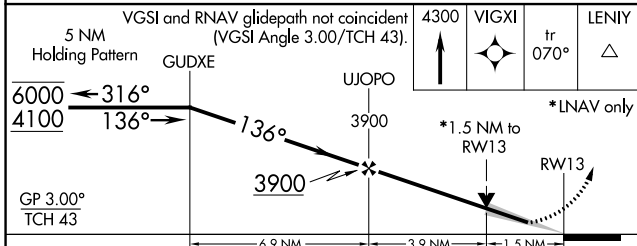
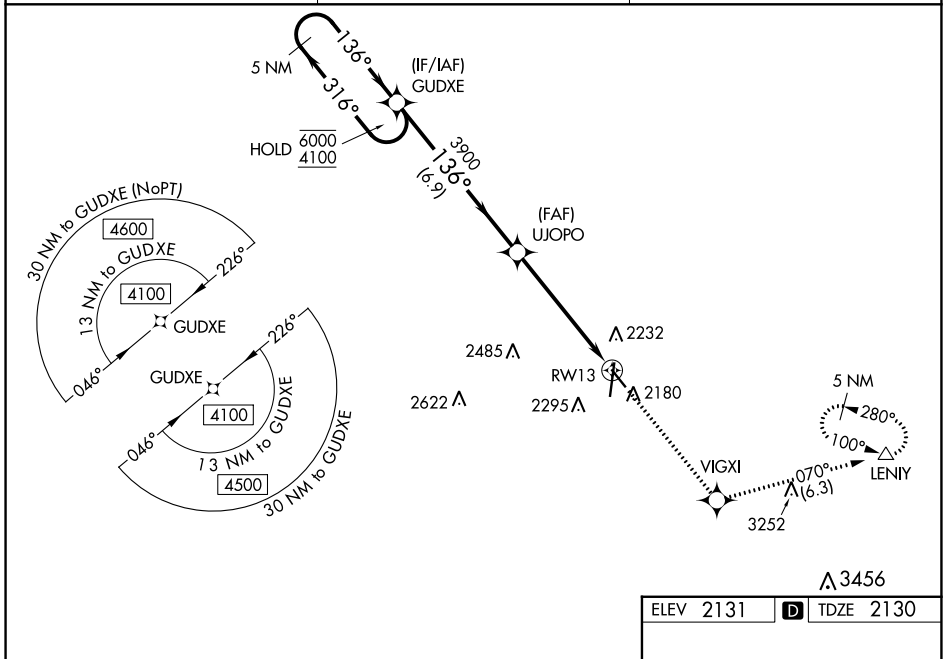
KEARNEY RGNL (E.A.R.)

RNP APCH.

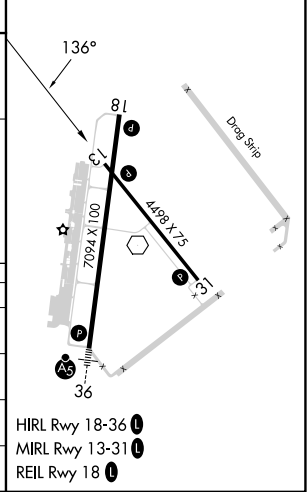
⚠ Baro-VNAV and VDP NA when using Holdrege altimeter setting. For uncompensated Baro-VNAV systems, LNAV/VNAV NA below -23°C or above 54°C. When local altimeter setting not received, use Holdrege altimeter setting: increase LPV DA to 2407 feet and all Cats visibility $\frac{1}{8}$ SM; increase LNAV/VNAV DA to 2457 feet and all Cats visibility $\frac{3}{8}$ SM and all MDAs 80 feet; increase visibility LNAV and Circling Cat C $\frac{1}{8}$ SM.

MISSED APPROACH: Climb to 4300 direct VIGXI and on track 070° to LENIY and hold.

AWOS-3PT 123.875	MINNEAPOLIS CENTER 119.4 278.8	UNICOM 123.0 (CTAF) 1
----------------------------	--	---------------------------------



ELEV 2131	TDZE 2130
-----------	-----------



CATEGORY	A	B	C	D
LPV DA	2330- $\frac{3}{4}$	200 (200- $\frac{3}{4}$)		NA
LNAV/VNAV DA	2380- $\frac{3}{4}$	250 (300- $\frac{3}{4}$)		NA
LNAV MDA	2720-1	590 (600-1)	2720-1 $\frac{3}{4}$ 590 (600-1 $\frac{3}{4}$)	NA
C CIRCLING	2720-1	589 (600-1)	2720-1 $\frac{3}{4}$ 589 (600-1 $\frac{3}{4}$)	NA

NC-2, 03 OCT 2024 to 31 OCT 2024

NC-2, 03 OCT 2024 to 31 OCT 2024