

WAAS CH <b>86213</b> <b>W18A</b>	APP CRS <b>182°</b>	Rwy Idg <b>7094</b> TDZE <b>2130</b> Apt Elev <b>2132</b>
--	------------------------	---

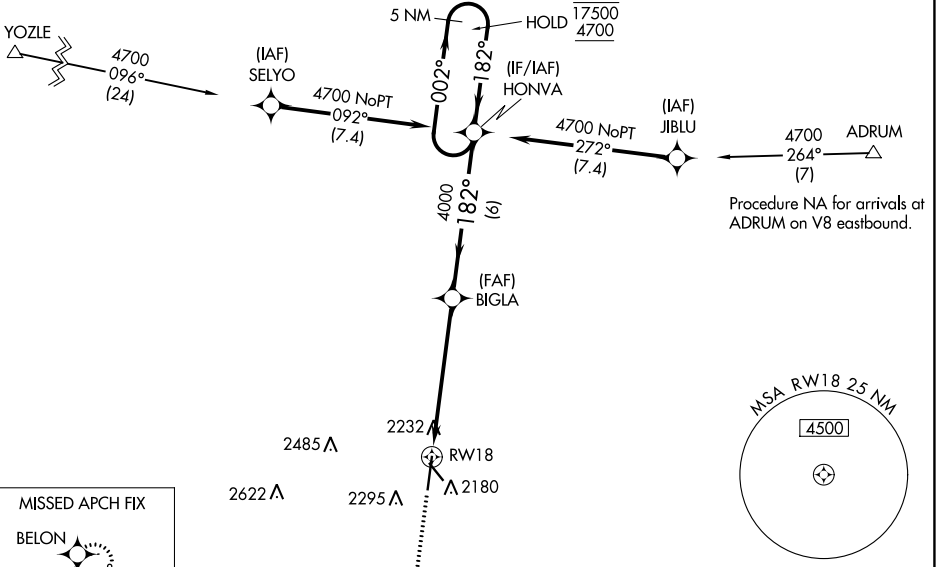
# RNAV (GPS) RWY 18

KEARNEY RGNL (E.A.R.)

RNP APCH - GPS.	MISSED APPROACH: Climb to 4700 direct BELON and hold.
<p><b>⚠</b> For uncompensated Baro-VNAV systems, LNAV/VNAV NA below -23°C or above 54°C.</p>	

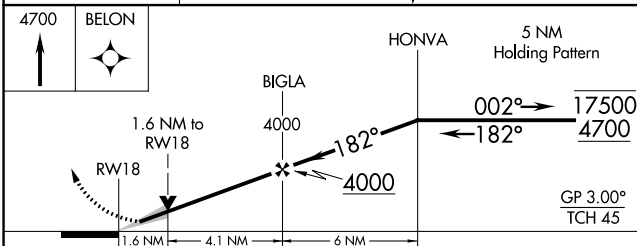
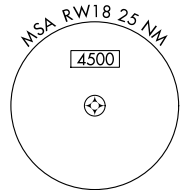
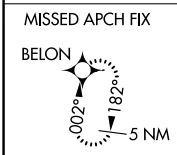
AWOS-3PT <b>123.875</b>	MINNEAPOLIS CENTER <b>119.4 278.8</b>	UNICOM <b>123.0 (CTAF) <b>Ⓛ</b></b>
----------------------------	--	--

Procedure NA for arrivals at YOZLE on V6 west bound.

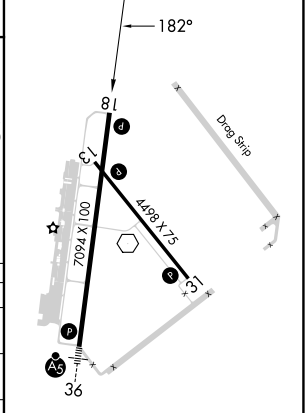


NC-2, 03 OCT 2024 to 31 OCT 2024

NC-2, 03 OCT 2024 to 31 OCT 2024



ELEV 2132	<b>D</b> TDZE 2130
-----------	--------------------



CATEGORY	A	B	C	D
LPV DA		2330-3/4	200 (200-3/4)	
LNAV/VNAV DA		2393-7/8	263 (300-7/8)	
LNAV MDA	2680-1 550 (600-1)		2680-1 5/8 550 (600-1 5/8)	
<b>C</b> CIRCLING	2680-1 548 (600-1)		2680-1 5/8 548 (600-1 5/8)	2840-2 1/4 708 (800-2 1/4)

HIRL Rwy 18-36 <b>Ⓛ</b>
MIRL Rwy 13-31 <b>Ⓛ</b>
REIL Rwy 18 <b>Ⓛ</b>