

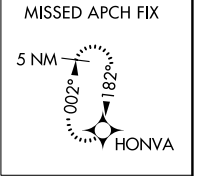
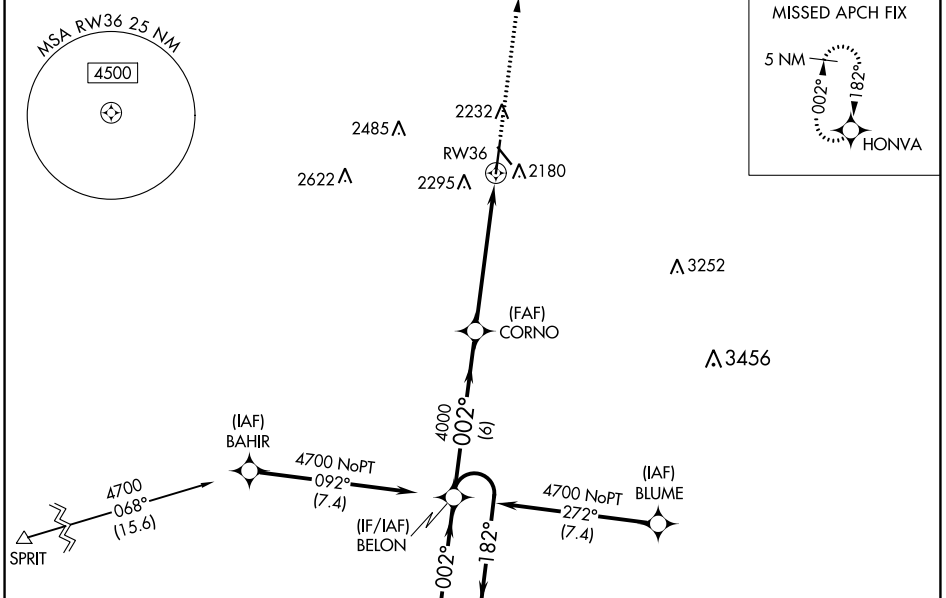
WAAS CH <b>90113</b> <b>W36A</b>	APP CRS <b>002°</b>	Rwy Idg <b>7094</b> TDZE <b>2132</b> Apt Elev <b>2132</b>
--	------------------------	---

# RNAV (GPS) RWY 36

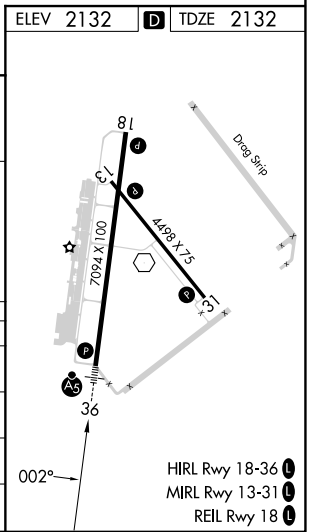
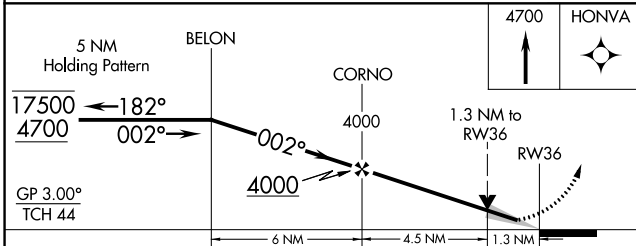
KEARNEY RGNL (E.A.R.)

RNP APCH - GPS.	MALSR	MISSED APPROACH: Climb to 4700 direct HONVA and hold.
<p>▼ For uncompensated Baro-VNAV systems, LNAV/VNAV NA below -22°C or above 54°C. For inop ALS, increase LNAV/VNAV all Cats visibility to ½ SM.</p>		

AWOS-3PT <b>123.875</b>	MINNEAPOLIS CENTER <b>119.4 278.8</b>	UNICOM <b>123.0 (CTAF)</b>
----------------------------	--	-------------------------------



Procedure NA for arrivals at SPRIT on V220 southwest bound.



CATEGORY	A	B	C	D
LPV DA		2332-½	200 (200-½)	
LNAV/VNAV DA		2419-½	287 (300-½)	
LNAV MDA	2580-½	448 (500-½)	2580-⅞	448 (500-⅞)
CIRCLING	2600-1	468 (500-1)	2640-1½ 508 (600-1½)	2840-2¼ 708 (800-2¼)

NC-2, 03 OCT 2024 to 31 OCT 2024

NC-2, 03 OCT 2024 to 31 OCT 2024