

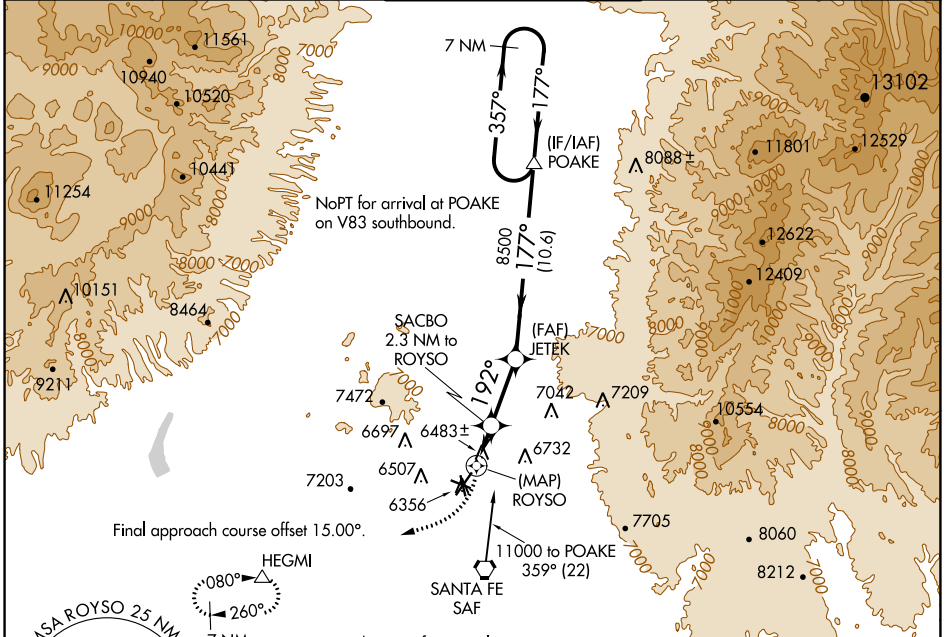
APP CRS	Rwy Idg	<b>8366</b>
<b>192°</b>	TDZE	<b>6349</b>
	Apt Elev	<b>6349</b>

# RNAV (GPS) RWY 20

SANTA FE RGNL (SAF)

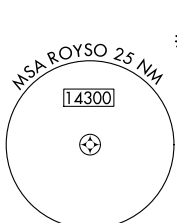
DME/DME RNP-0.3 NA.		MISSED APPROACH: Climbing right turn to 9000 direct HEGMI and hold.		
---------------------	--	---	--	--

ATIS <b>128.55</b>	ALBUQUERQUE CENTER <b>132.8 346.35</b>	SANTA FE TOWER ★ <b>119.5 (CTAF) 239.3</b>	GND CON <b>121.7</b>	UNICOM <b>122.95</b>
-----------------------	---	---	-------------------------	-------------------------



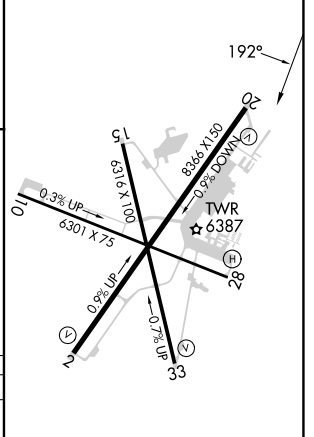
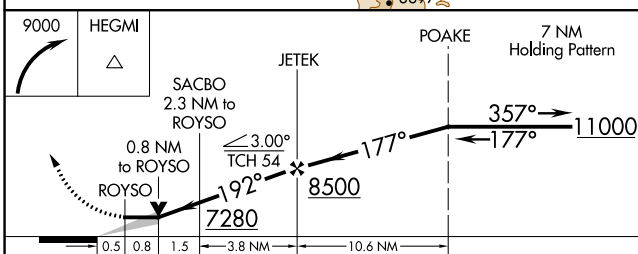
SW-1, 03 OCT 2024 to 31 OCT 2024

SW-1, 03 OCT 2024 to 31 OCT 2024



Procedure NA for arrivals at SAF VORTAC on V263-611 westbound.

ELEV 6349	<b>D</b>	TDZE 6349
-----------	----------	-----------



CATEGORY	A	B	C	D
LNVA MDA	6800-1	451 (500-1)	6800-1 $\frac{3}{8}$	451 (500-1 $\frac{3}{8}$ )
<b>C</b> CIRCLING	6800-1 451 (500-1)	6920-1 571 (600-1)	7340-3 991 (1000-3)	7660-3 1311 (1400-3)

REIL Rwy 10, 15, 20 and 33  
MIRL Rwy 2-20 and 15-33 **D**