

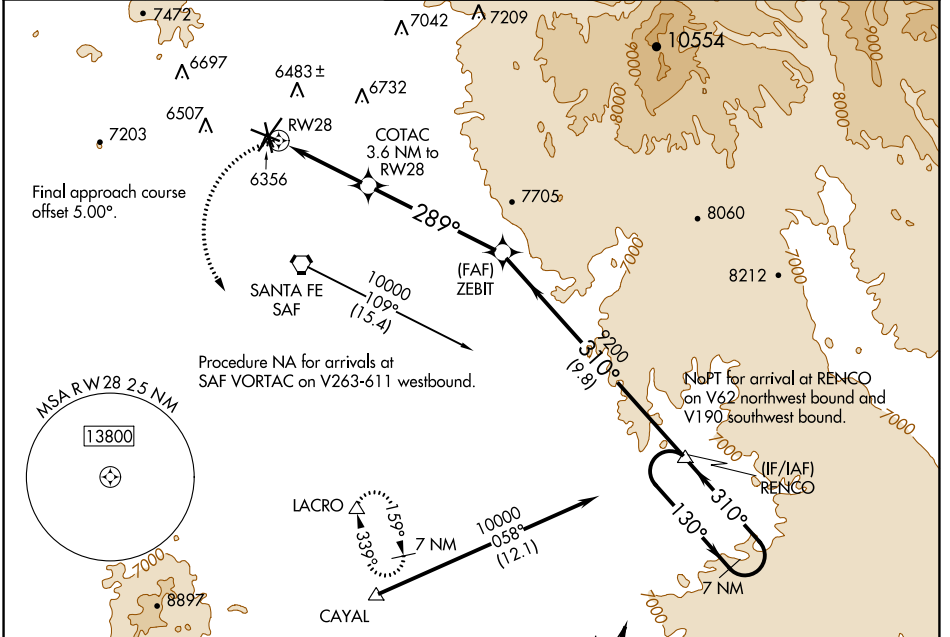
APP CRS	Rwy Idg	<b>6301</b>
<b>289°</b>	TDZE	<b>6307</b>
	Apt Elev	<b>6349</b>

# RNAV (GPS) RWY 28

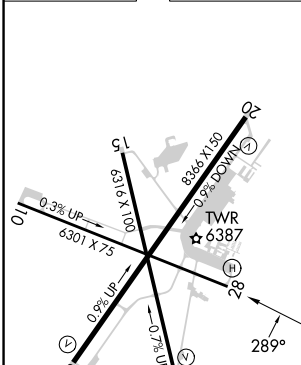
SANTA FE RGNL (SAF)

<b>▽</b>	DME/DME RNP-0.3 NA.	MISSED APPROACH: Climbing left turn to 9200 direct LACRO and hold.
----------	---------------------	--

ATIS <b>128.55</b>	ALBUQUERQUE CENTER <b>132.8 346.35</b>	SANTA FE TOWER ★ <b>119.5 (CTAF) 239.3</b>	GND CON <b>121.7</b>	UNICOM <b>122.95</b>
-----------------------	---	---	-------------------------	-------------------------



ELEV 6349	<b>D</b>	TDZE 6307
-----------	----------	-----------



REIL Rws 10, 15, 20 and 33	MIRL Rws 2-20 and 15-33			
9200	LACRO	ZEBIT	RENCQ	7 NM Holding Pattern
COTAC 3.6 NM to RWY 28	1.9 NM to RWY 28	1.7 NM	5.4 NM	9.8 NM
≤ 3.00° TCH 45	289°	310°	130°	10000
310°	310°	130°	10000	
7480	9200			
CATEGORY	A	B	C	D
LNAV MDA	6960-1	653 (700-1)	6960-1 $\frac{7}{8}$	653 (700-1 $\frac{7}{8}$ )
<b>C</b> CIRCLING	6960-1	611 (700-1)	7340-3 991 (1000-3)	7660-3 1311 (1400-3)

SW-1, 03 OCT 2024 to 31 OCT 2024

SW-1, 03 OCT 2024 to 31 OCT 2024