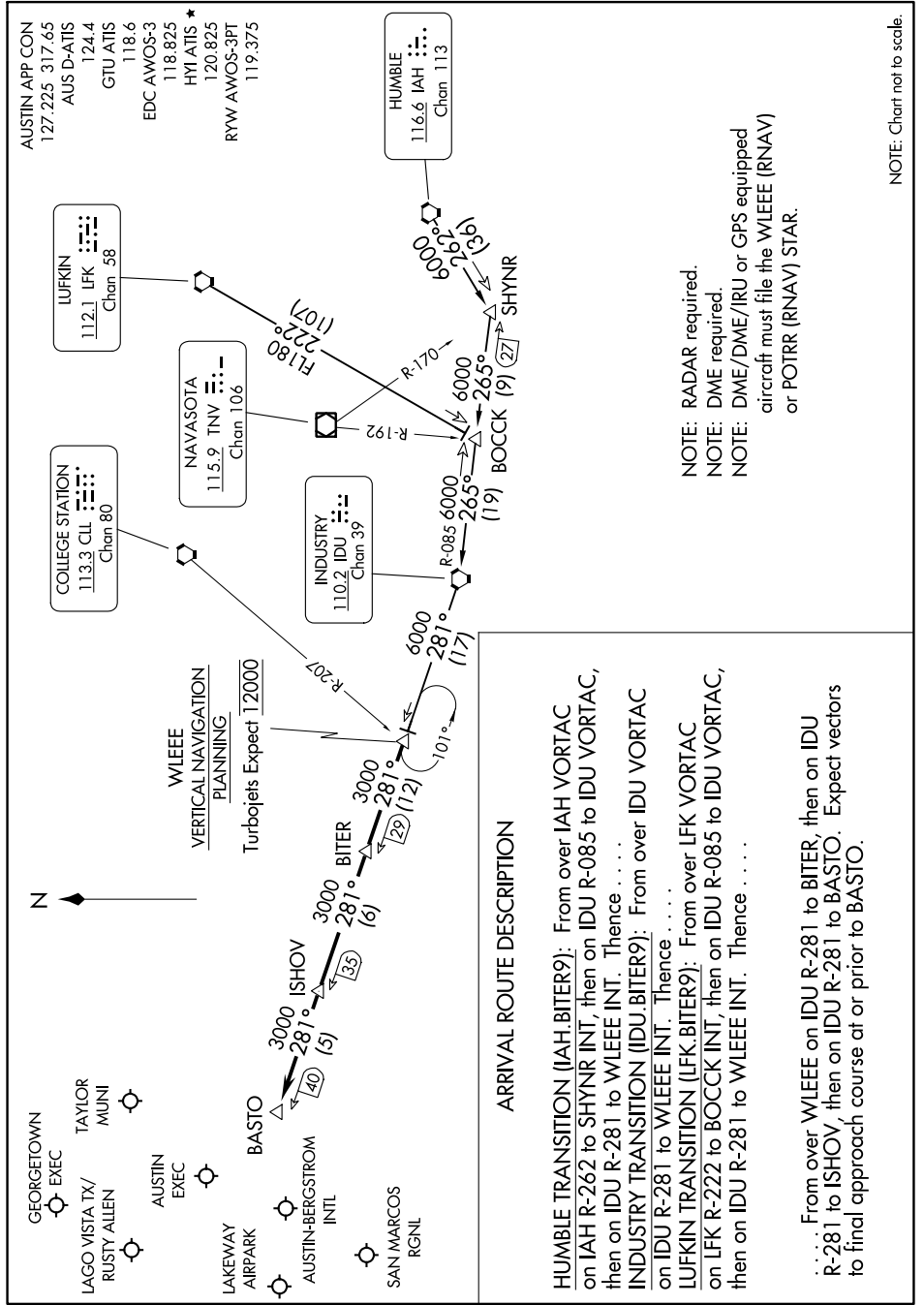


BITER NINE ARRIVAL

SC-3, 03 OCT 2024 to 31 OCT 2024



NOTE: RADAR required.
 NOTE: DME required.
 NOTE: DME/DME/IRU or GPS equipped aircraft must file the WLEEE (RNAV) or POTRR (RNAV) STAR.

NOTE: Chart not to scale.

BITER NINE ARRIVAL

SC-3, 03 OCT 2024 to 31 OCT 2024