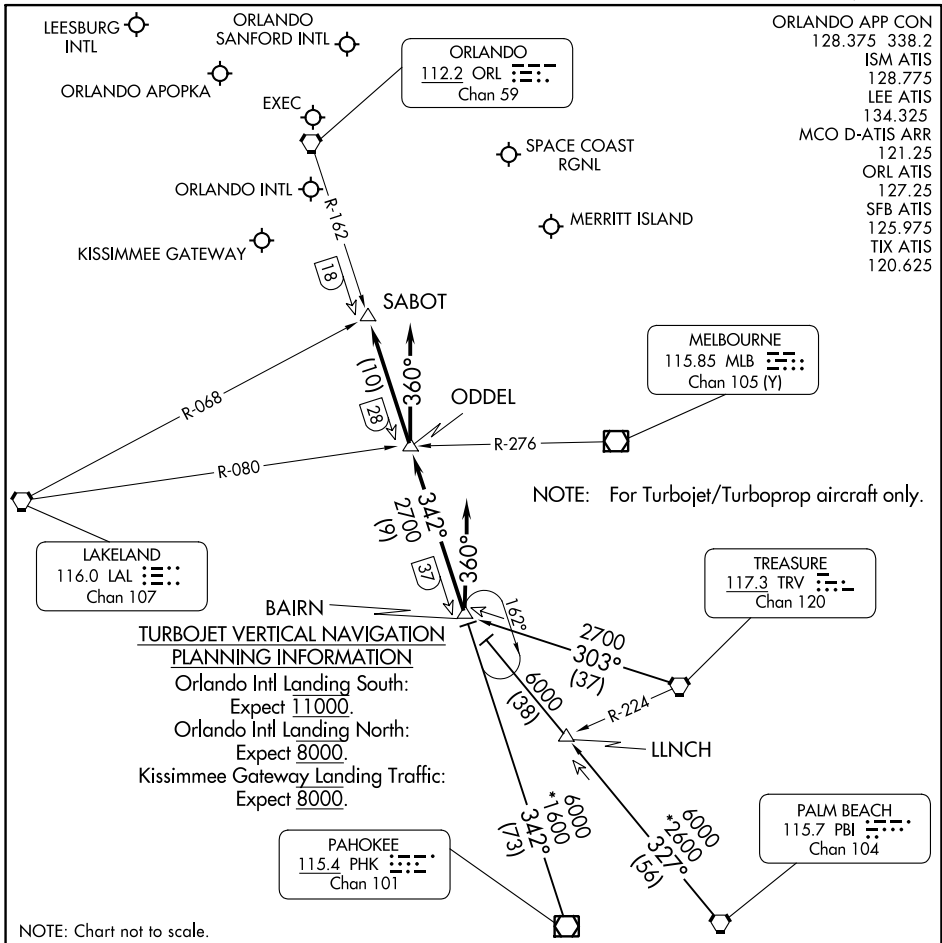


# GOOFY SEVEN ARRIVAL

ORLANDO, FLORIDA



SE-3, 03 OCT 2024 to 31 OCT 2024

SE-3, 03 OCT 2024 to 31 OCT 2024

**TURBOJET VERTICAL NAVIGATION PLANNING INFORMATION**

Orlando Intl Landing South:  
Expect 11000.

Orlando Intl Landing North:  
Expect 8000.

Kissimmee Gateway Landing Traffic:  
Expect 8000.

NOTE: For Turbojet/Turboprop aircraft only.

NOTE: Chart not to scale.

### ARRIVAL ROUTE DESCRIPTION

**PAHOKEE TRANSITION (PHK.GOOFY7):** From over PHK VOR/DME on PHK R-342 to BAIRN INT.

Thence . . .

**PALM BEACH TRANSITION (PBI.GOOFY7):** From over PBI VORTAC on PBI R-327 to BAIRN INT.

Thence . . .

**TREASURE TRANSITION (TRV.GOOFY7):** From over TRV VORTAC on TRV R-303 to BAIRN INT.

Thence . . .

#### ORLANDO INTL:

. . . Rwy 17/18: From over BAIRN INT on ORL VORTAC R-162 to ODDEL INT. Depart ODDEL INT heading 360° for vector to final approach course.

. . . Rwy 35/36: Depart BAIRN INT heading 360° for vector to final approach course.

**LEESBURG INTL:** . . . From over BAIRN INT on ORL VORTAC R-162 to SABOT INT. Expect RADAR vectors to the airport.

**ALL OTHER AIRPORTS:** . . . From over BAIRN INT on ORL VORTAC R-162 to SABOT INT.

Expect RADAR vectors to final approach course.

# GOOFY SEVEN ARRIVAL

ORLANDO, FLORIDA