

MINNIE FIVE ARRIVAL  
(MINNIE.MINNEE5) 13JAN11

(MINNIE.MINNEE5) 24081  
MINNIE FIVE ARRIVAL

AL-571 (FAA)

ORLANDO, FLORIDA

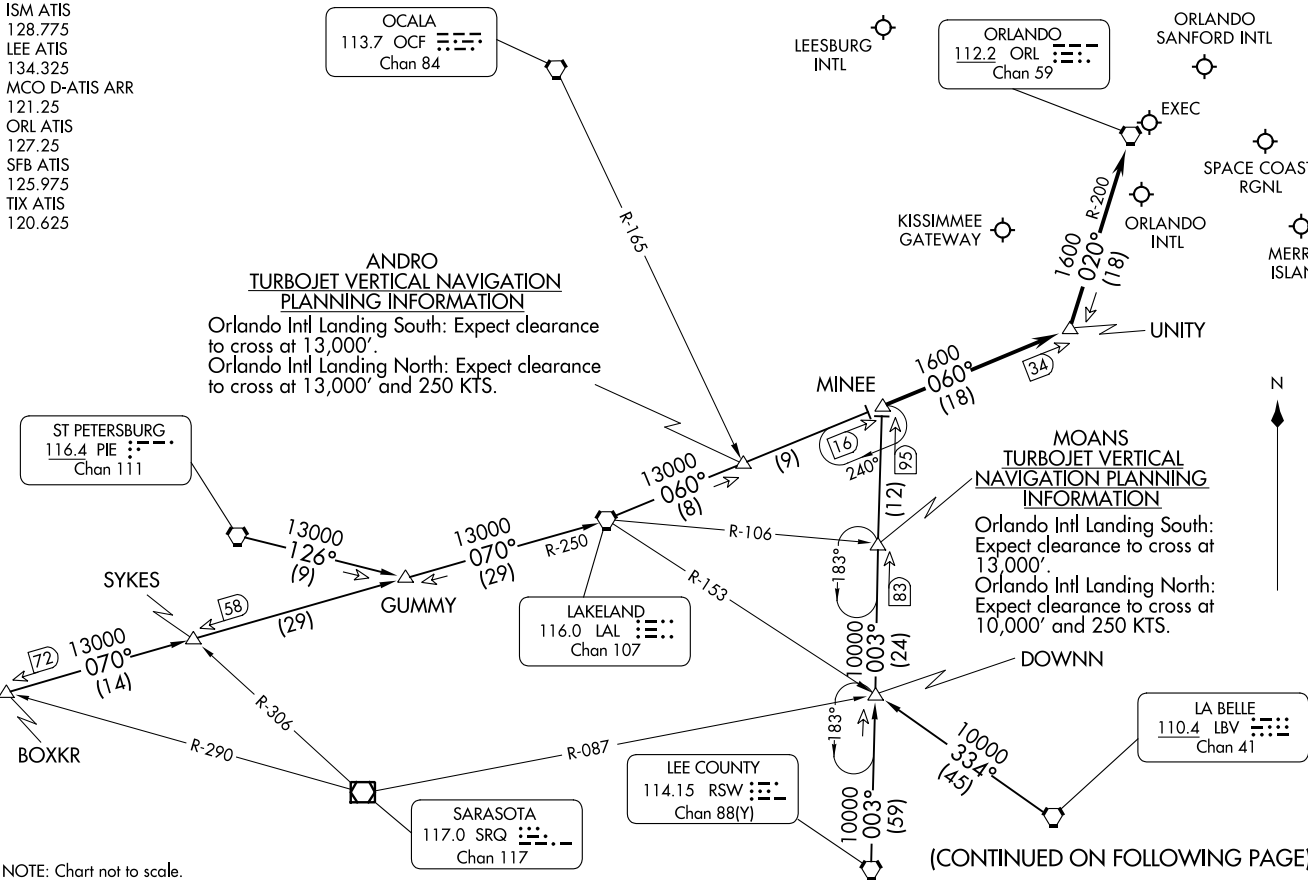
ORLANDO APP CON  
134.05 339.8  
ISM ATIS  
128.775  
LEE ATIS  
134.325  
MCO D-ATIS ARR  
121.25  
ORL ATIS  
127.25  
SFB ATIS  
125.975  
TIX ATIS  
120.625

**ANDRO  
TURBOJET VERTICAL  
NAVIGATION  
PLANNING INFORMATION**

Orlando Intl Landing South: Expect clearance to cross at 13,000'.  
Orlando Intl Landing North: Expect clearance to cross at 13,000' and 250 KTS.

**MOANS  
TURBOJET VERTICAL  
NAVIGATION  
PLANNING INFORMATION**

Orlando Intl Landing South: Expect clearance to cross at 13,000'.  
Orlando Intl Landing North: Expect clearance to cross at 10,000' and 250 KTS.



NOTE: Chart not to scale.

(CONTINUED ON FOLLOWING PAGE)

ORLANDO, FLORIDA

ARRIVAL ROUTE DESCRIPTION

BOXKR TRANSITION (BOXKR.MINEE5): From over BOXKR INT via LAL R-250 to LAL VORTAC, then via LAL R-060 to MINEE INT. Thence. . . .

LA BELLE TRANSITION (LBV.MINEE5): From over LBV VORTAC via LBV R-334 to DOWNN INT, then via RSW R-003 to MINEE INT. Thence. . . .

LEE COUNTY TRANSITION (RSW.MINEE5): From over RSW VORTAC via RSW R-003 to MINEE INT. Thence. . . .

ST. PETERSBURG TRANSITION (PIE.MINEE5): From over PIE VORTAC via PIE R-126 to GUMMY INT, then via LAL R-250 to LAL VORTAC, then via LAL R-060 to MINEE INT. Thence. . . .

. . . . From over MINEE INT via LAL R-060 to UNITY INT, then via ORL R-200 to ORL VORTAC.

LEESBURG INTL: Expect radar vectors to airport after UNITY INT.

ALL OTHER AIRPORTS: Expect radar vectors to final approach course after UNITY INT.

SE-3, 03 OCT 2024 to 31 OCT 2024

SE-3, 03 OCT 2024 to 31 OCT 2024