

# HI-ILS Y or LOC Y RWY 32

LOC I-UXI <b>108.3</b>	APCH CRS <b>317°</b>	Rwy Idg TDZE Arprt Elev <b>9002</b> <b>27</b> <b>28</b>
---------------------------	-------------------------	--

AL-576 [USAF]

GULFPORT-BILOXI INTL (KGPT)

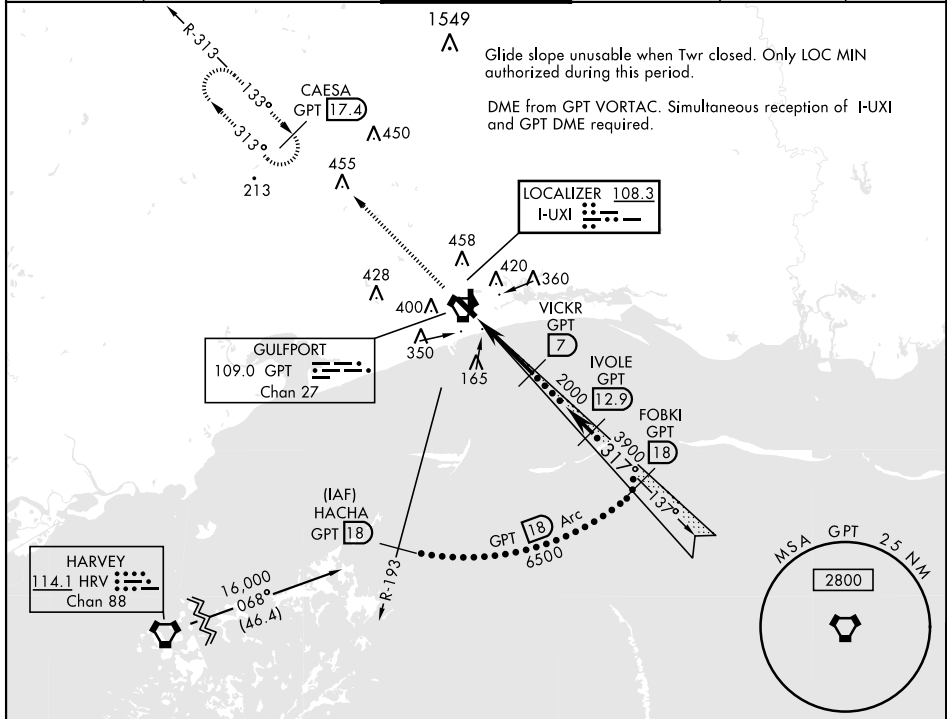
RADAR or DME required.

- ▼ \* When ALS inop increase CAT E RVR 40, RVR 18 authorized with use of FD or AP or HUD to DA.
- ▲ \*\* When ALS inop increase RVR 55.



MISSED APPROACH: Climb to 2000 on GPT VORTAC R-313 to CAESA/GPT 17.4 DME and hold.

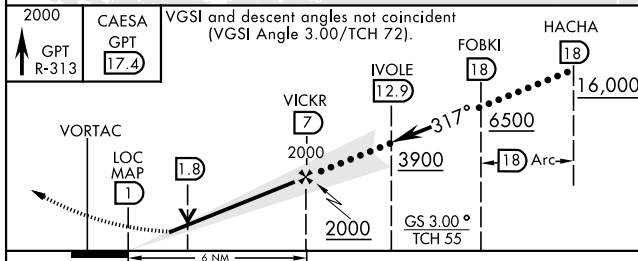
ATIS ★ <b>119.45</b>	GULFPORT APP CON <b>124.6 354.1</b> 130°-309° <b>127.5 254.25</b> 310°-129°	GULFPORT TOWER ★ <b>123.7</b> CTAF <b>0 339.8</b>	GND CON <b>120.4 348.6</b>	UNICOM <b>122.95</b>	ASR
-------------------------	---	--	-------------------------------	-------------------------	-----



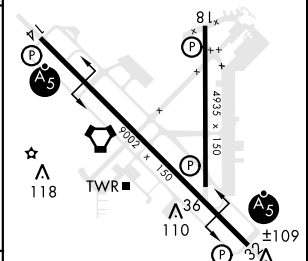
SC-4, 03 OCT 2024 to 31 OCT 2024

SC-4, 03 OCT 2024 to 31 OCT 2024

EMERG SAFE ALT 100 NM 3100



ELEV 28	TDZE 27
---------	---------



CATEGORY	C	D	E
S-ILS 32 *	228/24	200	(200-½)
S-LOC 32 **	380/30	352	(400-¾)
CIRCLING	820-2 ¼ 791 (800-2 ¼)	820-2 ½ 791 (800-2 ½)	820-2 ¾ 791 (800-2 ¾)

HIRL Rwy 14-32 **0**  
MRL Rwy 18-36 **0**

# HI-ILS Y or LOC Y RWY 32