

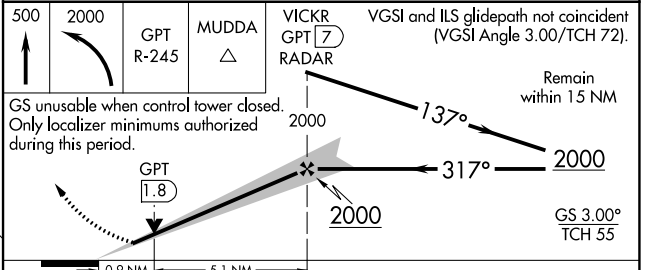
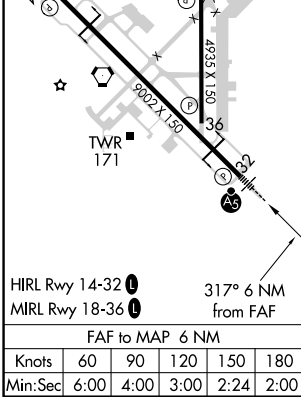
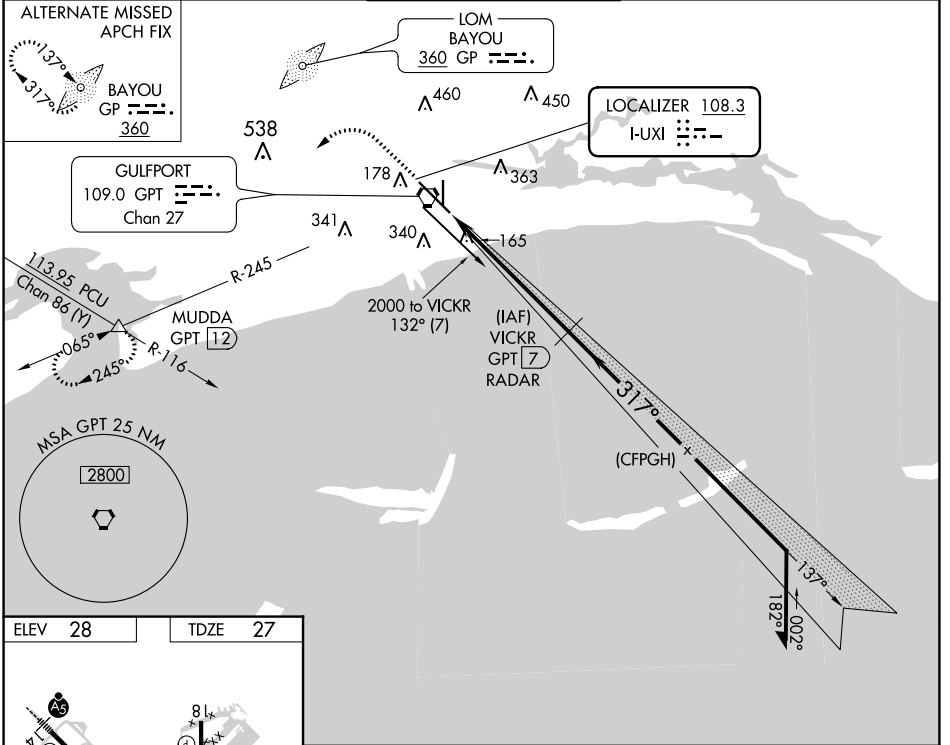
LOC I-UXI <b>108.3</b>	APP CRS <b>317°</b>	Rwy Idg <b>9002</b>
		TDZE <b>27</b>
		Apt Elev <b>28</b>

# ILS Z or LOC Z RWY 32

GULFPORT-BILOXI INTL (GPT)

DME or RADAR required, except DME required when control tower closed.		MALSR 	MISSED APPROACH: Climb to 500 then climbing left turn to 2000 on GPT VORTAC R-245 to MUDDA INT/GPT 12 DME and hold.
<p> Rwy 32 helicopter visibility reduction below RVR 4000 NA. Inop table does not apply to S-ILS 32. DME from GPT VORTAC. Simultaneous reception of I-UXI and GPT DME required. For inop ALS, increase S-LOC 32 all Cats visibility to RVR 5500.</p>			

ATIS <b>119.45</b>	GULFPORT APP CON * <b>127.5 254.25</b>	GULFPORT TOWER * <b>123.7 (CTAF) 0 339.8</b>	GND CON <b>120.4 348.6</b>	UNICOM <b>122.95</b>
-----------------------	---	---	-------------------------------	-------------------------



500	2000	GPT R-245	MUDDA	VICKR GPT 7 RADAR	VGSi and ILS glidepath not coincident (VGSi Angle 3.00/TCH 72).				
GS unusable when control tower closed. Only localizer minimums authorized during this period.					Remain within 15 NM				
CATEGORY	A		B		C	D	E		
S-ILS 32			277/40		250 (300-¾)				
S-LOC 32			380/40		353 (400-¾)				
<input checked="" type="checkbox"/> CIRCLING	520-1 492 (500-1)		640-1 612 (700-1)		760-2 732 (800-2)		760-2¼ 732 (800-2¼)		760-2½ 732 (800-2½)

SC-4, 03 OCT 2024 to 31 OCT 2024

SC-4, 03 OCT 2024 to 31 OCT 2024