

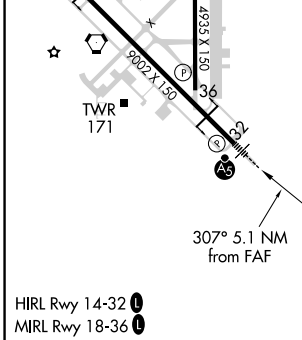
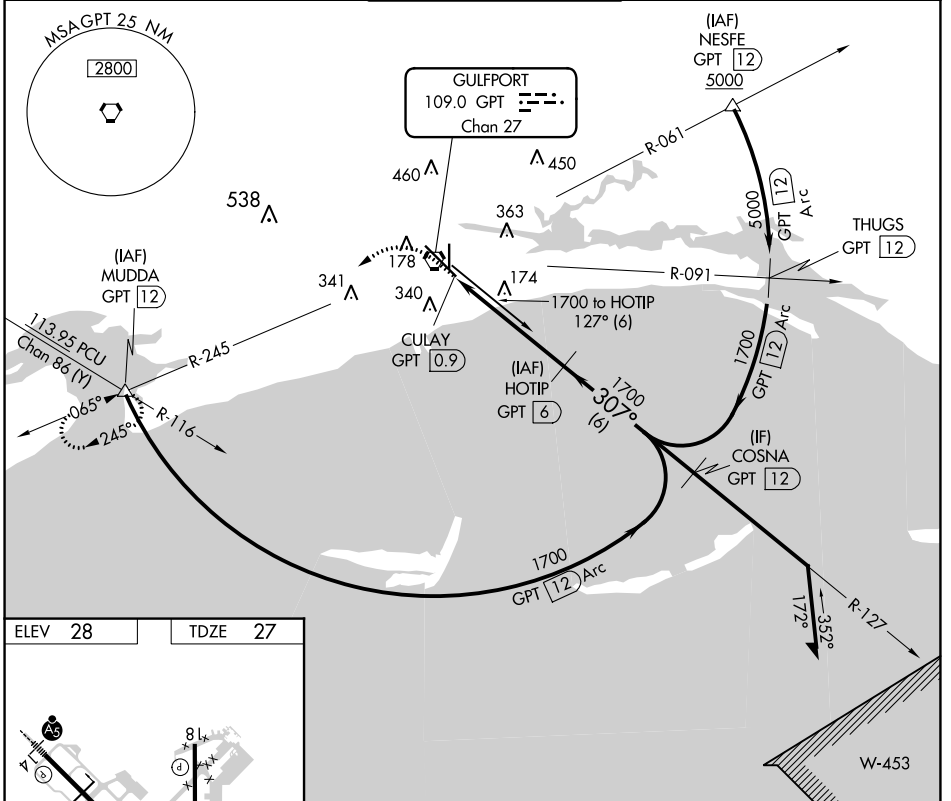
VORTAC GPT <b>109.0</b> Chan <b>27</b>	APP CRS <b>307°</b>	Rwy Idg TDZE Apt Elev	<b>9002</b> <b>27</b> <b>28</b>
--	------------------------	-----------------------------	---------------------------------------

# VOR Z RWY 32

GULFPORT-BILOXI INTL (GPT)

DME required.	MALSR 	MISSED APPROACH: Climb to 700 then climbing left turn to 2000 on GPT VORTAC R-245 to MUDDA INT/12 DME and hold.
---------------	-----------	---

ATIS <b>119.45</b>	GULFPORT APP CON * <b>127.5 254.25</b>	GULFPORT TOWER * <b>123.7 (CTAF) 339.8</b>	GND CON <b>120.4 348.6</b>	UNICOM <b>122.95</b>
-----------------------	---	---	-------------------------------	-------------------------



ELEV 28	TDZE 27				
700	2000	GPT R-245	MUDDA	HOTIP GPT 6	Remain within 15 NM
		VGSi and descent angles not coincident (VGSi Angle 3.00/TCH 72).			
CATEGORY	A	B	C	D	E
S-32	440/40 413 (500-½)				
CIRCLING	520-1 492 (500-1)	640-1 612 (700-1)	760-2 732 (800-2)	760-2½ 732 (800-2½)	760-2½ 732 (800-2½)

SC-4, 03 OCT 2024 to 31 OCT 2024

SC-4, 03 OCT 2024 to 31 OCT 2024