

WAAS CH <b>86214</b> <b>W02A</b>	APP CRS <b>019°</b>	Rwy Idg TDZE Apt Elev	<b>7003</b> <b>1265</b> <b>1268</b>
--	------------------------	-----------------------------	---

# RNAV (GPS) RWY 2

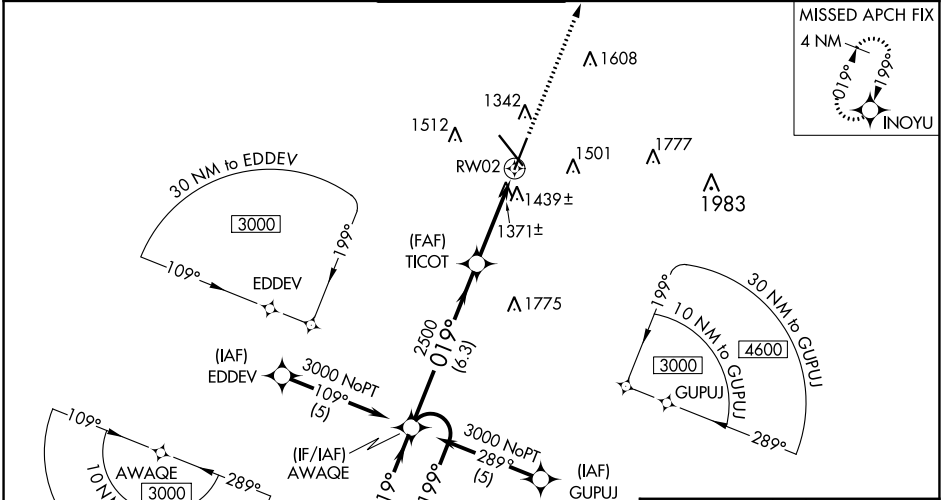
SPRINGFIELD-BRANSON NTL (SGF)

**⚠** DME/DME RNP -0.3 NA. For uncompensated Baro-VNAV systems, LNAV/VNAV NA below -17°C (2°F) or above 45°C (113°F). Baro-VNAV and VDP NA when using Monett altimeter setting. For inoperative MALSRS, increase LNAV Cat A and B visibility to RVR 5000. When local altimeter setting not received, use Monett altimeter setting and increase all DAs 90 feet and all MDAs 100 feet, increase LPV visibility all Cats to RVR 5000, LNAV/VNAV visibility all Cats to 1½ miles, LNAV visibility Cat C to RVR 5000 and Cat D to RVR 6000, and increase visibility Circling Cat C to 1¾ miles, and Cat D to 2 miles. For inoperative MALSRS, when using Monett altimeter setting, increase LPV visibility all Cats to 1½, LNAV Cat A and B visibility to RVR 5000.

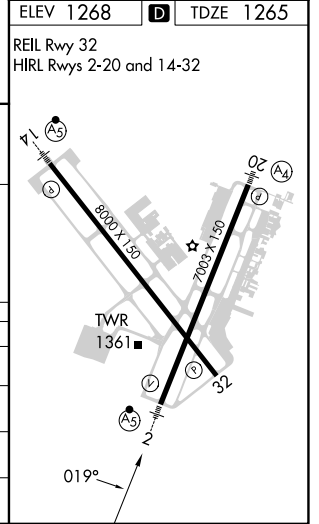
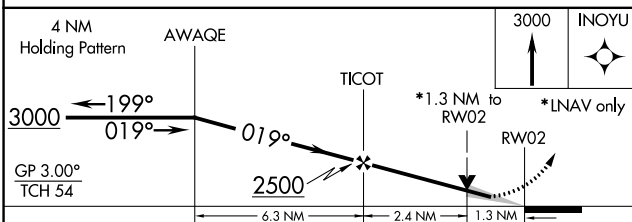
MALSRS

MISSED APPROACH: Climb to 3000 direct INOYU and hold.

ATIS <b>135.125</b>	SPRINGFIELD APP CON <b>124.95 290.5</b>	SPRINGFIELD TOWER <b>119.9 257.8</b>	GND CON <b>121.9 251.15</b>	CLNC DEL <b>123.675</b>
------------------------	--	---	--------------------------------	----------------------------



ELEV 1268	<b>D</b> TDZE 1265
REIL Rwy 32	HIRL Rwys 2-20 and 14-32



CATEGORY	A	B	C	D
LPV DA	1590/40		325 (400-¾)	
LNAV/VNAV DA	1754/60		489 (500-1¼)	
LNAV MDA	1720/40		455 (500-¾)	
	1720/50		455 (500-1)	
<b>C</b> CIRCLING	1760-1	1820-1	1820-1½	1920-2
	492 (500-1)	552 (600-1)	552 (600-1½)	652 (700-2)

NC-3, 03 OCT 2024 to 31 OCT 2024

NC-3, 03 OCT 2024 to 31 OCT 2024