

WAAS CH 72933 W32A	APP CRS 319°	Rwy Idg TDZE Apt Elev	8000 1268 1268
--	------------------------	-----------------------------	---

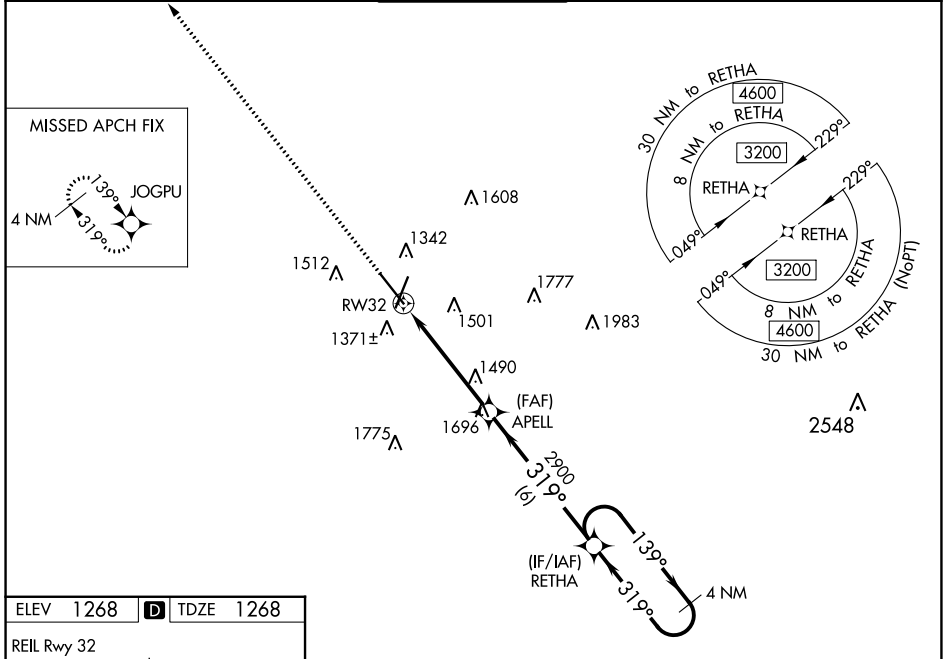
RNAV (GPS) RWY 32

SPRINGFIELD-BRANSON NTL (SGF)

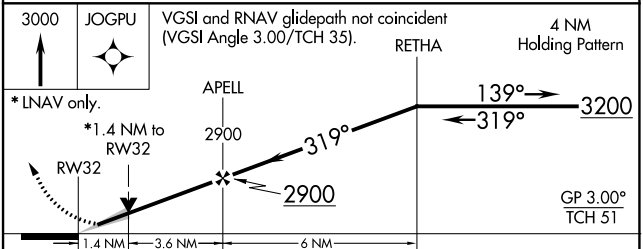
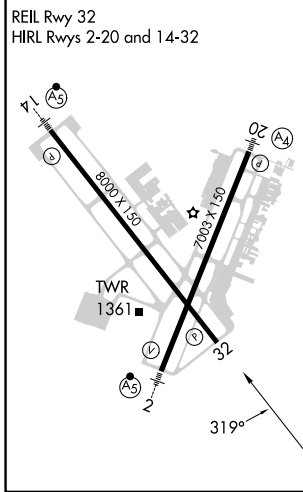
⚠ Baro-VNAV and VDP NA when using Monett altimeter setting. For uncompensated Baro-VNAV systems, LNAV/VNAV NA below -16°C (4°F) or above 54°C (130°F). When local altimeter setting not received, use Monett altimeter setting and increase all DA 90 feet and all MDA 100 feet; increase LPV all Cats visibility 1/8 mile, LNAV/VNAV all Cats 3/8 mile, LNAV Cats C and D 1/4 mile and Circling Cat C 1/4 mile and Cat D 1/2 mile. DME/DME RNP-0.3 NA.

MISSED APPROACH:
Climb to 3000 direct JOGPU and hold.

ATIS 135.125	SPRINGFIELD APP CON 124.95 290.5	SPRINGFIELD TOWER 119.9 257.8	GND CON 121.9 251.15	CLNC DEL 123.675
------------------------	--	---	--------------------------------	----------------------------



ELEV 1268	D	TDZE 1268
-----------	----------	-----------



CATEGORY	A	B	C	D	
LPV	DA	1518-1	250 (300-1)		
LNAV/VNAV	DA	1660-1 1/4	392 (400-1 1/4)		
LNAV	MDA	1740-1	472 (500-1)	1740-1 3/8	472 (500-1 3/8)
C CIRCLING		1760-1	1820-1	1820-1 1/2	1920-2
		492 (500-1)	552 (600-1)	552 (600-1 1/2)	652 (700-2)

NC-3, 03 OCT 2024 to 31 OCT 2024

NC-3, 03 OCT 2024 to 31 OCT 2024