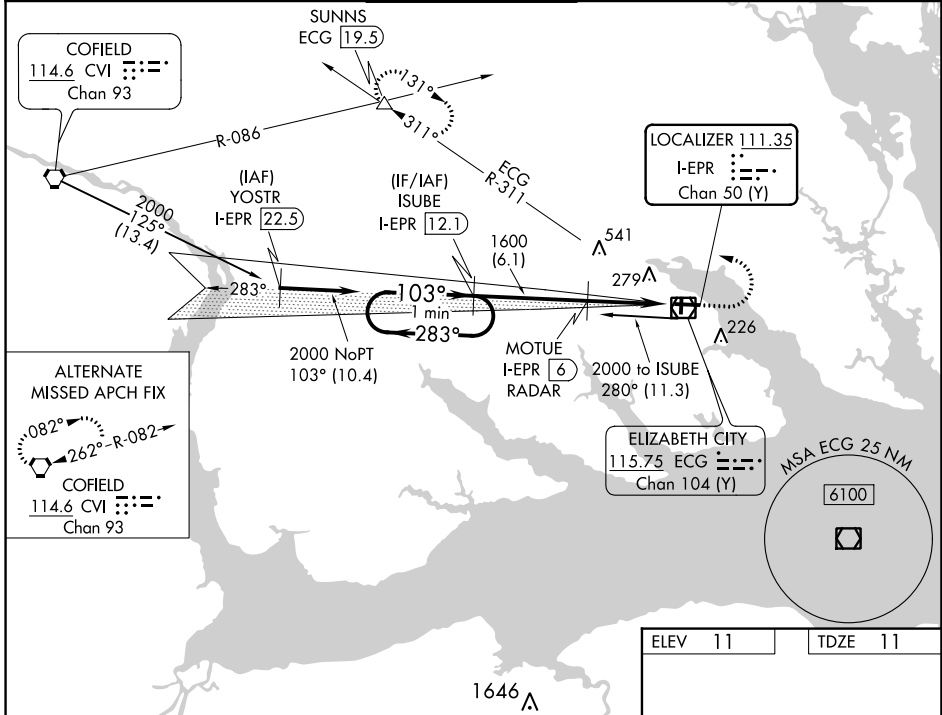


LOC/DME I-EPR <b>111.35</b> Chan <b>50 (Y)</b>	APP CRS <b>103°</b>	Rwy Idg <b>7219</b> TDZE <b>11</b> Apt Elev <b>11</b>
--	------------------------	---

# ILS or LOC RWY 10

ELIZABETH CITY CG AIR STATION/RGNL (ECG)

DME required.		SALS	MISSED APPROACH: Climb to 500 then climbing left turn to 3000 on heading 281° and ECG VOR/DME R-311 to SUNNS INT/ECG 19.5 DME and hold.	
ASOS <b>124.375</b>	NORFOLK APP CON <b>119.55 269.425</b>	ELIZABETH CITY TOWER ★ <b>120.5 (CTAF) 355.6</b>	GND CON <b>121.9</b>	UNICOM <b>122.95</b>

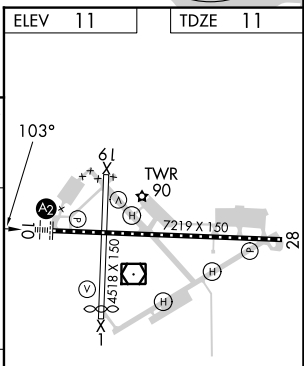
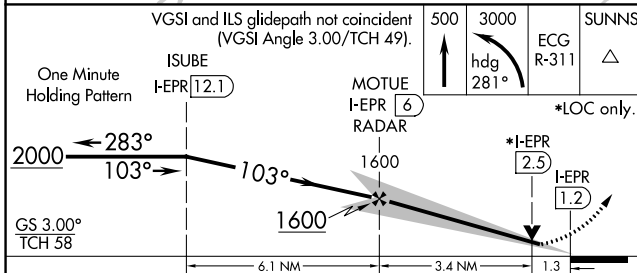


ALTERNATE MISSED APCH FIX

ELIZABETH CITY 115.75 ECG Chan 104 (Y)

MSA ECG 25 NM

6100



CATEGORY	A	B	C	D
S-ILS 10	261-3/4		250 (300-3/4)	
S-LOC 10	460-1 449 (500-1)		460-13/8 449 (500-13/8)	
CIRCLING	480-1 469 (500-1)		640-13/8 629 (700-13/8) 640-2 629 (700-2)	

ELEV	11	TDZE	11
MRL Rwy 1-19 HIRL Rwy 10-28 REIL Rwys 10 and 28			
FAF to MAP 4.7 NM			
Knots	60	90	120 150 180
Min:Sec	4:42	3:08	2:21 1:53 1:34

SE-2, 03 OCT 2024 to 31 OCT 2024

SE-2, 03 OCT 2024 to 31 OCT 2024