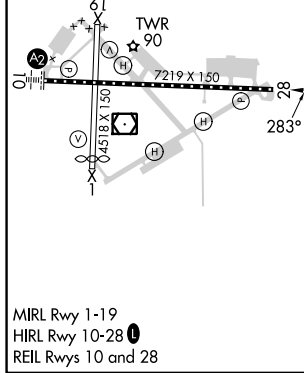
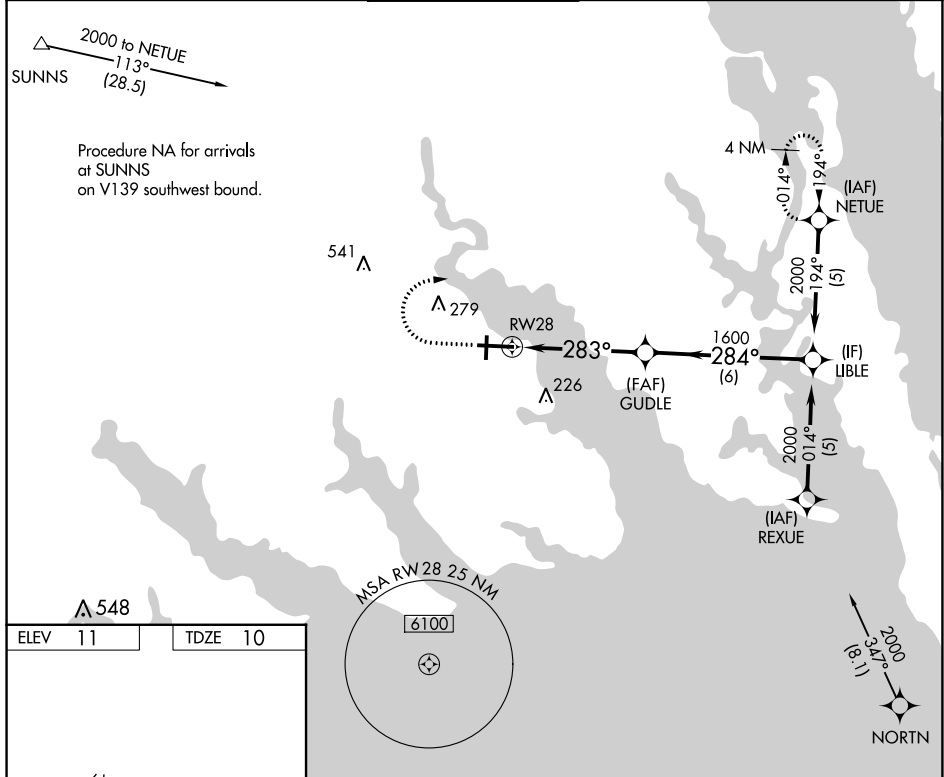


| | | |
|-------------|----------|-------------|
| APP CRS | Rwy Idg | 7219 |
| 283° | TDZE | 10 |
| | Apt Elev | 11 |

RNAV (GPS) RWY 28

ELIZABETH CITY CG AIR STATION/RGNL (ECG)

| | | | | | |
|----------------|-----------------------|---|--------------|--|--|
| RNP APCH. | | <p>▼ Rwy 28 helicopter visibility reduction below $\frac{3}{4}$ SM NA. Procedure NA when tethered balloon located approximately 2 miles southeast of airport is flying.</p> | | <p>MISSED APPROACH: Climb to 800 then climbing right turn to 2000 direct NETUE and hold.</p> | |
| ASOS | NORFOLK APP CON | ELIZABETH CITY TOWER★ | GND CON | UNICOM | |
| 124.375 | 119.55 269.425 | 120.5 (CTAF) 355.6 | 121.9 | 122.95 | |



| | | | | |
|-------------------|--------|-------------|---|----------------------------|
| | 800 | 2000 | NETUE | |
| | ↑ | ↷ | ✧ | |
| | RWY 28 | | GUDLE | LIBLE |
| | 283° | | 284° | 2000 |
| | 4.8 NM | | 6 NM | |
| CATEGORY | A | B | C | D |
| LNAV MDA | 460-1 | 450 (500-1) | 460-1 $\frac{3}{8}$ | 450 (500-1 $\frac{3}{8}$) |
| ☐ CIRCLING | 480-1 | 469 (500-1) | 640-1 $\frac{3}{4}$ 629 (700-1 $\frac{3}{4}$) | 640-2 629 (700-2) |

SE-2, 03 OCT 2024 to 31 OCT 2024

SE-2, 03 OCT 2024 to 31 OCT 2024