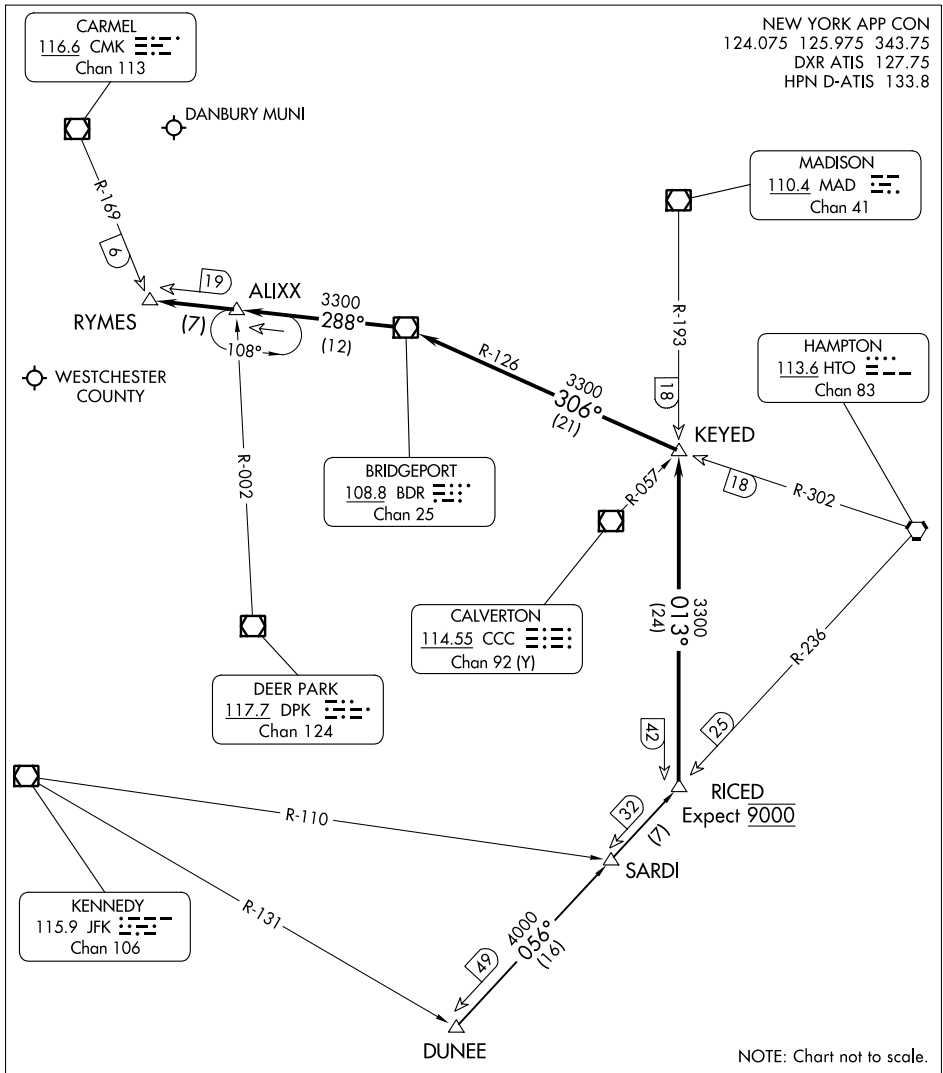


# RICED FOUR ARRIVAL

WHITE PLAINS, NEW YORK

NEW YORK APP CON  
 124.075 125.975 343.75  
 DXR ATIS 127.75  
 HPN D-ATIS 133.8



NE-2, 03 OCT 2024 to 31 OCT 2024

NE-2, 03 OCT 2024 to 31 OCT 2024

NOTE: Chart not to scale.

### ARRIVAL ROUTE DESCRIPTION

**DUNEE TRANSITION (DUNEE.RICED4):** From over DUNEE INT via HTO R-236 to RICED INT, thence. . . .

. . . .from over RICED INT via MAD R-193 to intercept BDR R-126 to BDR VOR/DME then via BDR R-288 to RYMES INT. Expect RADAR vectors to final approach course.

# RICED FOUR ARRIVAL

WHITE PLAINS, NEW YORK