

APP CRS	Rwy Idg	5000
177°	TDZE	327
	Apt Elev	328

RNAV (GPS) RWY 19

FLOYD BENNETT MEML (GFL)

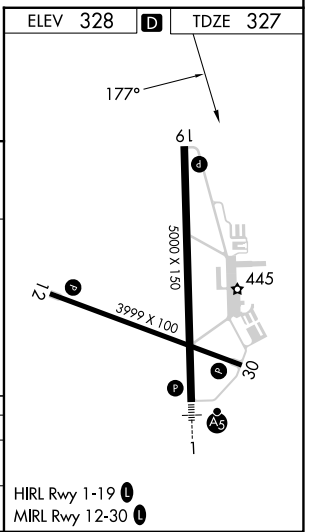
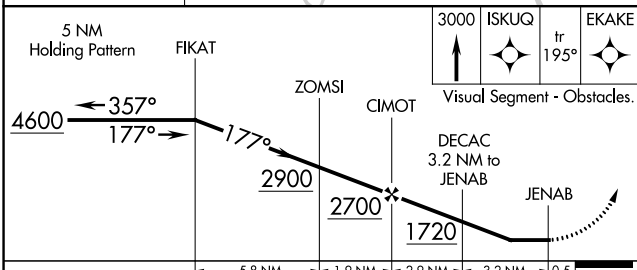
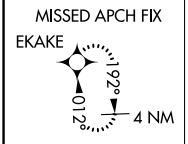
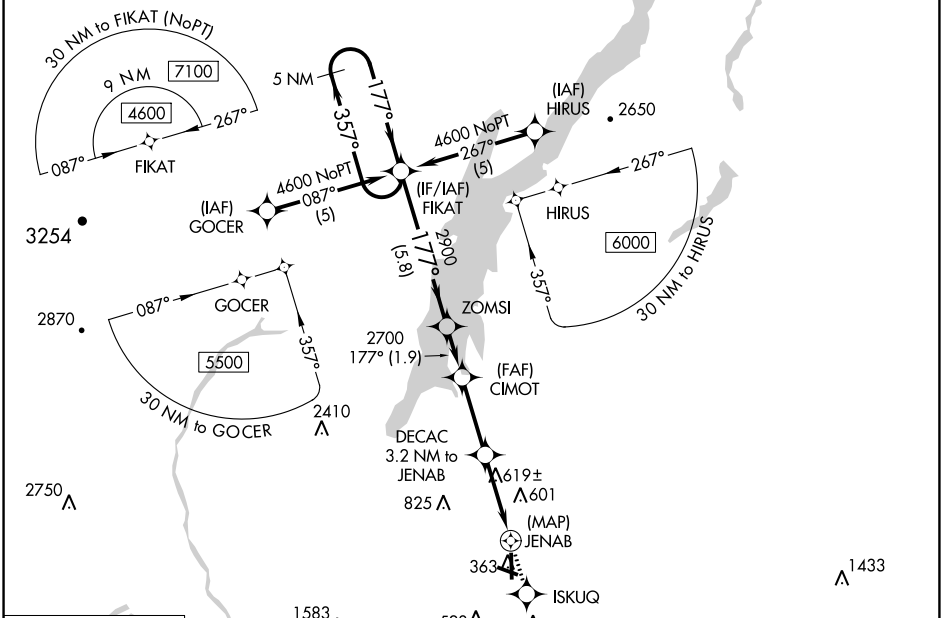
RNP APCH.

⚠ Circling NA for Cat D NW of Rwy 12 and 19. Rwy 19 helicopter visibility reduction below 3/4 SM NA. Circling Rwy 12, 30 NA at night.

⚠ MISSED APPROACH: Climb to 3000 direct ISKUQ and on track 195° to EKAKE and hold.

⚠ -19°C

ASOS 119.925	ALBANY APP CON 132.825 307.2	UNICOM 123.0 (CTAF) 0
------------------------	--	---------------------------------



CATEGORY	A	B	C	D
LNVA MDA	880-1	553 (600-1)	880-1 1/2 553 (600-1 1/2)	880-1 1/4 553 (600-1 1/4)
C CIRCLING	880-1	552 (600-1)	940-1 1/4 612 (700-1 1/4)	1420-3 1092 (1100-3)

NE-2, 03 OCT 2024 to 31 OCT 2024

NE-2, 03 OCT 2024 to 31 OCT 2024