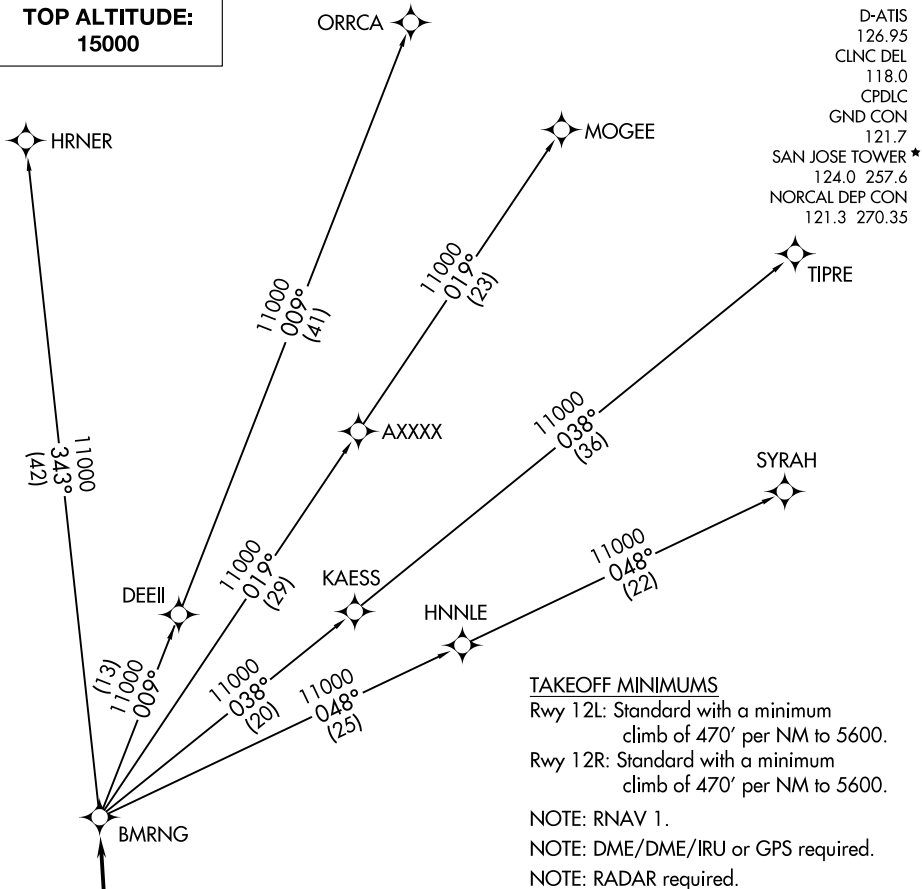


# BMRNG FOUR DEPARTURE (RNAV)

**TOP ALTITUDE:  
15000**



SW-2, 03 OCT 2024 to 31 OCT 2024

SW-2, 03 OCT 2024 to 31 OCT 2024



## DEPARTURE ROUTE DESCRIPTION

TAKEOFF RUNWAYS 12L/R: Climb heading 126° or as assigned by ATC, expect RADAR vectors to cross GRRIF at or above 13000, then on track 343° to BMRNG, thence . . . .  
. . . . on (transition). Maintain 15000. Expect filed altitude 10 minutes after departure.

HRNER TRANSITION (BMRNG4.HRNER)

MOGEE TRANSITION (BMRNG4.MOGEE)

ORRCA TRANSITION (BMRNG4.ORRCA)

SYRAH TRANSITION (BMRNG4.SYRAH)

TIPRE TRANSITION (BMRNG4.TIPRE)

NOTE: Chart not to scale.

# BMRNG FOUR DEPARTURE (RNAV)