

APP CRS	Rwy Idg	7597
306°	TDZE	55
	Apt Elev	62

RNAV (RNP) Z RWY 30R

NORMAN Y MINETA SAN JOSE INTL (SJC)

RNP AR APCH.	MISSED APPROACH: Climb to 600 then climb to 2000 direct ARTAQ and hold.
▼ For uncompensated Baro-VNAV systems, procedure NA below 1°C or above 54°C.	

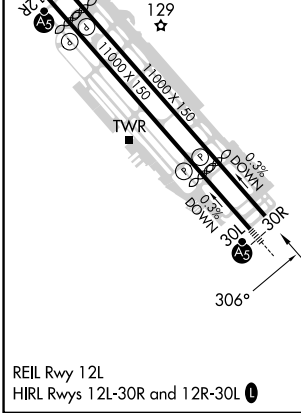
D-ATIS	NORCAL APP CON	SAN JOSE TOWER ★	GND CON	CLNC DEL	CPDLC	UNICOM
126.95	120.1 290.25	124.0 (CTAF) 0 257.6	121.7	118.0		122.95



SW-2, 03 OCT 2024 to 31 OCT 2024

SW-2, 03 OCT 2024 to 31 OCT 2024

ELEV 62	D	TDZE 55
---------	----------	---------



600	2000	ARTAQ	VGSi and RNP glidepath not coincident (VGSi Angle 3.00°/TCH 69°).	TUZGY
↑	↑	✦		1600
See planview for multiple IF locations.				
RWY 30R				GP 3.00° TCH 55

CATEGORY	A	B	C	D
RNP 0.11 DA		377-1	322 (400-1)	
RNP 0.20 DA		472-1½	417 (500-1½)	
RNP 0.30 DA		538-1¾	483 (500-1¾)	

REIL Rwy 12L
HIRL Rwy 12L-30R and 12R-30L

AUTHORIZATION REQUIRED