

WAAS CH <b>69501</b> <b>W12B</b>	APP CRS <b>126°</b>	Rwy Idg TDZE Apt Elev	<b>8831</b> <b>44</b> <b>62</b>
--	------------------------	-----------------------------	---------------------------------------

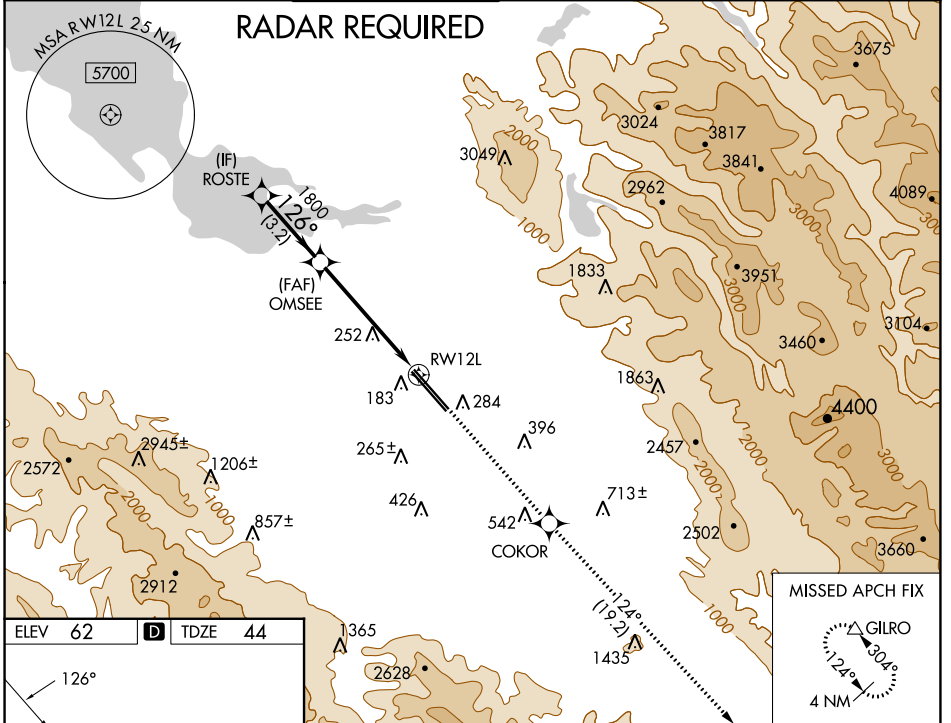
# RNAV (GPS) Y RWY 12L

NORMAN Y MINETA SAN JOSE INTL (SJC)

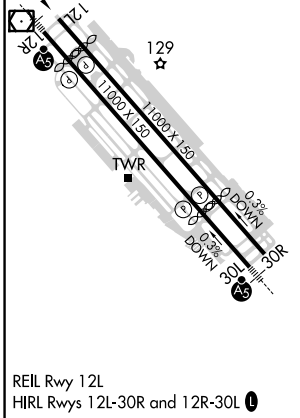
**▽** For uncompensated Baro-VNAV systems, LNAV/VNAV NA below -1°C (31°F) or above 54°C (130°F). DME/DME RNP-0.3 NA.

MISSED APPROACH: Climb to 4600 direct COKOR and on track 124° to GILRO and hold.

D-ATIS <b>126.95</b>	NORCAL APP CON <b>120.1 290.25</b>	SAN JOSE TOWER ★ <b>124.0 (CTAF) 0 257.6</b>	GND CON <b>121.7</b>	CLNC DEL <b>118.0</b>	CPDLC	UNICOM <b>122.95</b>
-------------------------	---------------------------------------	---	-------------------------	--------------------------	-------	-------------------------



ELEV 62	<b>D</b>	TDZE 44
---------	----------	---------



VGSI and RNAV glidepath not coincident (VGSI Angle 3.00/TCH 70).

ROSTE	OMSEE	4600	COKOR	GILRO
			↑	△
			Ir 124°	
				*LNAV only
GP 3.00° TCH 57	2300	1800	1800	
	126°			
			*1.3 NM to RWY 12L	
				RWY 12L
	3.2 NM	4.1 NM	1.3 NM	
CATEGORY	A	B	C	D
LPV	DA	294-3/4	250 (300-3/4)	
LNAV/VNAV	DA	341-1	297 (300-1)	
LNAV MDA	520-1	476 (500-1)	520-13/8	476 (500-13/8)