

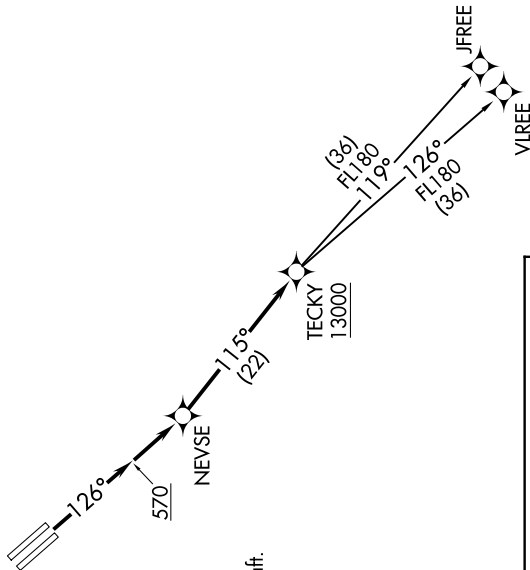
SW-2, 03 OCT 2024 to 31 OCT 2024

D-ATIS 126.95
CLNC DEL 118.0
CPDLC GND CON 121.7
SAN JOSE TOWER * 124.0 257.6
NORCAL DEP CON 121.3 270.35

TAKEOFF MINIMUMS

Rwys 12L/R: Standard with minimum climb of 500' per NM to 570.

**TOP ALTITUDE:
FL190**



NOTE: RNAV 1
NOTE: RADAR required for non-GPS equipped aircraft.
NOTE: DME/DME/IRU or GPS required.

DEPARTURE ROUTE DESCRIPTION

TAKEOFF RUNWAYS 12L, 12R: Climb on heading 126° to 570, then direct NEVSE, then on track 115° to cross TECKY at or above 13000, thence. . .

. . . on (transition). Maintain FL190. Expect filed altitude 10 minutes after departure.

JFREE TRANSITION (TECKY4.JFREE)
VFREE TRANSITION (TECKY4.VFREE)

NOTE: Chart not to scale.

SW-2, 03 OCT 2024 to 31 OCT 2024