

ILS Z or LOC Z RWY 18

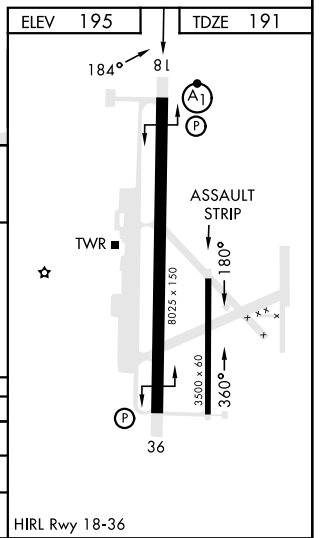
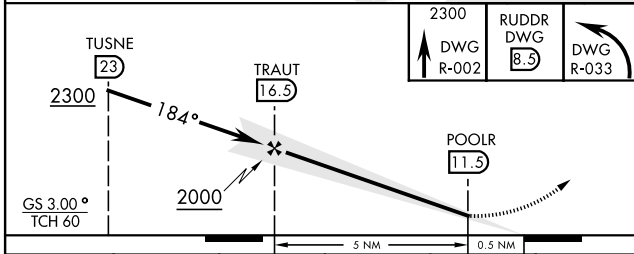
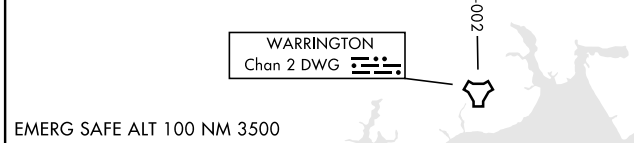
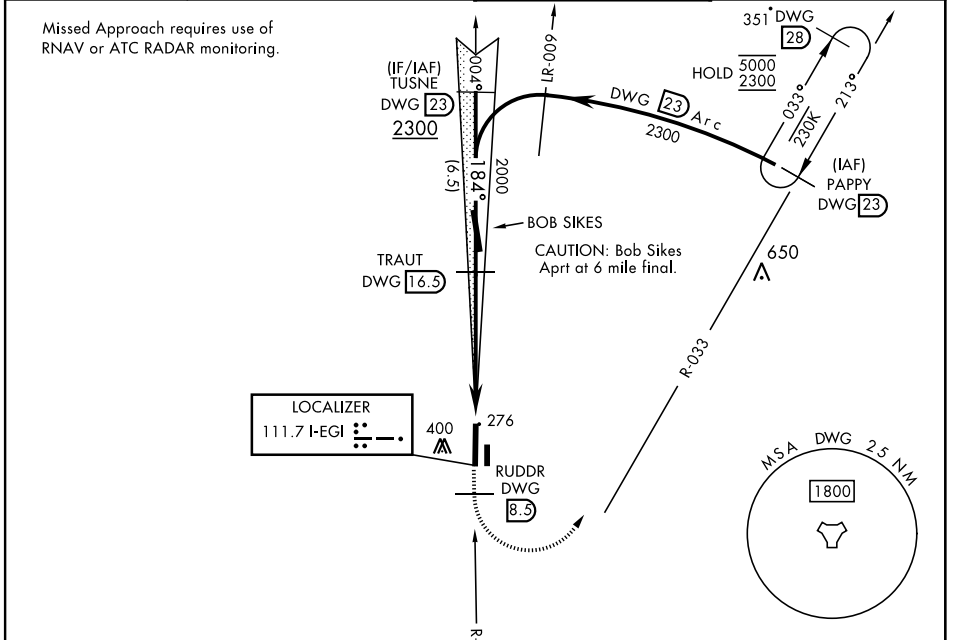
LOC I-EGI 111.7	APCH CRS 184°	Rwy Idg TDZE Arprt Elev 8025 191 195	AL-699 [USAF]	DUKE FLD (EGLIN AF AUX NR3) (KEGI)
---------------------------	-------------------------	--	---------------	------------------------------------

* When ALS inop, increase RVR to 40, vis to ¼ mile.
 ** When ALS inop, increase RVR to 55, vis to 1 mile.

ALSF-1 

MISSED APPROACH: Climb on DWG R-002 to 8.5 DME (RUDDR), then climbing left turn to 2300 intercept DWG R-033 to 23 DME (PAPPY) and hold.

ATIS * 244.575	EGLIN APP CON 125.1 281.45 (271° - 089°) 132.1 360.6 (090° - 270°)	TOWER * 133.2 290.425	GND CON 123.25 251.125
--------------------------	--	---------------------------------	----------------------------------



CATEGORY	A	B	C	D	E
S-ILS 18 *	391/24		200	(200-½)	
S-LOC 18 **	540/24	349 (400-½)	540/30	349 (400-¾)	
CIRCLING	660-1 465 (500-1)	700-1 505 (600-1)	700-1½ 505 (600-1½)	760-2 565 (600-2)	780-2 585 (600-2)

HIRL Rwy 18-36

ILS Z or LOC Z RWY 18

SE-3, 03 OCT 2024 to 31 OCT 2024

SE-3, 03 OCT 2024 to 31 OCT 2024