

TACAN Z RWY 18

TACAN DWG Chan 2	APCH CRS 183°	Rwy Idg TDZE Arprt Elev	8025 191 195
----------------------------	-------------------------	-------------------------------	-----------------------------------------

[USAF]

DUKE FLD (EGLIN AF AUX NR3) (KEGI)

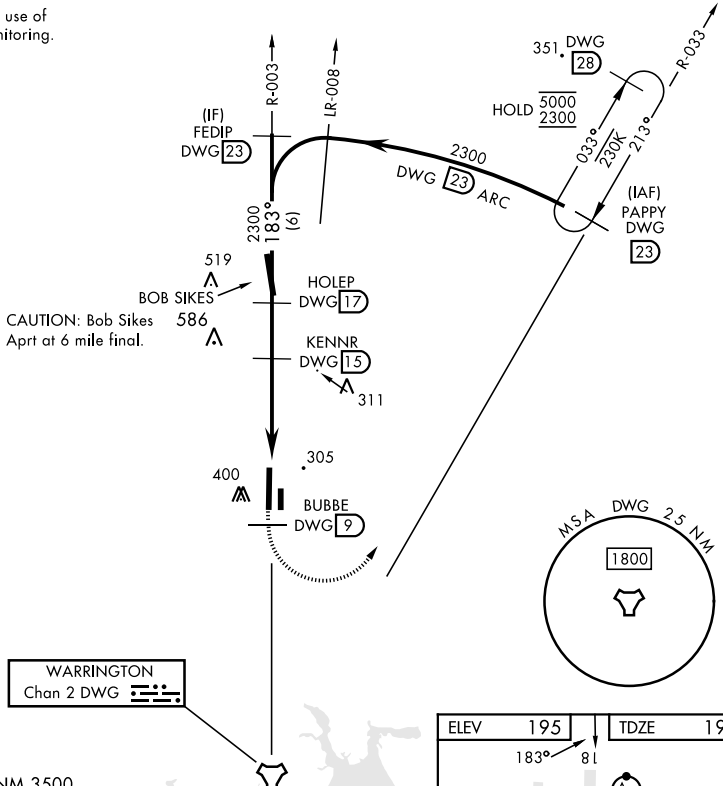
* When ALS inop, increase RVR to 55, vis to 1 mile.

ALSF-1 

MISSED APPROACH: Climb on DWG R-003 to 9 DME (BUBBE), then climbing left turn to 2300 direct DWG R-033/23 DME (PAPPY) and hold.

ATIS ★ 244.575	EGLIN APP CON 125.1 281.45 (271°-089°) 132.1 360.6 (090°-270°)	TOWER ★ 133.2 290.425	GND CON 123.25 251.125
--------------------------	------------------------------------------------------------------------------------	---------------------------------	----------------------------------

Missed Approach requires use of RNAV or ATC RADAR monitoring.

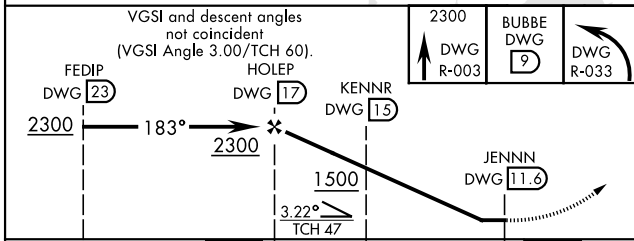


SE-3, 03 OCT 2024 to 31 OCT 2024

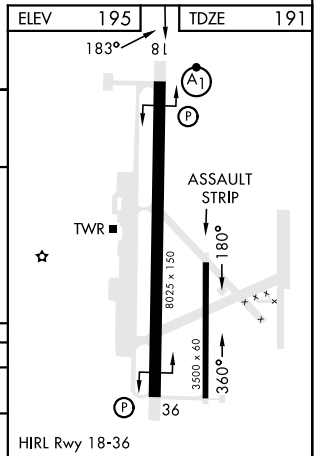
SE-3, 03 OCT 2024 to 31 OCT 2024

EMERG SAFE ALT 100 NM 3500

VGSI and descent angles not coincident (VGSI Angle 3.00/TCH 60).



CATEGORY	A	B	C	D	E
S-18*	560/24	369 (400-½)	560/35	369 (400-¾)	
CIRCLING	660-1 465 (500-1)	700-1 505 (600-1)	700-1½ 505 (600-1½)	760-2 565 (600-2)	780-2 585 (600-2)



TACAN Z RWY 18