

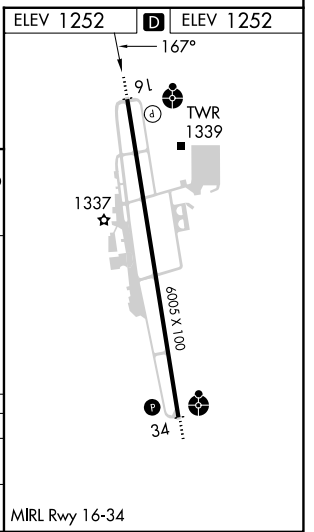
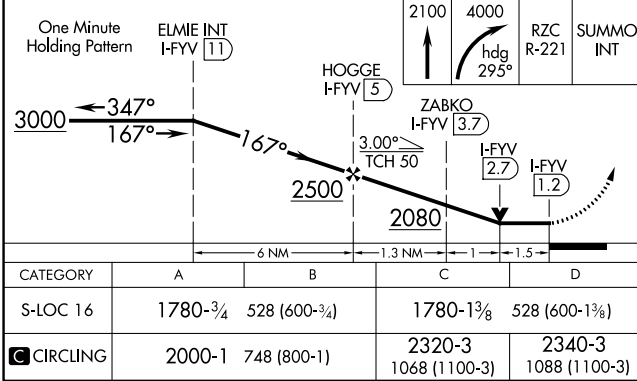
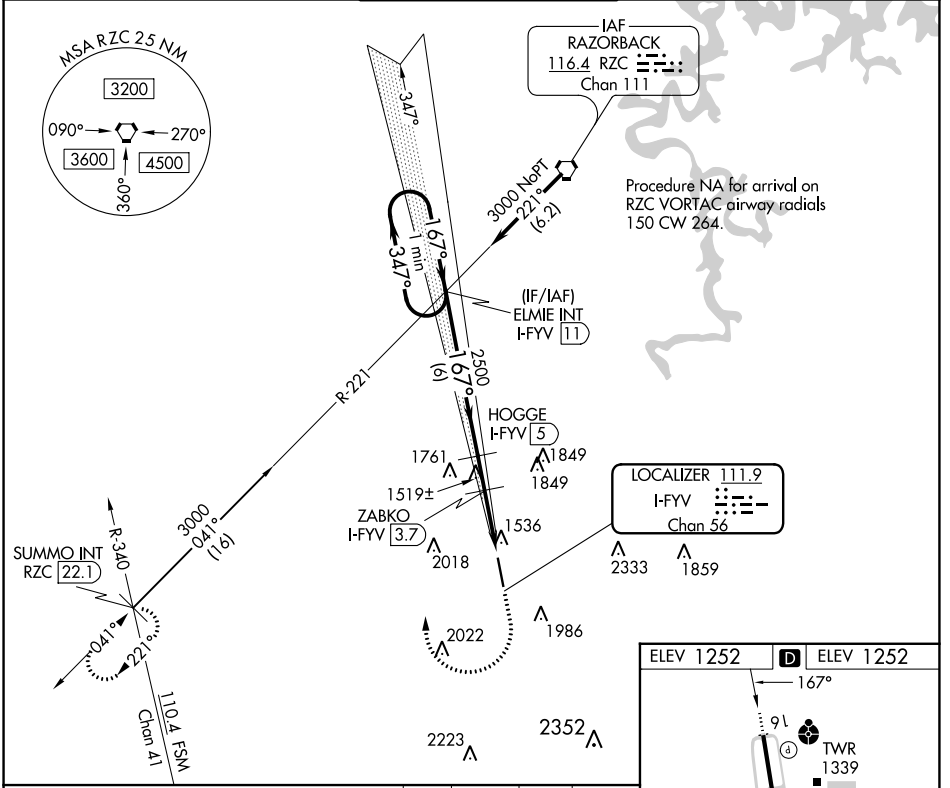
LOC/DME I-FYV 111.9 Chan 56	APP CRS 167°	Rwy Idg 6005 TDZE 1252 Apt Elev 1252
---	------------------------	---

LOC RWY 16

DRAKE FLD (FYV)

⚠ Circling NA east of Rwy 16-34. Rwy 16 helicopter visibility reduction below $\frac{3}{4}$ SM NA. DME required.	ODALS 	MISSED APPROACH: Climb to 2100 then climbing right turn to 4000 on heading 295° and RZC VORTAC R-221 to SUMMO INT/RZC 22.1 DME and hold.
---	------------------	---

ATIS 119.575	RAZORBACK APP CON* 121.0 244.575	DRAKE TOWER* 128.0 (CTAF) 371.9	GND CON 121.8	UNICOM 122.95
-------------------------------	---	--	--------------------------------	--------------------------------



CATEGORY	A	B	C	D
S-LOC 16	1780- $\frac{3}{4}$ 528 (600- $\frac{3}{4}$)		1780- $1\frac{3}{8}$ 528 (600- $1\frac{3}{8}$)	
C CIRCLING	2000-1 748 (800-1)		2320-3 1068 (1100-3)	2340-3 1088 (1100-3)

MRL Rwy 16-34

SC-1, 03 OCT 2024 to 31 OCT 2024

SC-1, 03 OCT 2024 to 31 OCT 2024