

| | | |
|--|------------------------|---|
| WAAS CH 50330 W34A | APP CRS 347° | Rwy Idg TDZE 1241 Apt Elev 1252 |
|--|------------------------|---|

RNAV (GPS) RWY 34

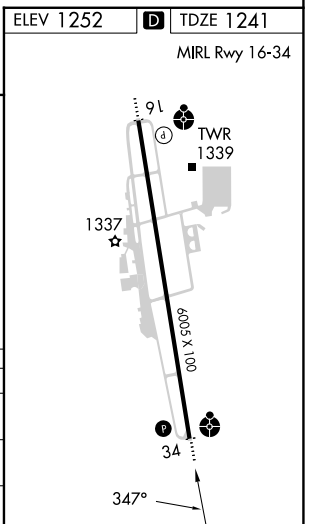
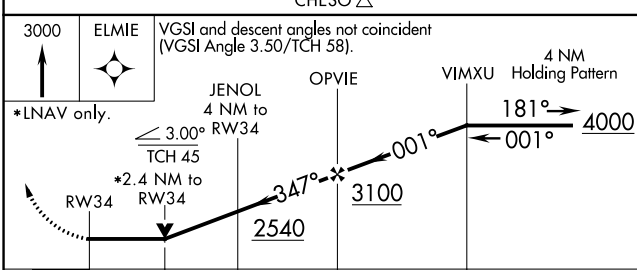
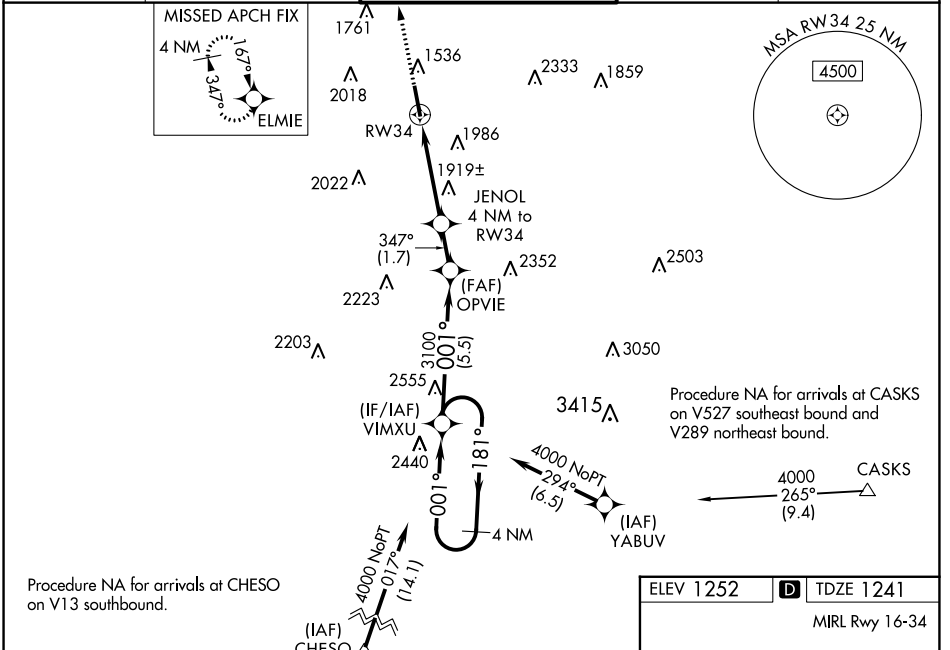
DRAKE FLD (FYV)

⚠ Inop table does not apply to LP Cat A and LP/LNAV Cat C and D. For inop ODALS when using Springdale altimeter setting, increase LNAV Cat C and D visibility to 3 miles. Circling NA east of Rwy 16-34. DME/DME RNP-0.3 NA. Helicopter visibility reduction below 3/4 SM NA. VDP NA with Springdale altimeter setting. When local altimeter setting not received, use Springdale altimeter setting and increase all MDA 40 feet. Increase LNAV Cat B and Circling Cat B and C visibility 1/4 mile.

ODALS

MISSED APPROACH: Climb to 3000 direct ELMIE and hold.

| | | | | |
|------------------------|--|--|-------------------------|-------------------------|
| ATIS 119.575 | RAZORBACK APP CON* 121.0 244.575 | DRAKE TOWER* 128.0(CTAF) 371.9 | GND CON 121.8 | UNICOM 122.95 |
|------------------------|--|--|-------------------------|-------------------------|



| CATEGORY | A | B | C | D |
|-------------------|---------|---------------|-------------------------|-------------------------|
| LP MDA | 2120-1 | 879 (900-1) | 2120-2½ | 879 (900-2½) |
| LNAV MDA | 2180-1 | 939 (1000-1) | 2180-2½ | 939 (1000-2½) |
| C CIRCLING | 2180-1¼ | 928 (1000-1¼) | 2320-3 1068 (1100-3) | 2340-3 1088 (1100-3) |

SC-1, 03 OCT 2024 to 31 OCT 2024

SC-1, 03 OCT 2024 to 31 OCT 2024