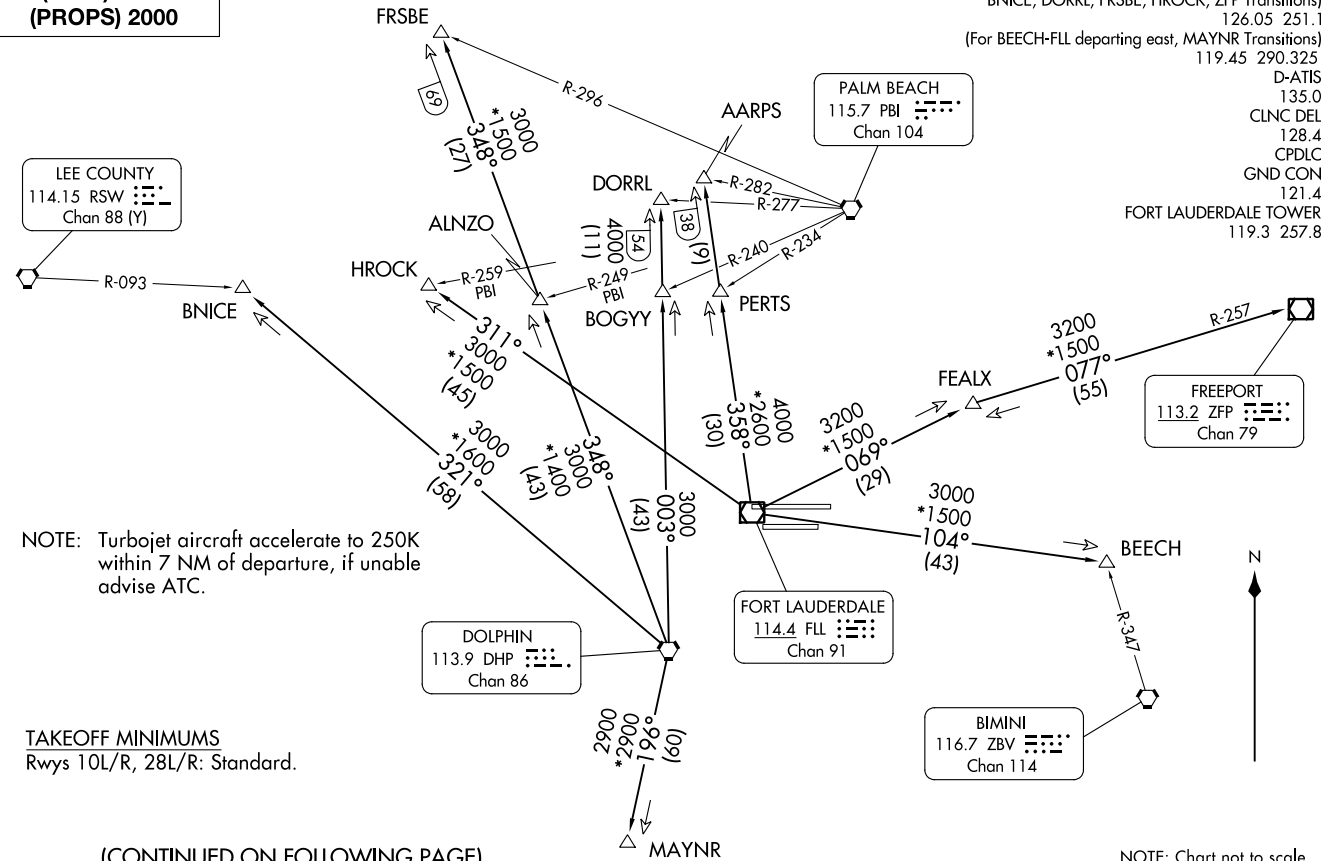


FORT LAUDERDALE ONE DEPARTURE (FLL) FLL 20APR23 FORT LAUDERDALE/HOLLYWOOD INTL (FLL)

TOP ALTITUDE:
(JETS) 4000
(PROPS) 2000

RADAR and DME required.



NOTE: Turbojet aircraft accelerate to 250K within 7 NM of departure, if unable advise ATC.

TAKEOFF MINIMUMS
Rwys 10L/R, 28L/R: Standard.

(CONTINUED ON FOLLOWING PAGE)

NOTE: Chart not to scale.

(FLL) FLL 24081 AL-744 (FAA) FORT LAUDERDALE/HOLLYWOOD INTL (FLL) FORT LAUDERDALE, FLORIDA

FORT LAUDERDALE ONE DEPARTURE



DEPARTURE ROUTE DESCRIPTION

TAKEOFF RUNWAY 10L: Climb on assigned heading, if assigned left turn, climb to 500 before turning left, thence. . . .

TAKEOFF RUNWAY 10R: Climb on assigned heading, thence. . . .

TAKEOFF RUNWAY 28L: Climb on assigned heading, if assigned left turn, climb to 700 before turning left, thence. . . .

TAKEOFF RUNWAY 28R: Climb on assigned heading, if assigned left turn, climb to 500 before turning left, thence. . . .

...PROPS maintain 2000, JETS maintain 4000 and expect RADAR vectors to appropriate transition. Expect further clearance to filed altitude ten (10) minutes after departure.

AARPS TRANSITION (FLL1.AARPS): From over FLL VOR/DME on FLL R-358 to AARPS.

BEECH TRANSITION (FLL1.BEECH): From over FLL VOR/DME on FLL R-104 to BEECH.

BNICE TRANSITION (FLL1.BNICE): From over DHP VORTAC on DHP R-321 to BNICE.

DORRL TRANSITION (FLL1.DORRL): From over DHP VORTAC on DHP R-003 to DORRL.

FEALX TRANSITION (FLL1.FEALX): From over FLL VOR/DME on FLL R-069 to FEALX.

FREEPORT TRANSITION (FLL1.ZFP): From over FLL VOR/DME on FLL R-069 to FEALX, then on ZFP R-257 to ZFP VOR/DME.

FRSBE TRANSITION (FLL1.FRSBE): From over DHP VORTAC on DHP R-348 to FRSBE.

HROCK TRANSITION (FLL1.HROCK): From over FLL VOR/DME on FLL R-311 to HROCK.

MAYNR TRANSITION (FLL1.MAYNR): From over DHP VORTAC on DHP R-196 to MAYNR.

SE-3, 03 OCT 2024 to 31 OCT 2024

SE-3, 03 OCT 2024 to 31 OCT 2024